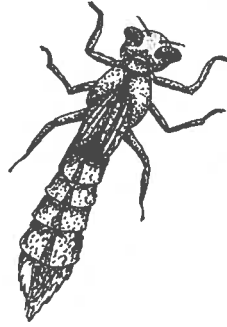


WETLAND INVERTEBRATES

Dragonfly Nymph

Brown in colour, it usually walks slowly on the bottom or among the vegetation. Eats plankton, worms and insects. About this long



Caddisfly Larva

Builds a tubular home using bits of plants, sand grains or even old snail shells. Walks slowly along the bottom and eats algae and small aquatic animals. About this long



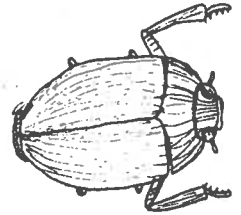
Giant Water Bug

A large, flat, brown bug usually found among plants. Swims by kicking its hind legs. Eats a variety of aquatic animals. This drawing is about life size.



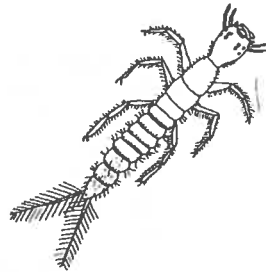
Whirligig Beetle

A small, shiny black beetle usually seen zooming around on the surface of the water. Feeds on small insects and is about this long



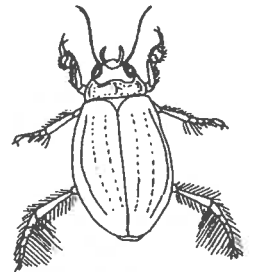
Predacious Diving Beetle (larva)

Also called a water tiger due to its voracious appetite for insects, minnows and tadpoles. Swims by 'dog paddling' with its legs. About this long



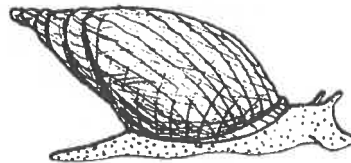
Predacious Diving Beetle (Adult)

A shiny black beetle sometimes marked with dull yellow or green. Swims by paddling with oar-like legs. Eats a variety of aquatic animals. About this long



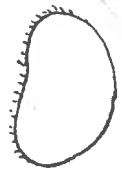
Snails

Move around slowly on a muscular foot that extends out of a spiral or orb shell. Use a rough 'tongue' to scrape up algae and dead plant material. Size varies



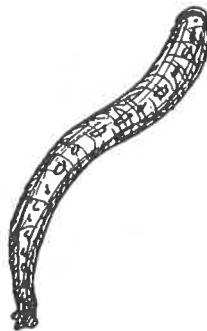
Seed Shrimp

A tiny clam-like animal that is greenish in colour and motors about using its legs and antennae. Filters bacteria and dead plant material out of the water. About the same size as the water flea.



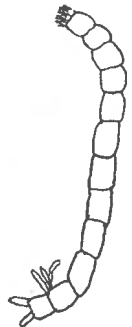
Leech

A flat-bodied, dark-coloured worm with a sucker at each end of its body. Moves along like an inchworm or swims in a ribbon-like fashion. Eats snails, insect larvae, worms and some suck blood. Size varies



Bloodworm

A dark red, segmented worm that spends its time moving about in the muck at the bottom of the marsh. Eats algae, tiny plants and other dead things on the bottom. About this long



Dragonfly Nymph

Brown in colour, it usually walks slowly on the bottom or among the vegetation. Eats plankton, worms and insects. About this long



Giant Water Bug

A large, flat, brown bug usually found among plants. Swims by kicking its hind legs. Eats a variety of aquatic animals. About 4.5 cm long.

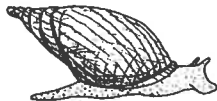


Predacious Diving Beetle (larva) Also called a water tiger due to its voracious appetite for insects, minnows and tadpoles. Swims by 'dog paddling' with its legs. About this long



Snails

Move around slowly on a muscular foot that extends out of a spiral or orb shell. Use a rough 'tongue' to scrape up algae and dead plant material. Size varies



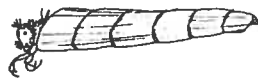
Leech

A flat-bodied, dark-coloured worm with a sucker at each end of its body. Moves along like an inchworm or swims in a ribbon-like fashion. Eats snails, insect larvae, worms and some suck blood. Size varies



Caddisfly Larva

Builds a tubular home using bits of plants, sand grains or even old snail shells. Walks slowly along the bottom and eats algae and small aquatic animals. About this long



Whirligig Beetle

A small, shiny black beetle usually seen zooming around on the surface of the water. Feeds on small insects and is about this long



Predacious Diving Beetle (Adult) A shiny black beetle sometimes marked with dull yellow or green. Swims by paddling with oar-like legs. Eats a variety of aquatic animals. About this long



Seed Shrimp

A tiny clam-like animal that is greenish in colour and motors about using its legs and antennae. Filters bacteria and dead plant material out of the water. About the same size as the water flea. \leftrightarrow



Bloodworm

A dark red, segmented worm that spends its time moving about in the muck at the bottom of the marsh. Eats algae, tiny plants and other dead things on the bottom. About this long



Water Flea

Pink or orange in colour, it moves up and down in short hops and feeds on algae and bacteria. About this long \leftrightarrow



Copepod

Often called 'Cyclops', due to its single eye spot. Moves with a constant, jerky, swimming motion, eats dead plants and animals and is very tiny.



Water Mite

Usually red, this tiny spider relative feeds on larvae and plankton and swims by wildly beating its 8 legs. About this long \leftrightarrow



Sideswimmer

A freshwater shrimp that is grayish in colour and swims on its side by beating its many legs. A scavenger about this long \leftrightarrow



Mosquito Larva

"Little black sticks" that float under the surface and feed on algae and protozoa. Wiggles wildly when disturbed. About this long \leftrightarrow



Mosquito Pupa

A tiny black "comma" floating just under the surface. It breathes through hollow tubes that stick out of the top of its head. About this long \leftrightarrow



Water Boatmen

Black with fine yellow bars, it swims by paddling with its oar-like legs. Eats algae and dead plants and animals. About this long \leftrightarrow



Phantom Midge Larva

Called a Phantom midge because this worm-like animal is transparent (see through). It moves by suddenly flicking its body. Eats plankton and is about this long \leftrightarrow



Backswimmer

Black and white in colour, with big red eyes. It swims along on its back by using its legs as oars. Preys on insects and small fish. About this long \leftrightarrow



Water Strider

With long skinny legs, it runs on the surface of the water and feeds on small insects. About this long \leftrightarrow



Damselfly Nymph

Usually found on the bottom or on underwater plants. Notice the 3 leaf-like gills on the end of its body. Eats insects and plankton. About this long \leftrightarrow



Mayfly Nymph

Similar to the damselfly nymph except that the projections at the end of its body are finer and more feather or hair-like. Eats algae and plant material. About this long \leftrightarrow

