

# History of Wetland Compensation in Riel Recreation Park in the City of St. Albert

**Presentation by:**

*Leah Kongsrude*

*Retired Executive Director*



# City of St. Albert



City of St. Albert

Big Lake  
Lois Hole Provincial  
Park

City of  
Edmonton

# City of St. Albert



Riel Recreation Park

Big Lake

# City of St. Albert

1924 Airphoto



- Established in 1861 along the Sturgeon River
- Oldest non-fortified community in Alberta
- St. Albert Trail
- CNR 1906

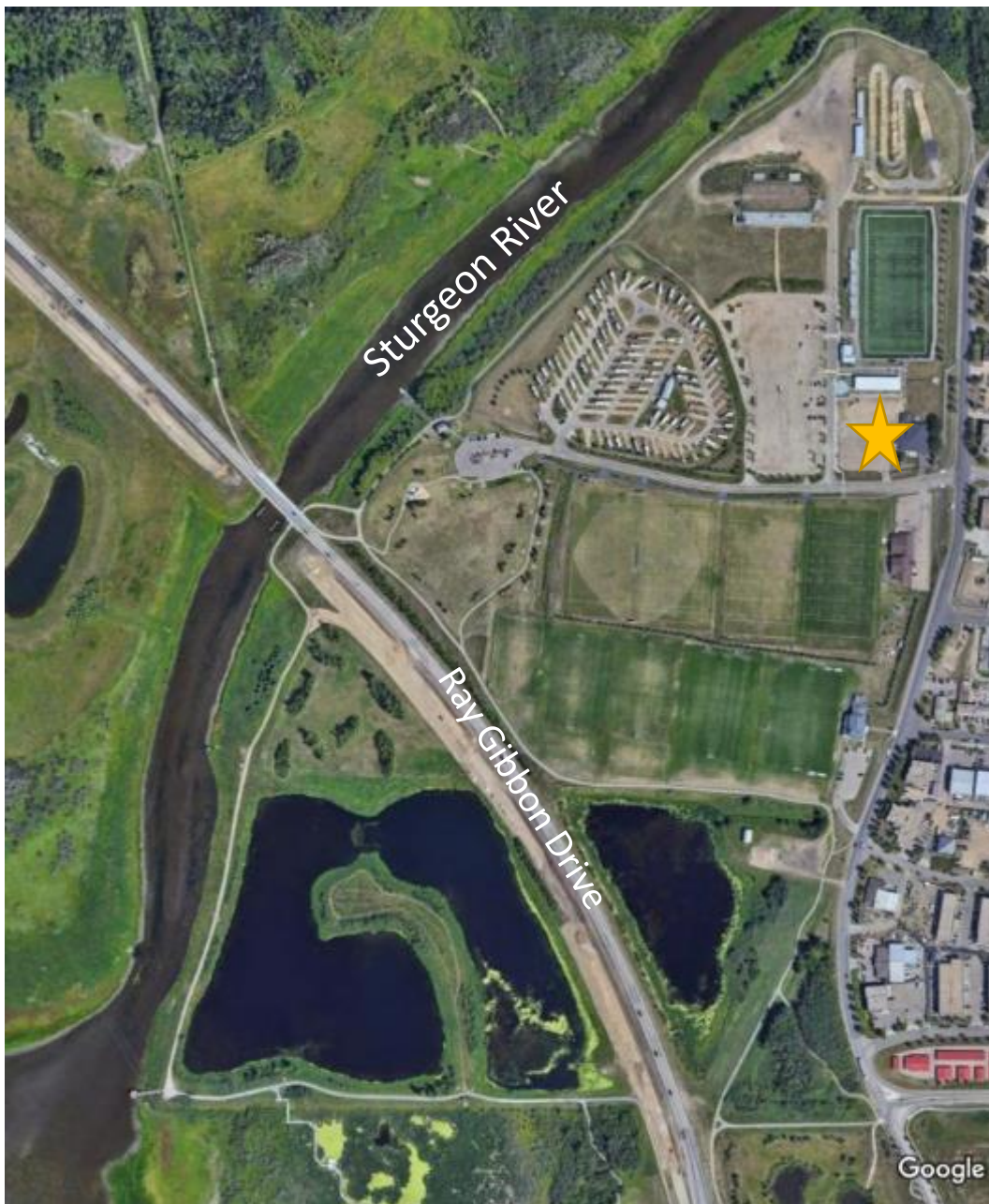


# City of St. Albert



- Father Lacombe Chapel 1861
- Chevigny Maison 1880
- Grain Elevators 1906 and 1929
- Little White School House 1948
- Founder's Walk





# Riel Recreation Park

- Olympic BMX Track
- Artificial Turf Football Field
- Rodeo and Fair Grounds
- RV Park
- Soccer and Rugby Fields
- Constructed Wetland
- John E. Poole Wetland Boardwalk



# Riel Sewage Lagoons



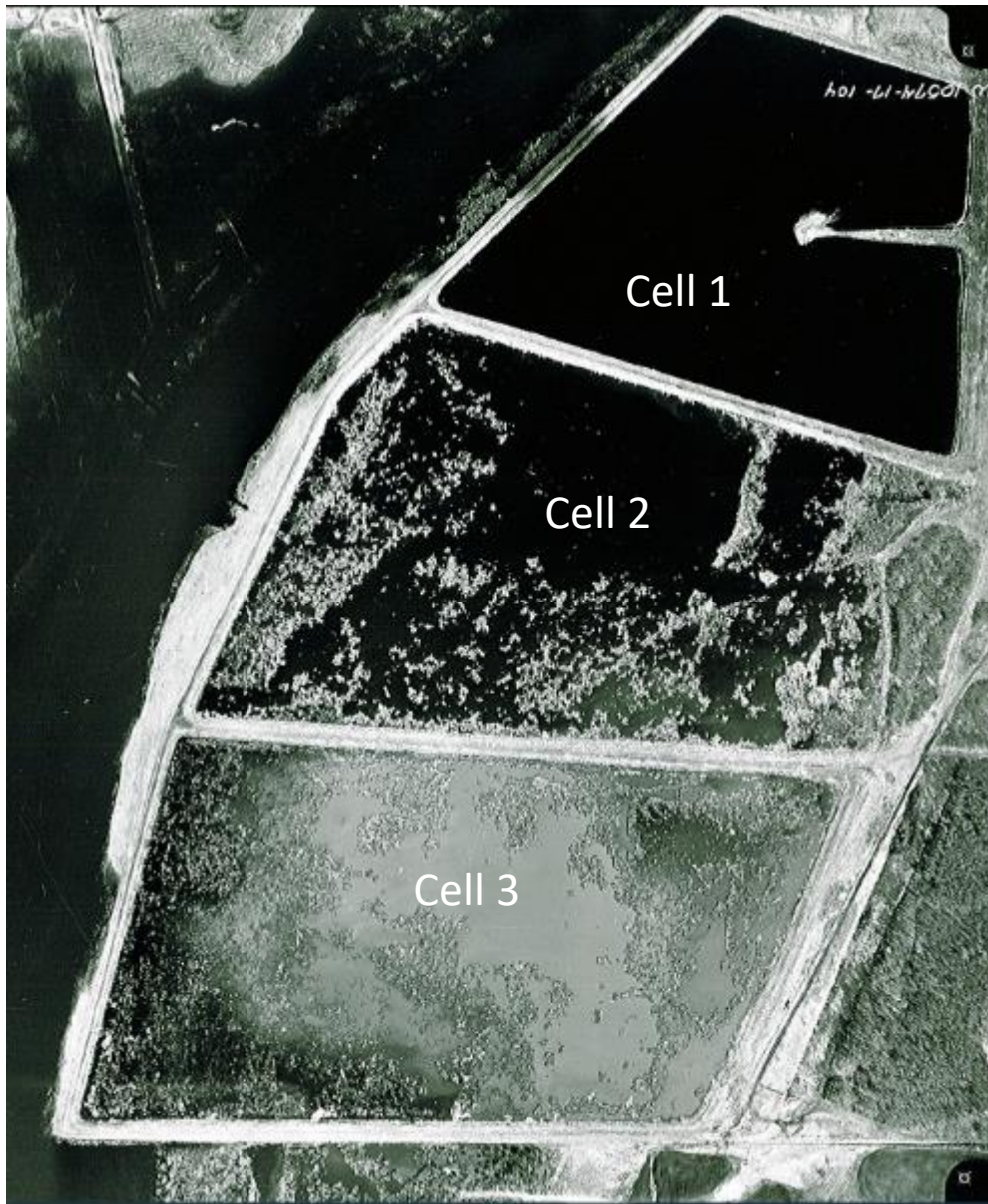
1965 Airphoto

- Low, flooded lands not suitable for farming
- 1920-1950 Nuisance Grounds
- 1950 Town Sewage Lagoons
- Cells 1 and 2 used to treat the town's sewage from 1950 - 1975



# Riel Sewage Lagoons

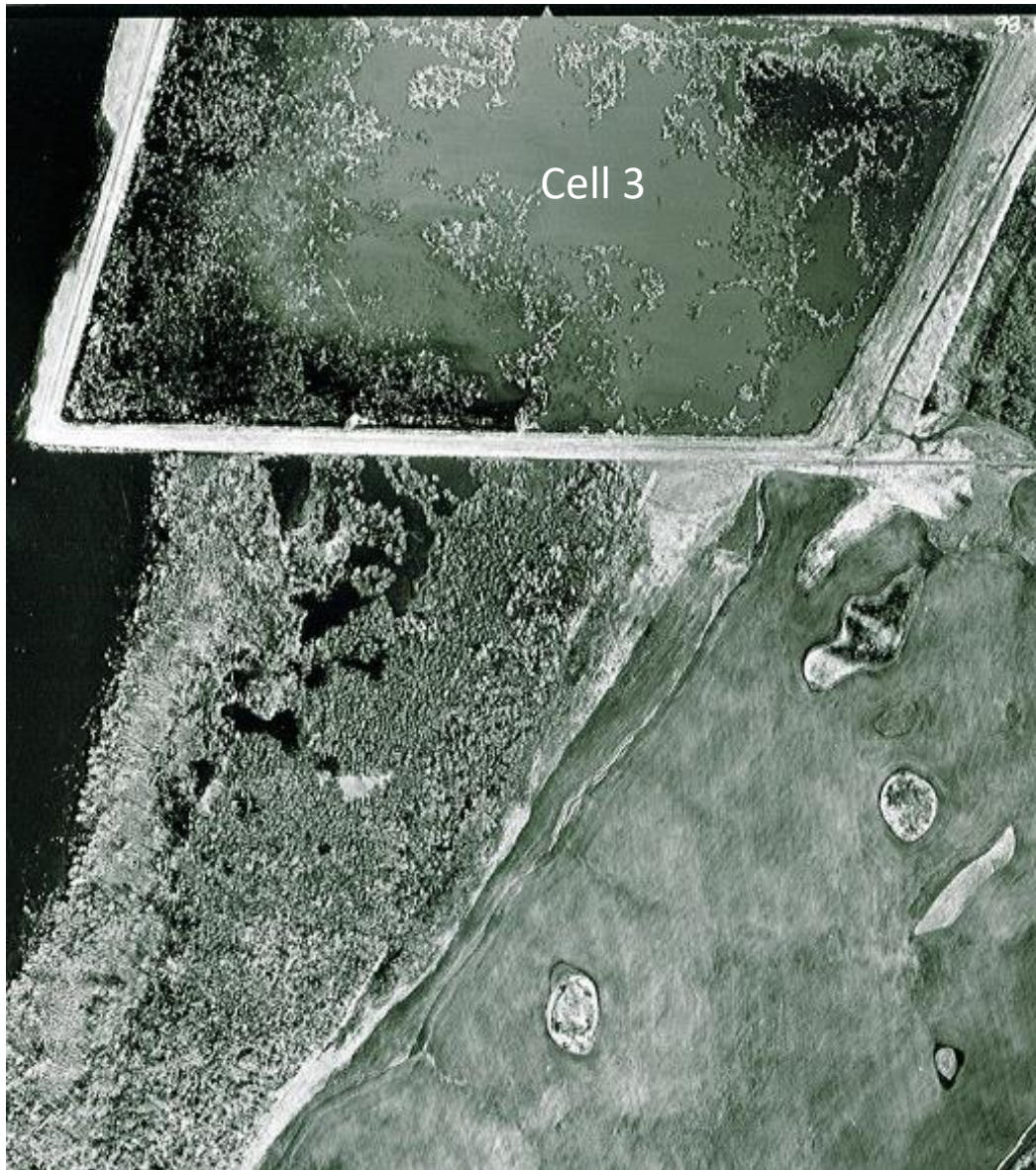
- Cell 3 constructed in 1960's but not used
- All three cells had outfalls to the Sturgeon River
- Late 1970's the Alberta Capital Region Wastewater Treatment Facility was constructed



1974 Airphoto







1974 Airphoto

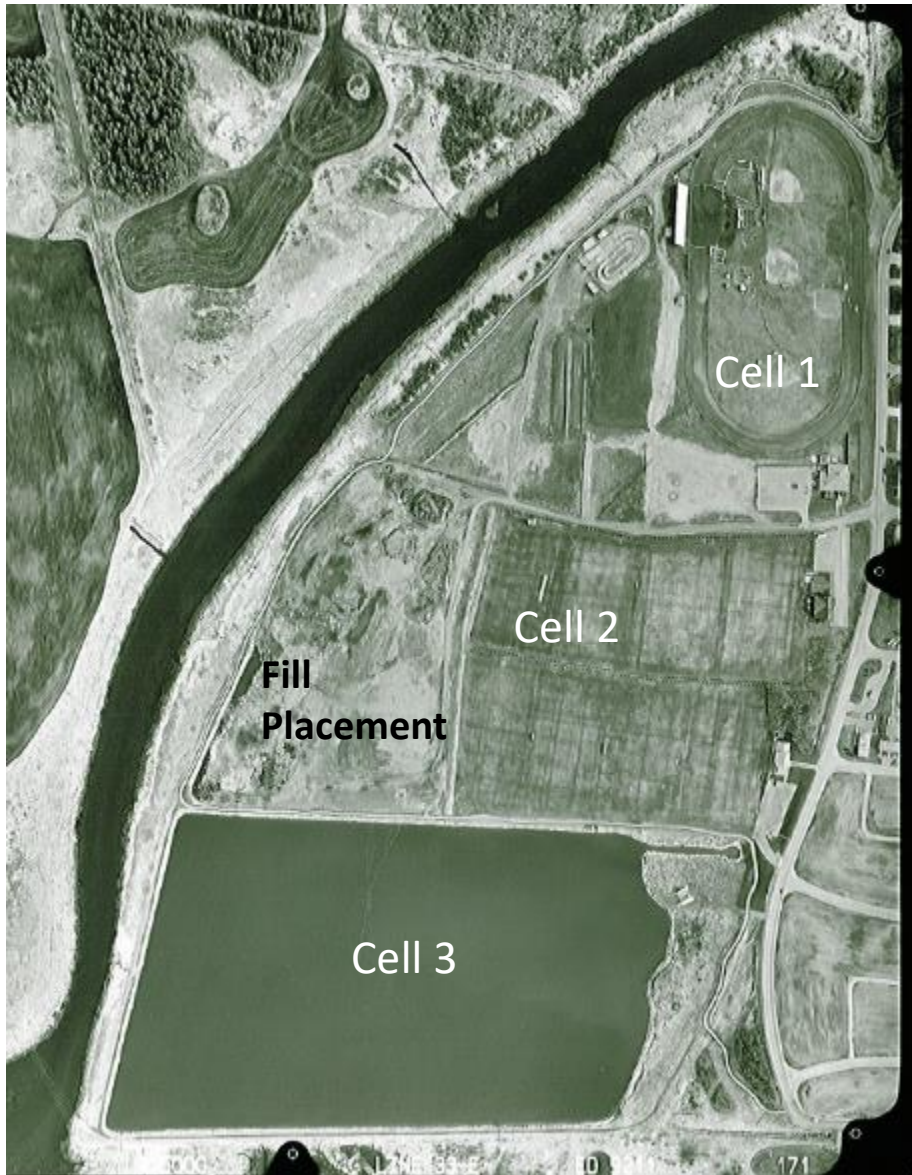
## Riel Marsh

- Natural wetland feature south of Cell 3
- Normal overland and groundwater flows restricted
- Drier conditions encouraged growth of poplar trees
- Loss of willow and cattails
- Limited open water



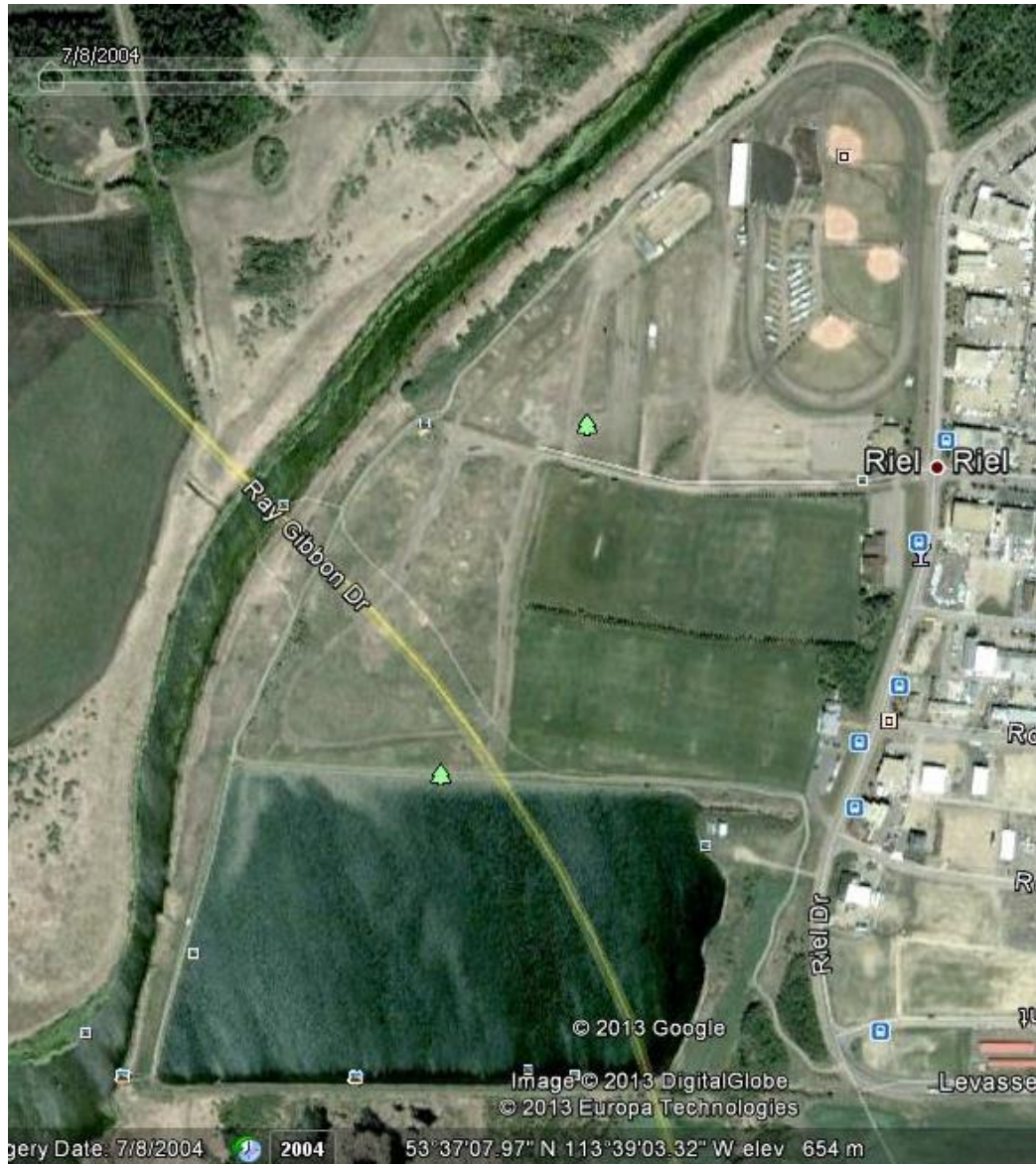
# Riel Recreation Park

- Cells 1 and 2 drained
- Used as dry landfill site from 1976 – 1986
- Area leveled and limited clay cap placed
- Leased to local groups for sports and recreation
- Rodeo grounds with baseball fields
- Rugby and Soccer Clubs
- Cell 3 connected to stormwater system



1994 Airphoto





2004 Airphoto

## Riel Recreation Park

- Area leveled and limited clay cap placed
- Cell 3 connected to stormwater system
- Proposed west regional road bypass 1995
- Environmental Impact Assessment 1995 - 2005
- Approval received in 2005





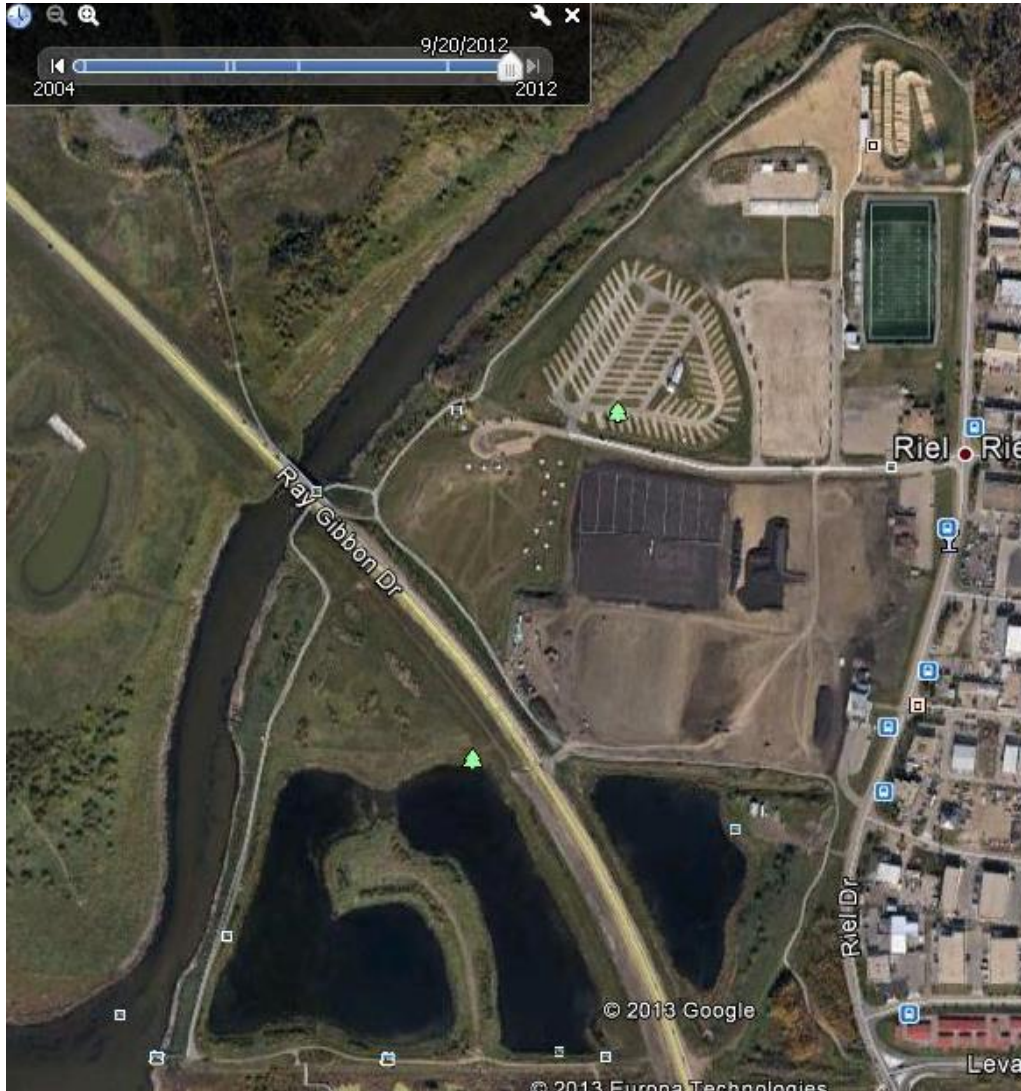
2008 Airphoto

## Riel Recreation Park

- Existing facilities removed
- 1.5 – 4.5 meter clay cap added
- Redeveloped in 5 phases to align with construction of Ray Gibbon Drive
- 2005- 2015
- Cell 3 reconstructed into stormwater pond and constructed wetland



# Riel Recreation Park



2012 Airphoto

- BMX Track
- Football Field
- Rodeo and exhibition grounds
- Expanded RV Park
- Soccer and Rugby Fields reconstructed
- Outlets from Constructed Wetland to Sturgeon River and Riel Marsh



# Riel Recreation Park

- Rotary Park
- Native vegetation landscaping
- Surface water management including irrigation of soccer and rugby fields
- Monitoring of all mitigation measures for 5 – 10 years
- Monitoring of landfill for next 50 – 100 years



2022 Airphoto



# Riel Constructed Wetland



2022 Airphoto

- Monitoring of Constructed Wetland and Riel Marsh for 5 Years
- Wetland biological functions and ecological trajectory
- Composition and quality of plant communities
- Wildlife function and populations



# John E. Poole Wetland Interpretive Boardwalk



2022 Airphoto

- Constructed by Ducks Unlimited in 2012
- Part of Lois Hole Centennial Provincial Park
- Parking and basic facilities accessible from Ray Gibbon Drive
- Long term plan for Lois Hole Park includes trails around Big Lake





*Thank you!*

