

**Appendix D - 2D Velocity Variation from Existing
Conditions**



SCALE(S) SHOWN ARE INTENDED FOR TABLORD (11X17) SIZE DRAWINGS UNLESS NOTICED OTHERWISE

IF NOT 20 mm AS JUST SCALES

P:\2017\6500_Blackmud\Whitemud\Working_Dwg\010_GIS\Act\Map\02_WaterResources\xxxx_FutureDevelopment_Velocity.mxd
DATE: 3/24/2017



Legend:

1.5 L/s/ha Ratio to Existing

- ≥ 1.4
- > 1.3 - 1.4
- > 1.2 - 1.3
- > 1.1 - 1.2
- > 1.0 - 1.1
- ≤ 1.0

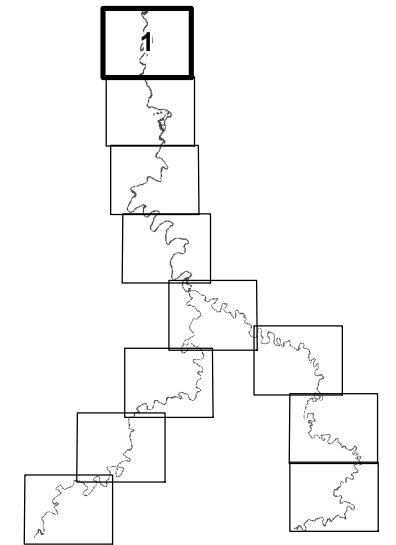


FIGURE No. D-1

BLACKMUD/WHITEMUD CREEK
WATERSHED MANAGEMENT STUDY

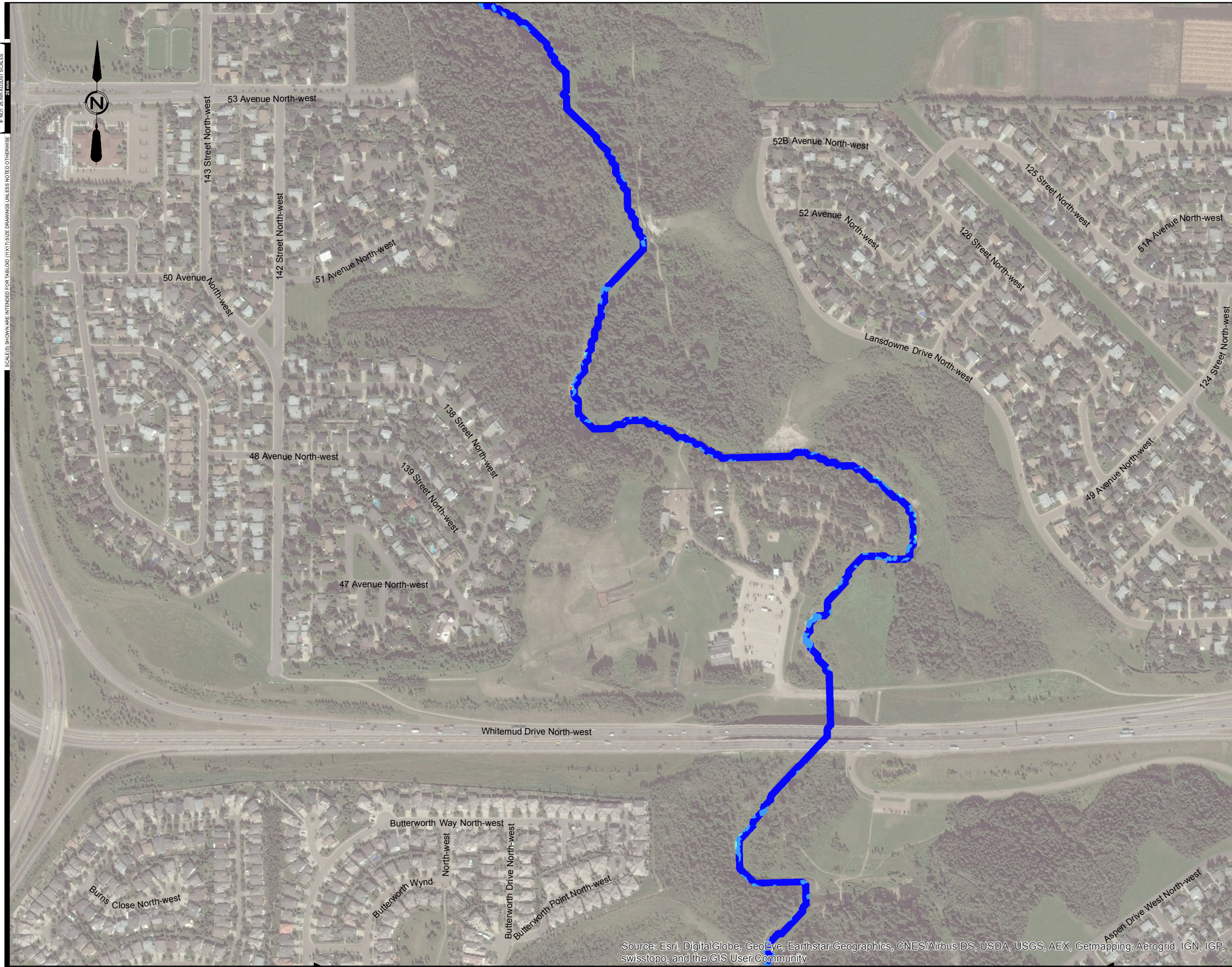
FUTURE DEVELOPMENT DISCHARGE RATE
1.5 L/s/ha RATIO TO EXISTING -
100 YEAR FLOOD VELOCITY

AE PROJECT No.	2016-3785
SCALE	1:5,000
APPROVED	
DATE	2017 MARCH
REV	
DESCRIPTION	ISSUED FOR REPORT

SCALE(S) SHOWN ARE INTENDED FOR TABLOID (11X17) SIZE DRAWINGS UNLESS NOTED OTHERWISE

SCALE(S) SHOWN ARE INTENDED FOR TABLOID (11X17) SIZE DRAWINGS UNLESS NOTED OTHERWISE

P:\2016378500_Blackmud\WhitemudWorking_Dwg\010_GIS\Act\Map\02_WaterResources\FutureDevelopment_Velocity.mxd
DATE: 3/24/2017



Legend:

1.5 L/s/ha Ratio to Existing

- ≥ 1.4
- > 1.3 - 1.4
- > 1.2 - 1.3
- > 1.1 - 1.2
- > 1.0 - 1.1
- ≤ 1.0

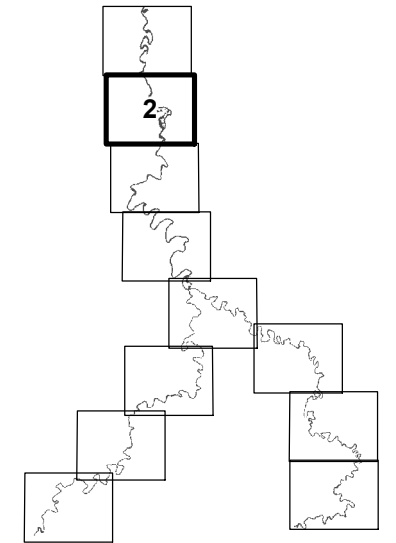


FIGURE No. D-2

BLACKMUD/WHITEMUD CREEK
WATERSHED MANAGEMENT STUDY

FUTURE DEVELOPMENT DISCHARGE RATE
1.5 L/s/ha RATIO TO EXISTING -
100 YEAR FLOOD VELOCITY

AE PROJECT No.	2016-3785
SCALE	1:5,000
APPROVED	
DATE	2017 MARCH
REV	
DESCRIPTION	ISSUED FOR REPORT

IF NOT 20 mm AS SHOWN SCALES

SCALE(S) SHOWN ARE INTENDED FOR TABLOID (11X17) SIZE DRAWINGS UNLESS NOTICED OTHERWISE

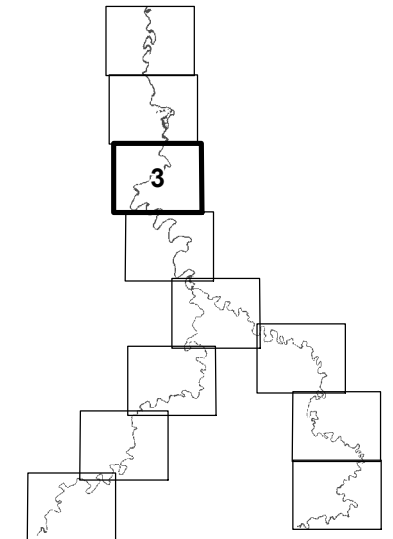
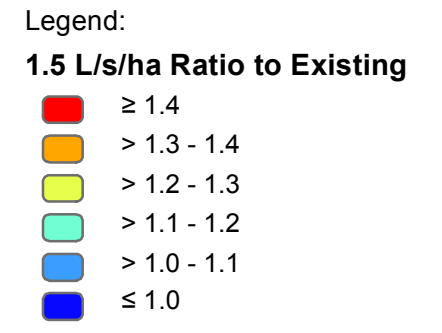
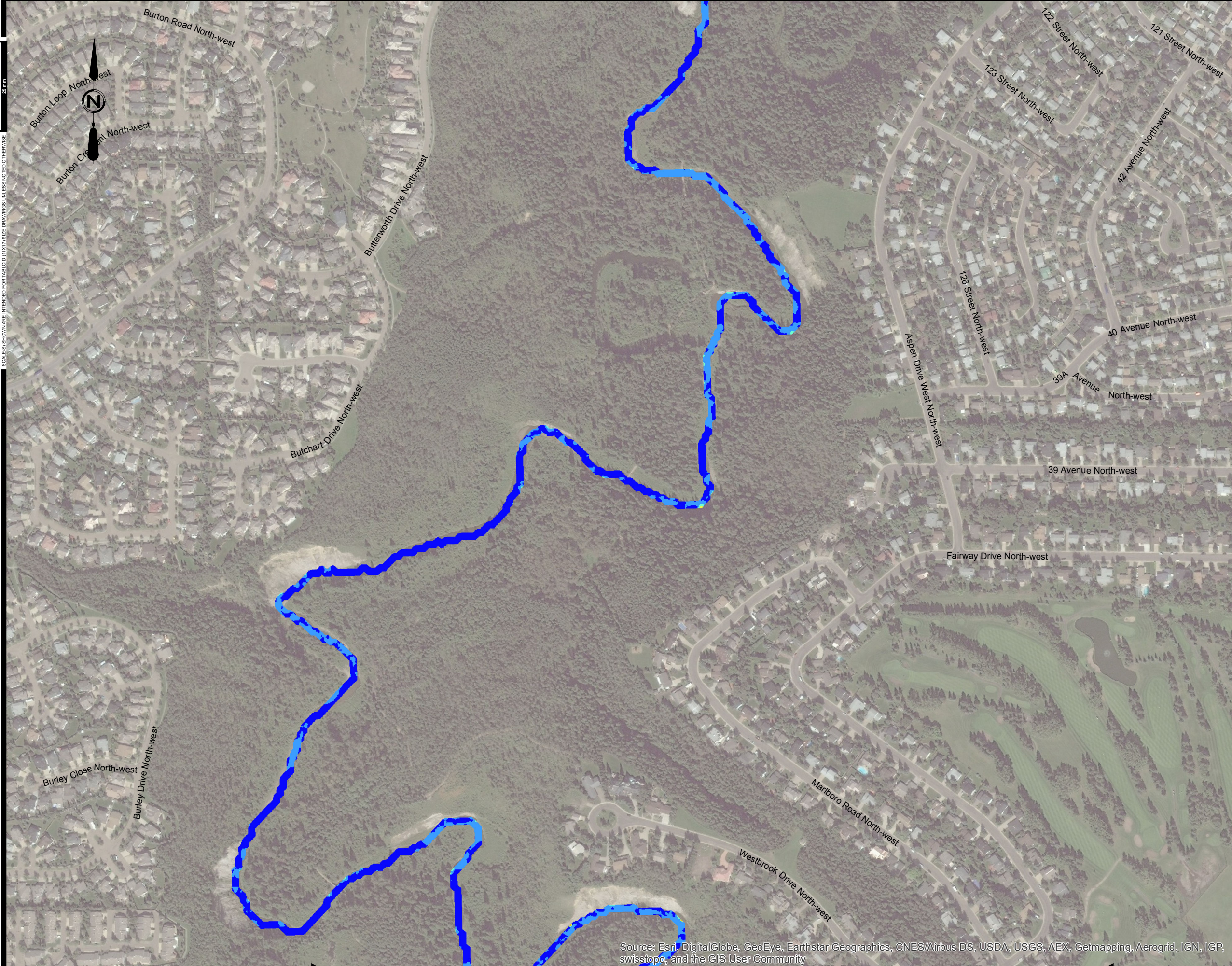


FIGURE No. D-3
 BLACKMUD/WHITEMUD CREEK
 WATERSHED MANAGEMENT STUDY

FUTURE DEVELOPMENT DISCHARGE RATE
 1.5 L/s/ha RATIO TO EXISTING -
 100 YEAR FLOOD VELOCITY

AE PROJECT No.	2016-3785
SCALE	1:5,000
APPROVED	
DATE	2017 MARCH
REV	
DESCRIPTION	ISSUED FOR REPORT

Source: Esri, DigitalGlobe, GeoEye, Earthstar Geographics, CNES/Airbus DS, USDA, USGS, AEX, Getmapping, Aerogrid, IGN, IGP, swisstopo, and the GIS User Community

SCALE(S) SHOWN ARE INTENDED FOR TABLORD (11X17) SIZE DRAWINGS UNLESS NOTICED OTHERWISE
 IF NOT 20 mm ASJUST SCALES
 20 mm



Legend:

- + Erosion Site
- 1.5 L/s/ha Ratio to Existing**
- ≥ 1.4
- > 1.3 - 1.4
- > 1.2 - 1.3
- > 1.1 - 1.2
- > 1.0 - 1.1
- ≤ 1.0

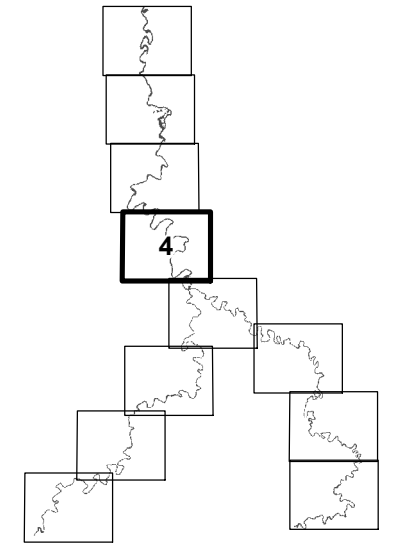


FIGURE No. D-4

BLACKMUD/WHITEMUD CREEK
 WATERSHED MANAGEMENT STUDY

FUTURE DEVELOPMENT DISCHARGE RATE
 1.5 L/s/ha RATIO TO EXISTING -
 100 YEAR FLOOD VELOCITY

AE PROJECT No.	2016-3785
SCALE	1:5,000
APPROVED	
DATE	2017 MARCH
REV	
DESCRIPTION	ISSUED FOR REPORT

SCALE(S) SHOWN ARE INTENDED FOR TABLOID (11X17) SIZE DRAWINGS UNLESS NOTED OTHERWISE
 IF NOT 20 mm AS JUST SCALES
 20 mm

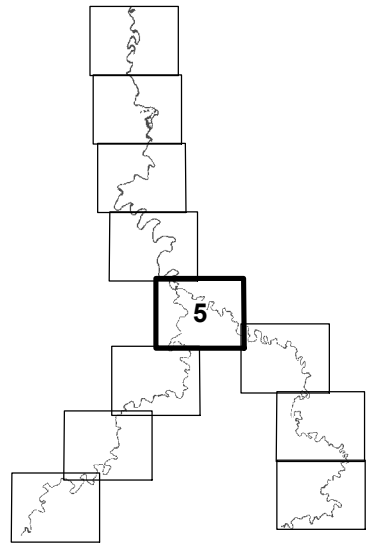


FIGURE No. D-5
 BLACKMUD/WHITEMUD CREEK
 WATERSHED MANAGEMENT STUDY

FUTURE DEVELOPMENT DISCHARGE RATE
 1.5 L/s/ha RATIO TO EXISTING -
 100 YEAR FLOOD VELOCITY

AE PROJECT No.	2016-3785
SCALE	1:5,000
APPROVED	
DATE	2017 MARCH
REV	
DESCRIPTION	ISSUED FOR REPORT

Source: Esri, DigitalGlobe, GeoEye, Earthstar Geographics, CNES/Airbus DS, USDA, USGS, AEX, Getmapping, Aerogrid, IGN, IGP, swisstopo, and the GIS User Community



- Legend:
- + Erosion Site
- 1.5 L/s/ha Ratio to Existing**
- Red: ≥ 1.4
 - Orange: $> 1.3 - 1.4$
 - Yellow: $> 1.2 - 1.3$
 - Light Green: $> 1.1 - 1.2$
 - Blue: $> 1.0 - 1.1$
 - Dark Blue: ≤ 1.0

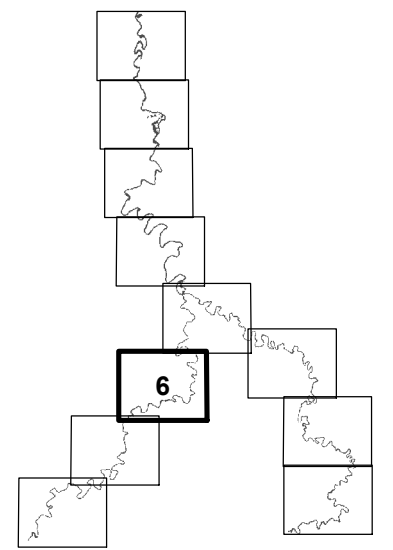


FIGURE No. D-6
 BLACKMUD/WHITEMUD CREEK
 WATERSHED MANAGEMENT STUDY

FUTURE DEVELOPMENT DISCHARGE RATE
 1.5 L/s/ha RATIO TO EXISTING -
 100 YEAR FLOOD VELOCITY

AE PROJECT No.	2016-3785
SCALE	1:5,000
APPROVED	
DATE	2017 MARCH
REV	
DESCRIPTION	ISSUED FOR REPORT

SCALE(S) SHOWN ARE INTENDED FOR TABLOID (11X17) SIZE DRAWINGS UNLESS NOTED OTHERWISE

IF NOT 20 mm AS NOTED OTHERWISE

P:\2016378500_Blackmud\Whitemud\Working_Dwg\010_GIS\Act\Map\02_WaterResources\FutureDevelopment_Velocity.mxd
DATE: 3/24/2017

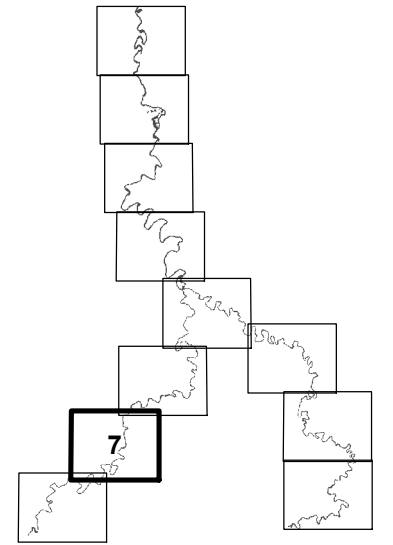
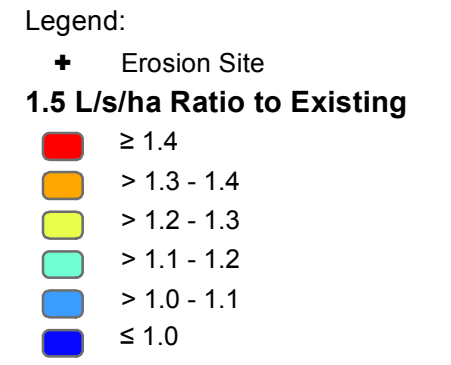


FIGURE No. D-7

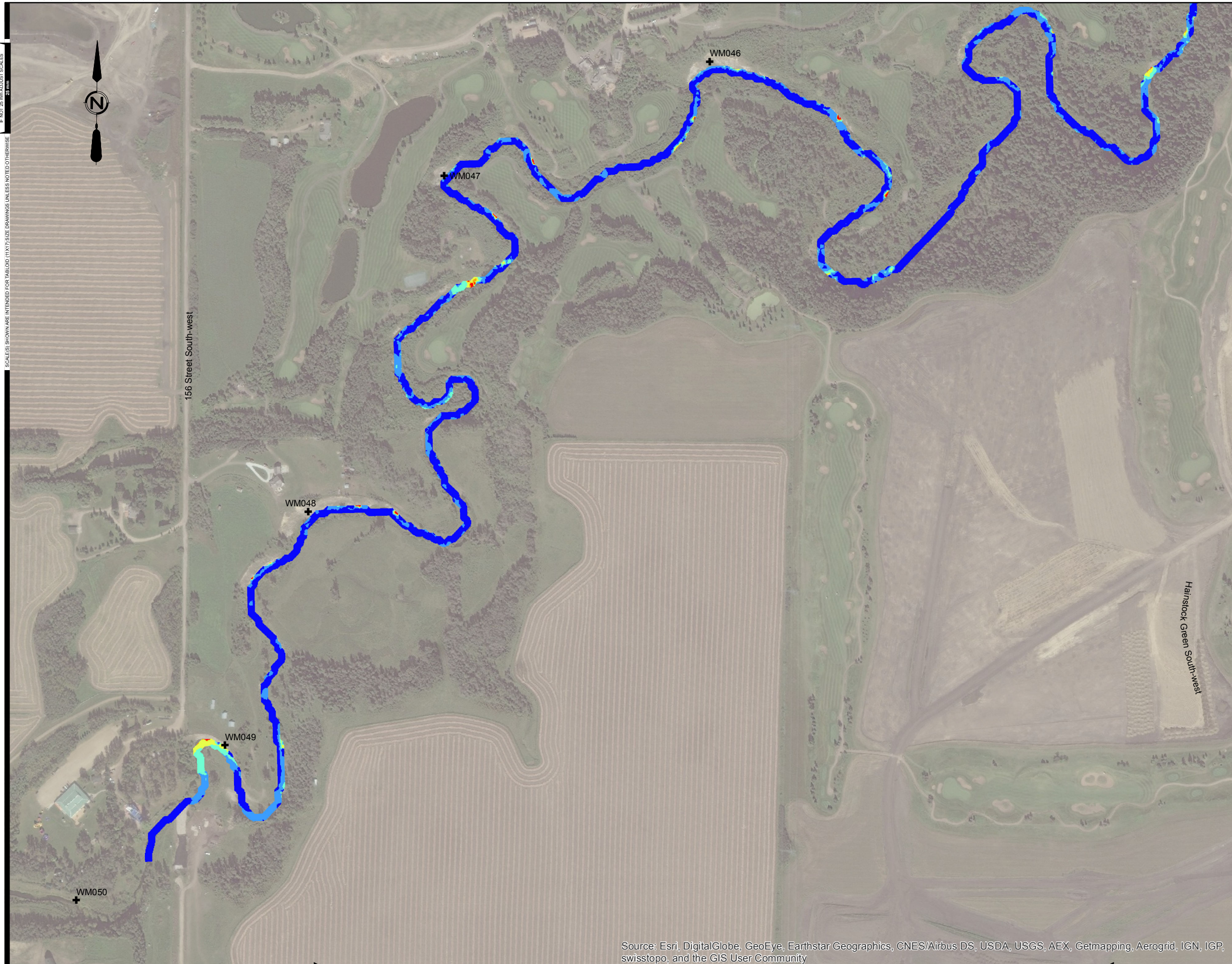
BLACKMUD/WHITEMUD CREEK
WATERSHED MANAGEMENT STUDY

FUTURE DEVELOPMENT DISCHARGE RATE
1.5 L/s/ha RATIO TO EXISTING -
100 YEAR FLOOD VELOCITY

AE PROJECT No.	2016-3785
SCALE	1:5,000
APPROVED	
DATE	2017 MARCH
REV	
DESCRIPTION	ISSUED FOR REPORT

IF NOT 20 mm AS SHOWN SCALES

SCALE(S) SHOWN ARE INTENDED FOR TABLOID (11X17) SIZE DRAWINGS UNLESS NOTED OTHERWISE



Legend:

- + Erosion Site
- 1.5 L/s/ha Ratio to Existing**
- ≥ 1.4
- > 1.3 - 1.4
- > 1.2 - 1.3
- > 1.1 - 1.2
- > 1.0 - 1.1
- ≤ 1.0

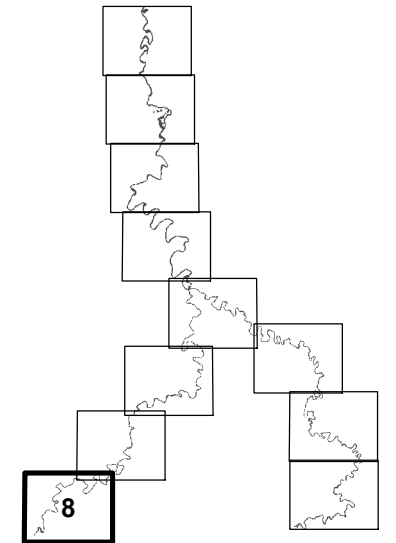


FIGURE No. D-8

BLACKMUD/WHITEMUD CREEK
WATERSHED MANAGEMENT STUDY

FUTURE DEVELOPMENT DISCHARGE RATE
1.5 L/s/ha RATIO TO EXISTING -
100 YEAR FLOOD VELOCITY

AE PROJECT No.	2016-3785
SCALE	1:5,000
APPROVED	
DATE	2017 MARCH
REV	
DESCRIPTION	ISSUED FOR REPORT

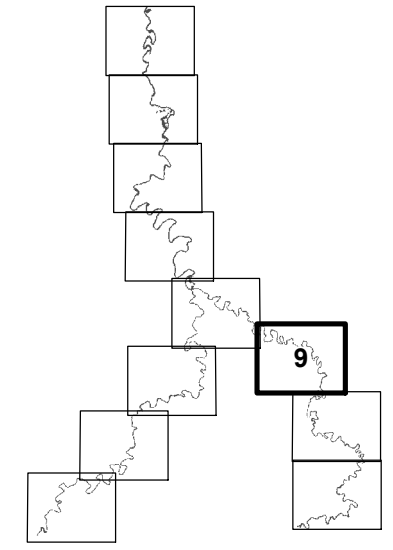
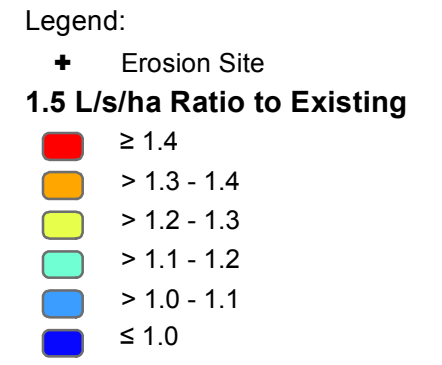


FIGURE No. D-9
 BLACKMUD/WHITEMUD CREEK
 WATERSHED MANAGEMENT STUDY

FUTURE DEVELOPMENT DISCHARGE RATE
 1.5 L/s/ha RATIO TO EXISTING -
 100 YEAR FLOOD VELOCITY

AE PROJECT No.	2016-3785
SCALE	1:5,000
APPROVED	
DATE	2017 MARCH
REV	
DESCRIPTION	ISSUED FOR REPORT

Source: Esri, DigitalGlobe, GeoEye, Earthstar Geographics, CNES/Airbus DS, USDA, USGS, AEX, Getmapping, Aerogrid, IGN, IGP, swisstopo, and the GIS User Community

P:\2017\163785\00_Blackmud_Whitemud\Working_Dwg\010_GIS\AerialMap\02_WaterResources\xxxx_FutureDevelopment_Velocity.mxd
 DATE: 3/24/2017

SCALE(S) SHOWN ARE INTENDED FOR TABLOID (11X17) SIZE DRAWINGS UNLESS NOTICED OTHERWISE
 1" = 200' @ 25 mm AS SHOWN ON SCALE