

IF NOT 20 mm AS SHOWN SCALES
 SCALE(S) SHOWN ARE INTENDED FOR TABLORD (11X17) SIZE DRAWINGS UNLESS NOTED OTHERWISE



Legend:

- + Erosion Site
- 1.5 L/s/ha Ratio to Existing**
- ≥ 1.4
- $> 1.3 - 1.4$
- $> 1.2 - 1.3$
- $> 1.1 - 1.2$
- $> 1.0 - 1.1$
- ≤ 1.0

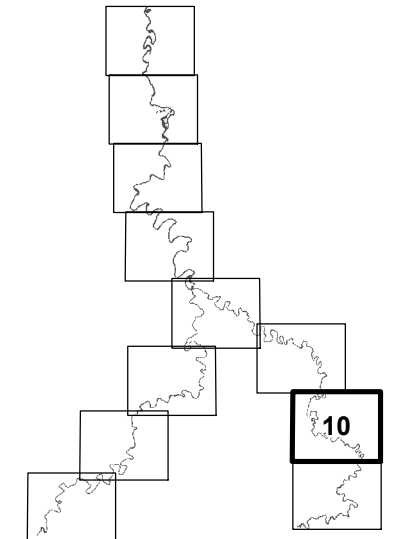


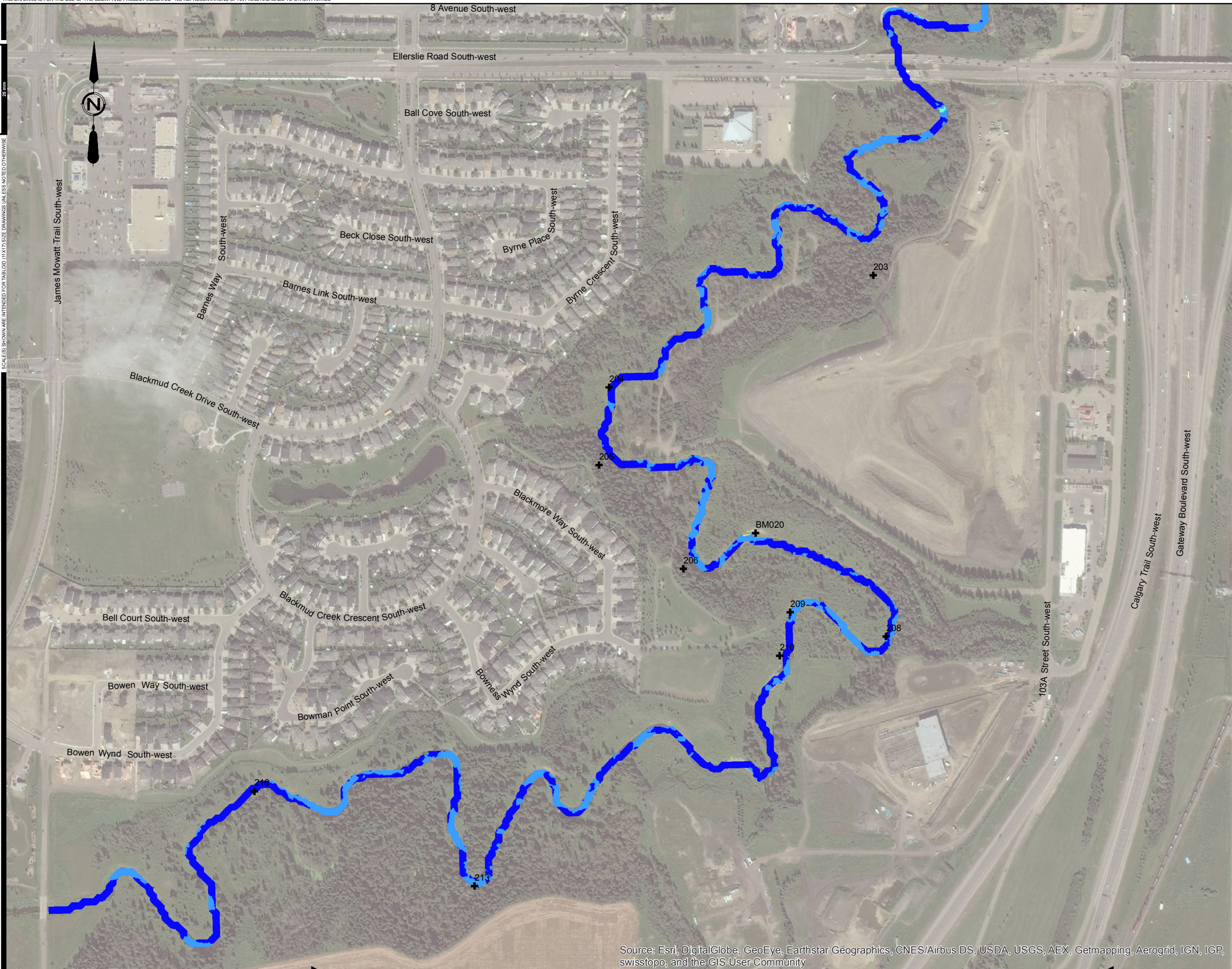
FIGURE No. D-10

BLACKMUD/WHITEMUD CREEK
WATERSHED MANAGEMENT STUDY

FUTURE DEVELOPMENT DISCHARGE RATE
1.5 L/s/ha RATIO TO EXISTING -
100 YEAR FLOOD VELOCITY

| | |
|-----------------------|-------------------|
| AE PROJECT No. | 2016-3785 |
| SCALE | 1:5,000 |
| APPROVED | |
| DATE | 2017 MARCH |
| REV | |
| DESCRIPTION | ISSUED FOR REPORT |

SCALE(S) SHOWN ARE INTENDED FOR TABLORD (11X17) SIZE DRAWINGS UNLESS NOTICED OTHERWISE
 IF NOT 20 mm AS JUST SCALES
 20 mm



- Legend:
- + Erosion Site
 - 1.5 L/s/ha Ratio to Existing**
 - ≥ 1.4
 - > 1.3 - 1.4
 - > 1.2 - 1.3
 - > 1.1 - 1.2
 - > 1.0 - 1.1
 - ≤ 1.0

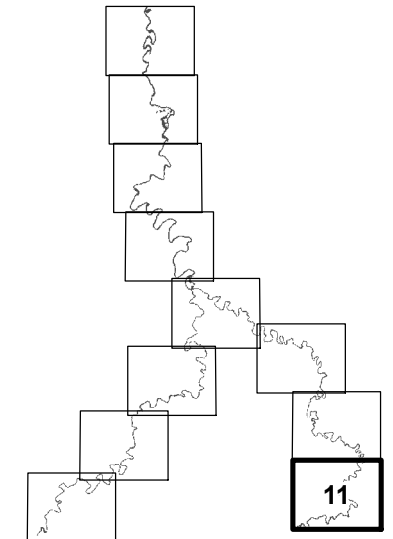


FIGURE No. D-11

BLACKMUD/WHITEMUD CREEK
 WATERSHED MANAGEMENT STUDY

FUTURE DEVELOPMENT DISCHARGE RATE
 1.5 L/s/ha RATIO TO EXISTING -
 100 YEAR FLOOD VELOCITY

| | |
|-----------------------|-------------------|
| AE PROJECT No. | 2016-3785 |
| SCALE | 1:5,000 |
| APPROVED | |
| DATE | 2017 MARCH |
| REV | |
| DESCRIPTION | ISSUED FOR REPORT |

SCALE(S) SHOWN ARE INTENDED FOR TABLORD (11X17) SIZE DRAWINGS UNLESS NOTICED OTHERWISE

IF NOT 20 mm AS JUST SCALES 20 mm

P:\2017\6500_Blackmud\WhitemudWorking_Dwg\010_GIS\Act\Map\02_WaterResources\333_FutureDevelopment_Velocity.mxd
DATE: 3/24/2017

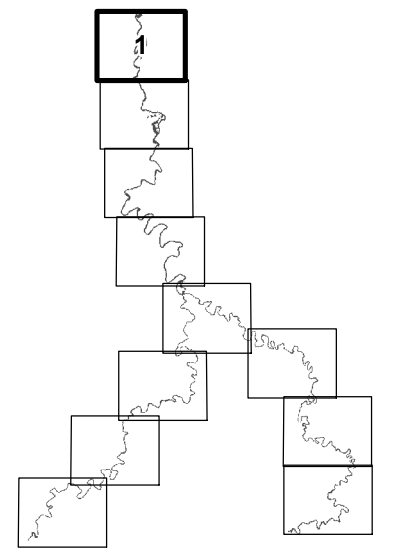
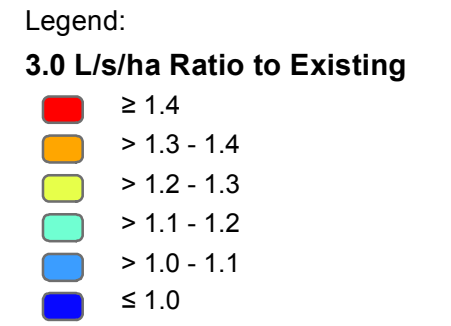
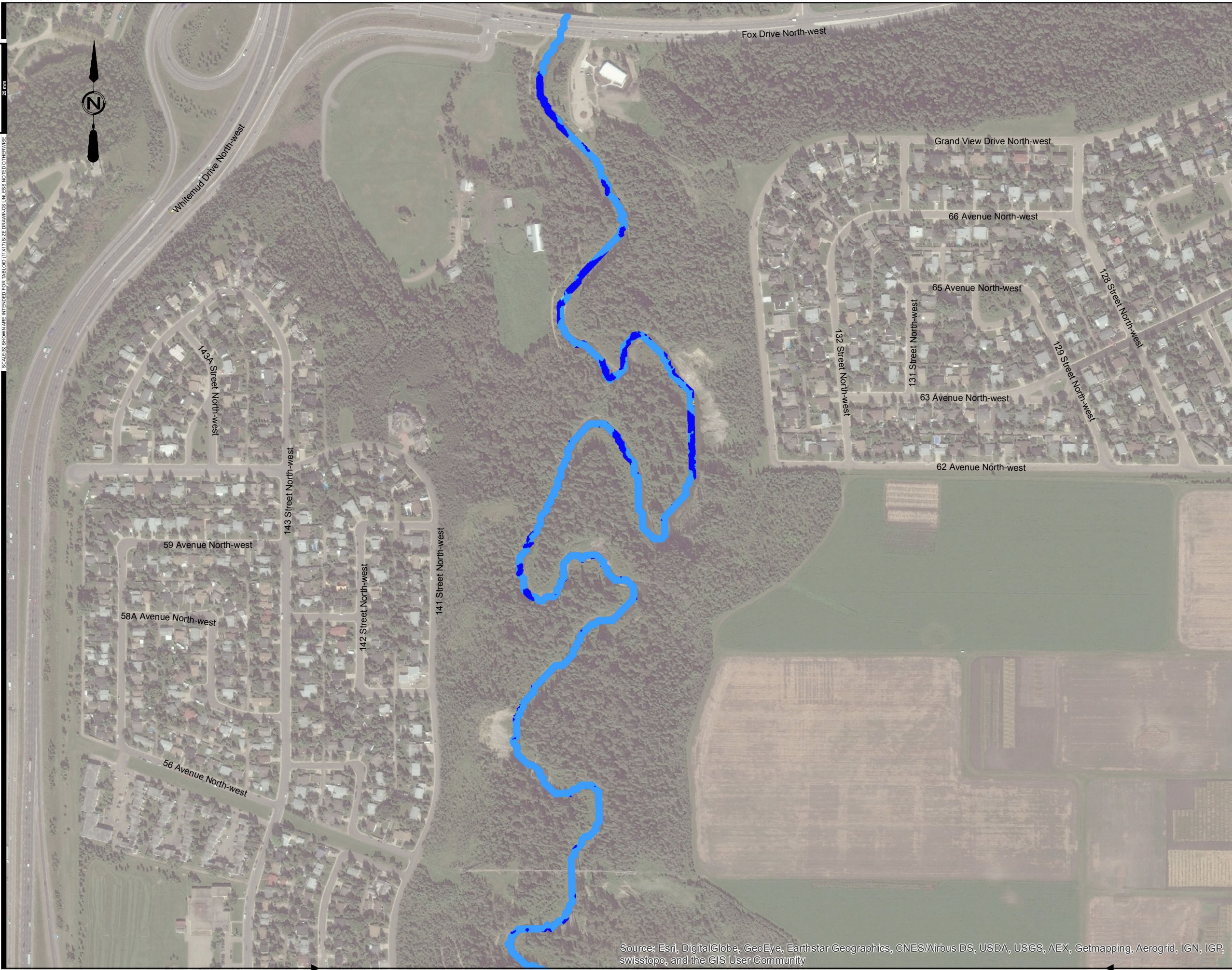


FIGURE No. D-12

BLACKMUD/WHITEMUD CREEK
WATERSHED MANAGEMENT STUDY

FUTURE DEVELOPMENT DISCHARGE RATE
3.0 L/s/ha RATIO TO EXISTING -
100 YEAR FLOOD VELOCITY

| | |
|----------------|-------------------|
| AE PROJECT No. | 2016-3785 |
| SCALE | 1:5,000 |
| APPROVED | |
| DATE | 2017 MARCH |
| REV | |
| DESCRIPTION | ISSUED FOR REPORT |

SCALE(S) SHOWN ARE INTENDED FOR TABLOID (11X17) SIZE DRAWINGS UNLESS NOTICED OTHERWISE

SCALE(S) SHOWN ARE INTENDED FOR TABLOID (11X17) SIZE DRAWINGS UNLESS NOTICED OTHERWISE

P:\2016378500_Blackmud\WhitemudWorking_Dwg\010_GIS\Act\Map\02_WaterResources\3xxx_FutureDevelopment_Velocity.mxd
DATE: 3/24/2017

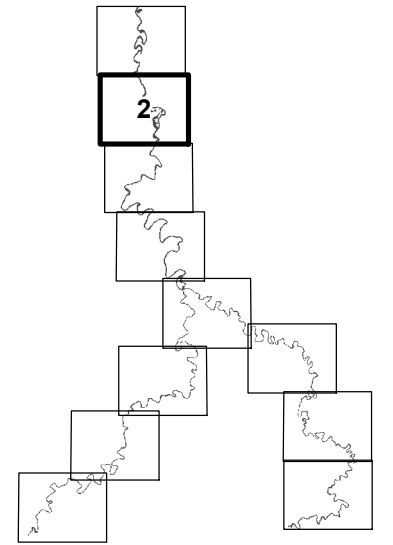
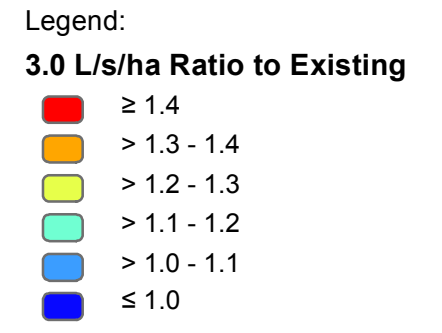


FIGURE No. D-13

BLACKMUD/WHITEMUD CREEK
WATERSHED MANAGEMENT STUDY

FUTURE DEVELOPMENT DISCHARGE RATE
3.0 L/s/ha RATIO TO EXISTING -
100 YEAR FLOOD VELOCITY

| | |
|-----------------------|-------------------|
| AE PROJECT No. | 2016-3785 |
| SCALE | 1:5,000 |
| APPROVED | |
| DATE | 2017 MARCH |
| REV | |
| DESCRIPTION | ISSUED FOR REPORT |

IF NOT 20 mm AS SHOWN SCALES

SCALE(S) SHOWN ARE INTENDED FOR TABLORD (11X17) SIZE DRAWINGS UNLESS NOTICED OTHERWISE

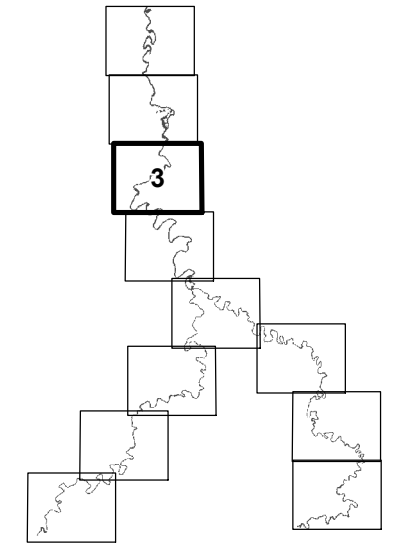
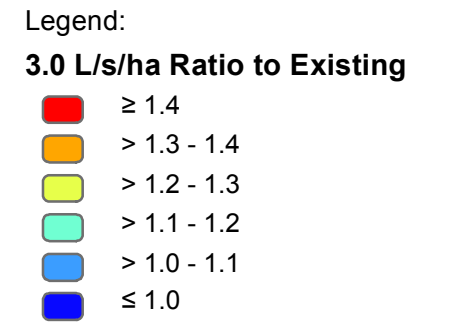
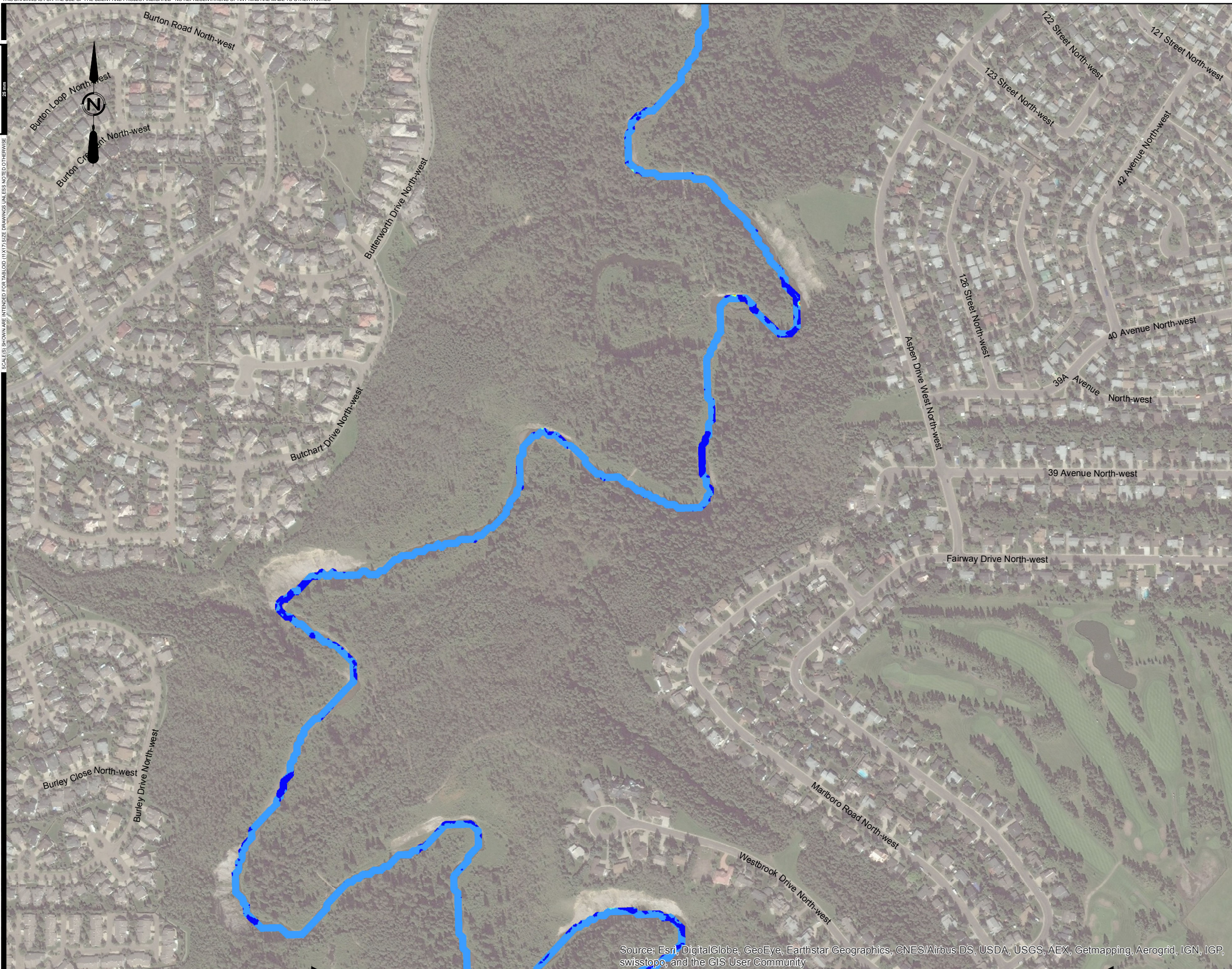


FIGURE No. D-14
 BLACKMUD/WHITEMUD CREEK
 WATERSHED MANAGEMENT STUDY
 FUTURE DEVELOPMENT DISCHARGE RATE
 3.0 L/s/ha RATIO TO EXISTING -
 100 YEAR FLOOD VELOCITY

| | |
|-----------------------|-------------------|
| AE PROJECT No. | 2016-3785 |
| SCALE | 1:5,000 |
| APPROVED | |
| DATE | 2017 MARCH |
| REV | |
| DESCRIPTION | ISSUED FOR REPORT |

Source: Esri, DigitalGlobe, GeoEye, Earthstar Geographics, CNES/Airbus DS, USDA, USGS, AEX, Getmapping, Aerogrid, IGN, IGP, swisstopo, and the GIS User Community

SCALE(S) SHOWN ARE INTENDED FOR TABLORD (11X17) SIZE DRAWINGS UNLESS NOTICED OTHERWISE
IF NOT 20 mm ASJUST SCALES
20 mm



Legend:

- + Erosion Site

3.0 L/s/ha Ratio to Existing

- Red square: ≥ 1.4
- Orange square: $> 1.3 - 1.4$
- Yellow square: $> 1.2 - 1.3$
- Light green square: $> 1.1 - 1.2$
- Blue square: $> 1.0 - 1.1$
- Dark blue square: ≤ 1.0

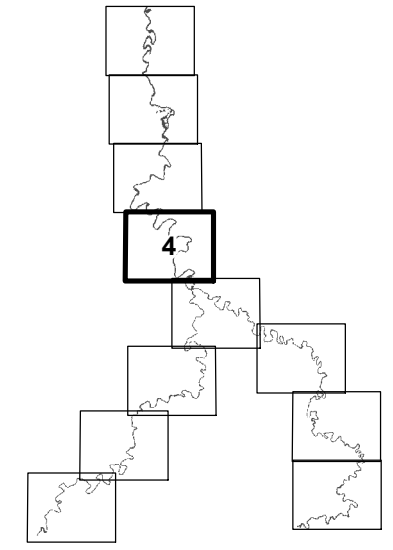


FIGURE No. D-15

BLACKMUD/WHITEMUD CREEK
WATERSHED MANAGEMENT STUDY

FUTURE DEVELOPMENT DISCHARGE RATE
3.0 L/s/ha RATIO TO EXISTING -
100 YEAR FLOOD VELOCITY

| | |
|-----------------------|-------------------|
| AE PROJECT No. | 2016-3785 |
| SCALE | 1:5,000 |
| APPROVED | |
| DATE | 2017 MARCH |
| REV | |
| DESCRIPTION | ISSUED FOR REPORT |

IF NOT 20 mm AS SHOWN SCALES
 SCALES(S) SHOWN ARE INTENDED FOR TABLOID (11X17) SIZE DRAWINGS UNLESS NOTICED OTHERWISE

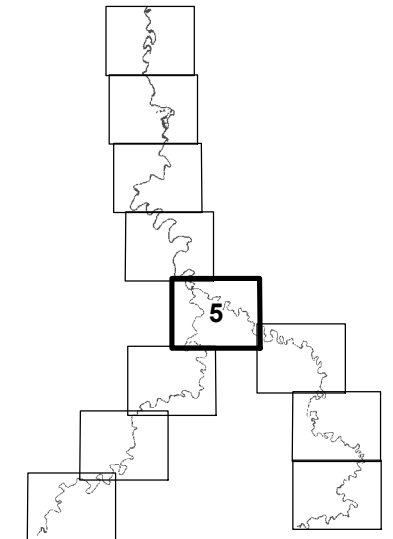
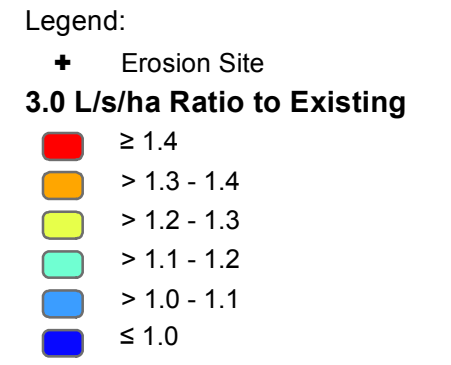
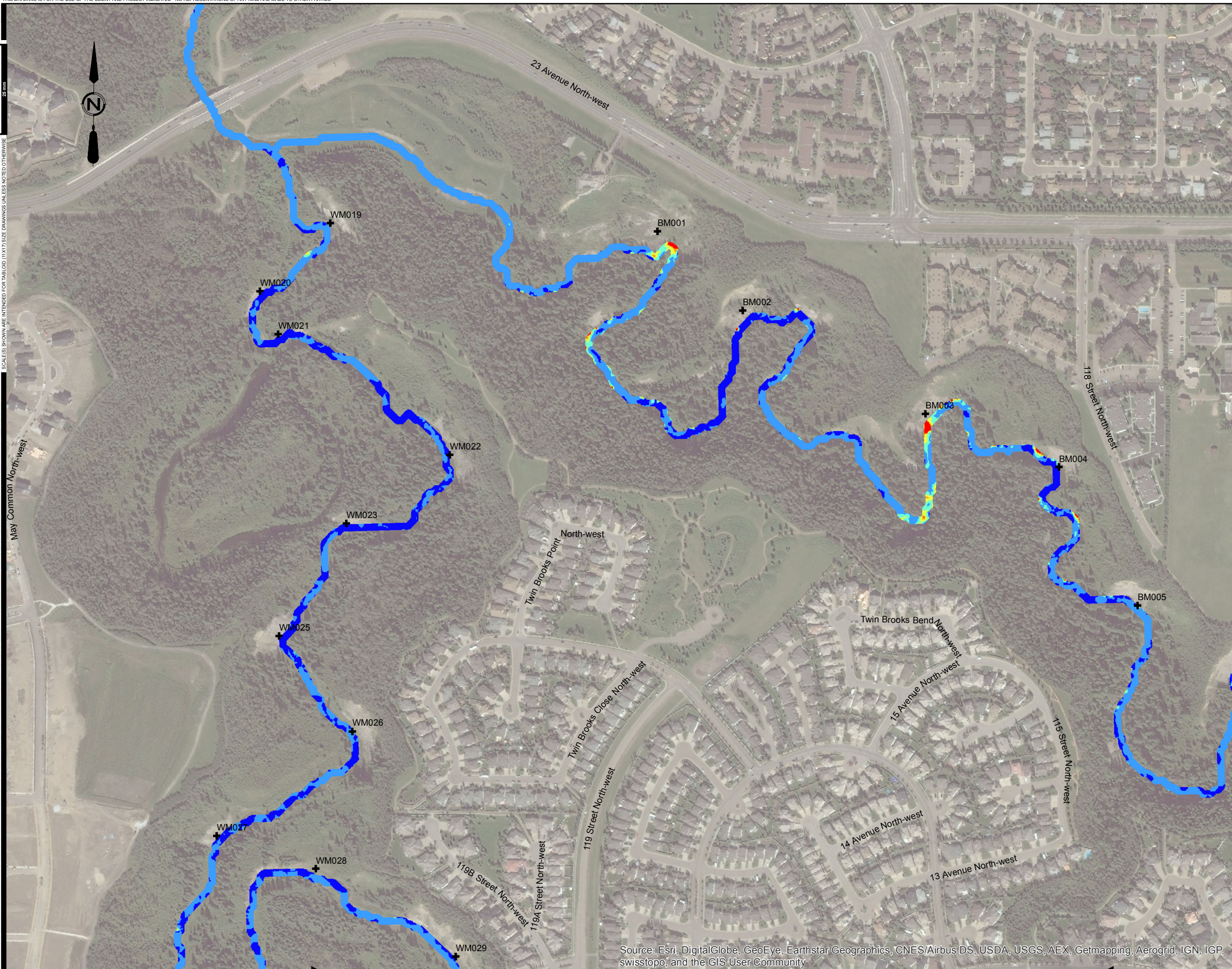


FIGURE No. D-16
 BLACKMUD/WHITEMUD CREEK
 WATERSHED MANAGEMENT STUDY

FUTURE DEVELOPMENT DISCHARGE RATE
 3.0 L/s/ha RATIO TO EXISTING -
 100 YEAR FLOOD VELOCITY

| | |
|-----------------------|-------------------|
| AE PROJECT No. | 2016-3785 |
| SCALE | 1:5,000 |
| APPROVED | |
| DATE | 2017 MARCH |
| REV | |
| DESCRIPTION | ISSUED FOR REPORT |

Source: Esri, DigitalGlobe, GeoEye, Earthstar Geographics, CNES/Airbus DS, USDA, USGS, AEX, Getmapping, Aerogrid, IGN, IGP, swisstopo, and the GIS User Community



Legend:

- +** Erosion Site

3.0 L/s/ha Ratio to Existing

- ≥ 1.4
- $> 1.3 - 1.4$
- $> 1.2 - 1.3$
- $> 1.1 - 1.2$
- $> 1.0 - 1.1$
- ≤ 1.0

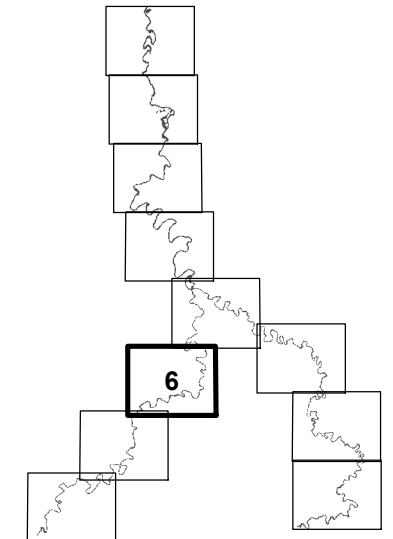


FIGURE No. D-17

BLACKMUD/WHITEMUD CREEK
WATERSHED MANAGEMENT STUDY

FUTURE DEVELOPMENT DISCHARGE RATE
3.0 L/s/ha RATIO TO EXISTING -
100 YEAR FLOOD VELOCITY

| | |
|-----------------------|-------------------|
| AE PROJECT No. | 2016-3785 |
| SCALE | 1:5,000 |
| APPROVED | |
| DATE | 2017 MARCH |
| REV | |
| DESCRIPTION | ISSUED FOR REPORT |