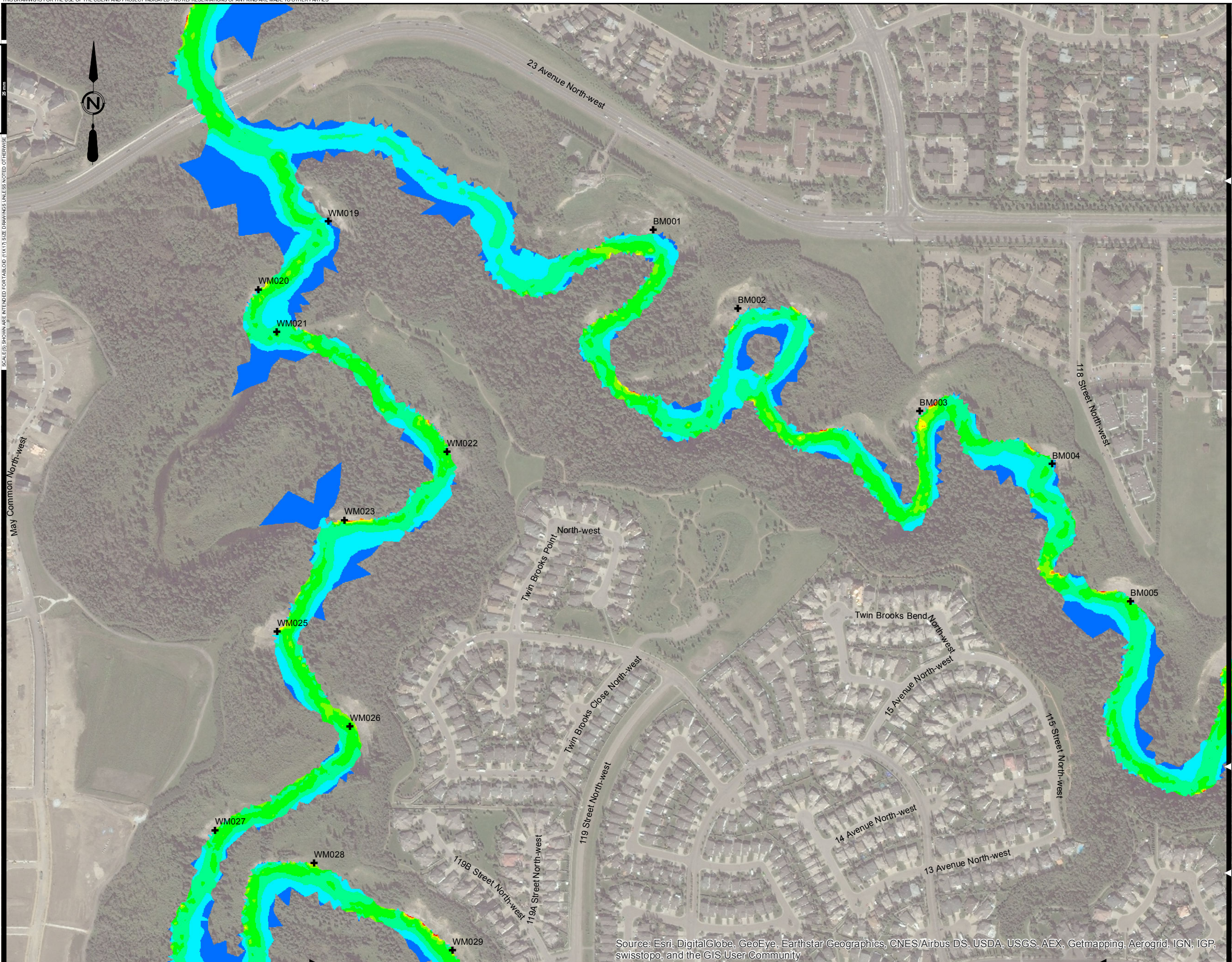


SCALE(S) SHOWN ARE INTENDED FOR TABLED (11X17) SIZE DRAWINGS UNLESS NOTED OTHERWISE

SCALE(S) SHOWN ARE INTENDED FOR TABLED (11X17) SIZE DRAWINGS UNLESS NOTED OTHERWISE

May Common North-west

P:\2016\76500_Blackmud_Whitemud\Working_Dwg\010_GIS\Acot\p02_WhitemudResources\FutureDevelopment_Velocity.mxd
DATE: 3/21/2017



- Legend:
- + Erosion Site
- Velocity (3.0 L/s/ha)**
- >3.5 - 4.0
 - >3.0 - 3.5
 - >2.5 - 3.0
 - >2.0 - 2.5
 - >1.5 - 2.0
 - >1.0 - 1.5
 - >0.5 - 1.0
 - >0.0 - 0.5

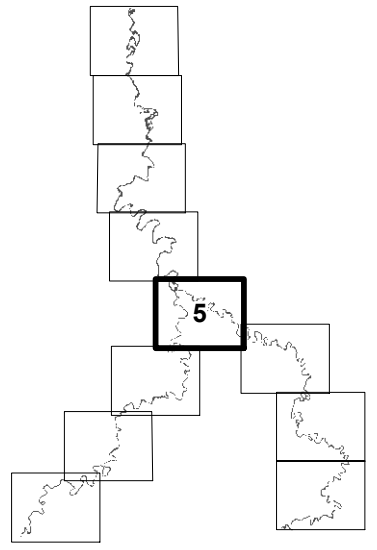


FIGURE No. C-16
BLACKMUD/WHITEMUD CREEK
WATERSHED MANAGEMENT STUDY
FUTURE DEVELOPMENT DISCHARGE RATE
3.0 L/s/ha - 100 YEAR FLOOD VELOCITY

AE PROJECT No.	2016-3785
SCALE	1:5,000
APPROVED	
DATE	2017 MARCH
REV	
DESCRIPTION	ISSUED FOR REPORT

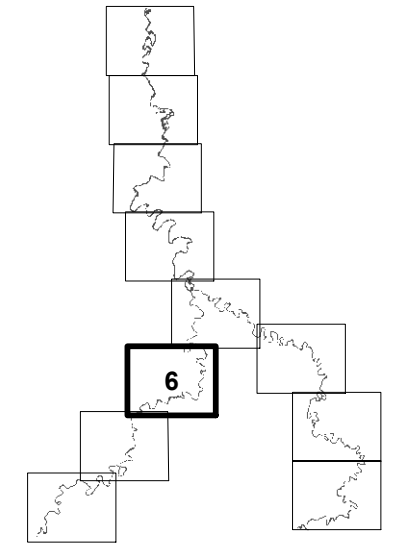
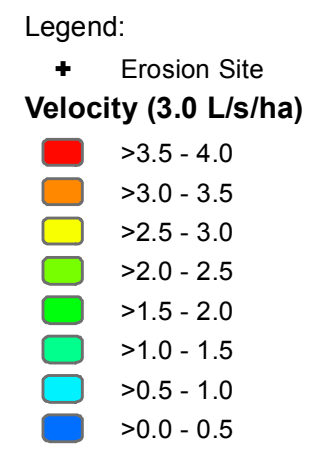
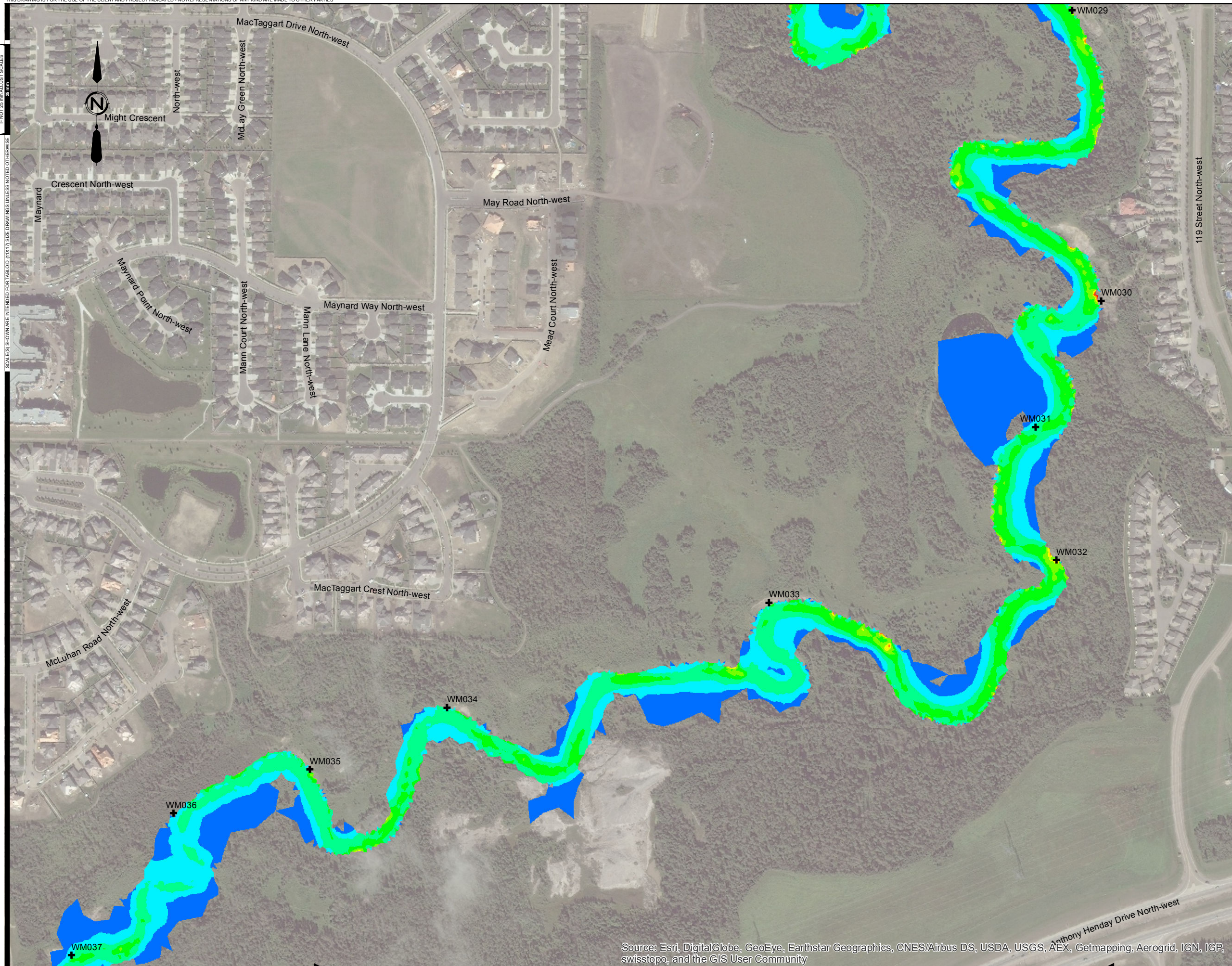
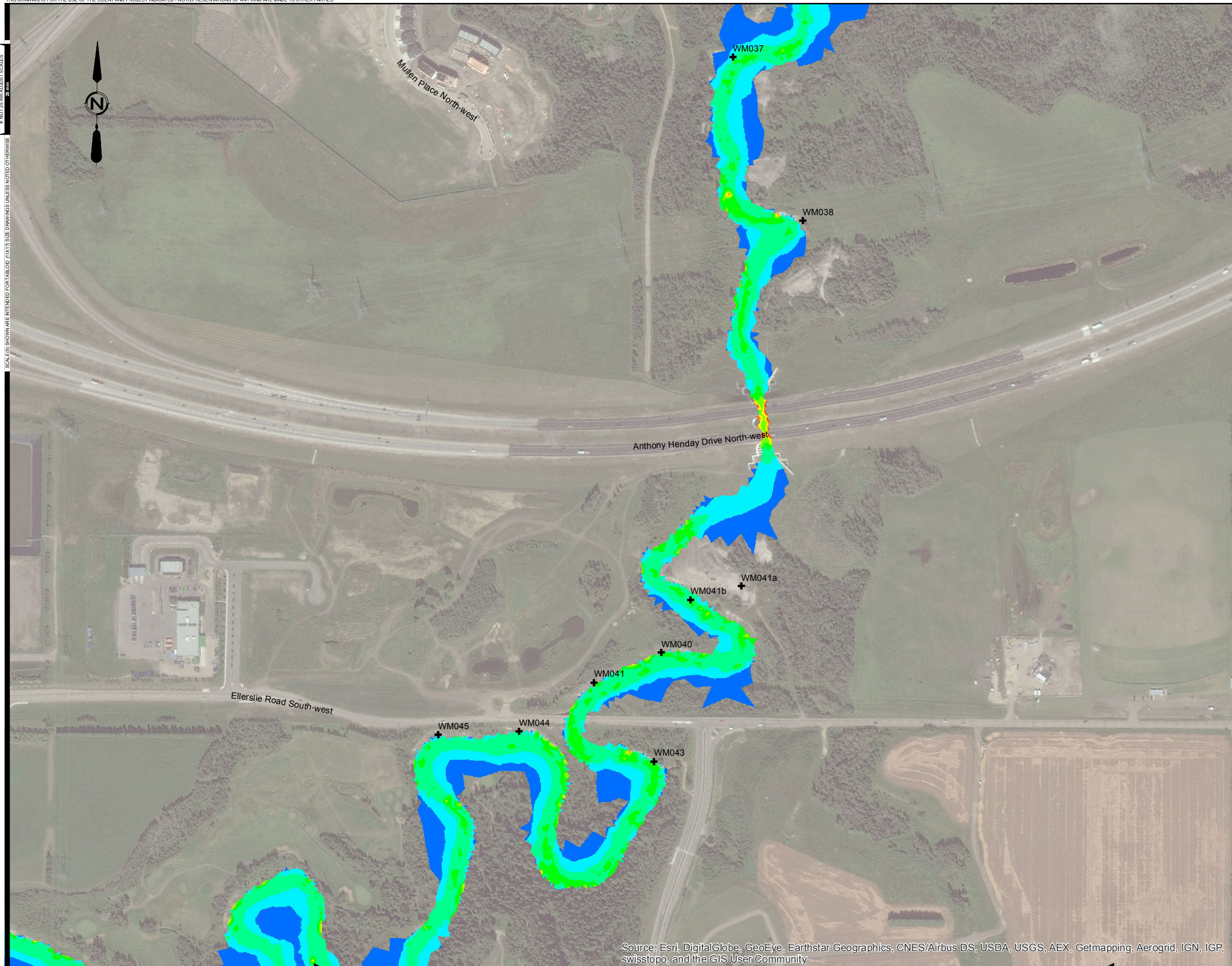


FIGURE No. C-17
 BLACKMUD/WHITEMUD CREEK
 WATERSHED MANAGEMENT STUDY
 FUTURE DEVELOPMENT DISCHARGE RATE
 3.0 L/s/ha - 100 YEAR FLOOD VELOCITY

AE PROJECT No.	2016-3785
SCALE	1:5,000
APPROVED DATE	2017 MARCH
REV DESCRIPTION	ISSUED FOR REPORT



- Legend:
- + Erosion Site
 - Velocity (3.0 L/s/ha)**
 - >3.5 - 4.0
 - >3.0 - 3.5
 - >2.5 - 3.0
 - >2.0 - 2.5
 - >1.5 - 2.0
 - >1.0 - 1.5
 - >0.5 - 1.0
 - >0.0 - 0.5

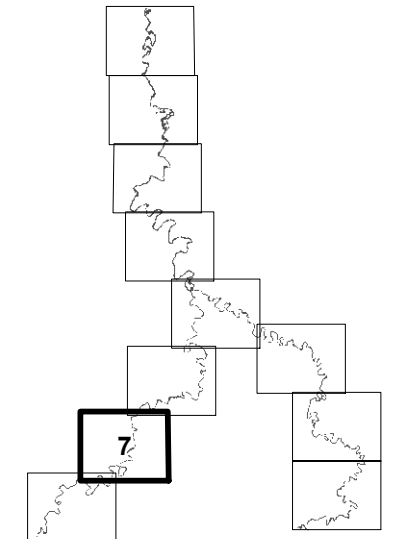
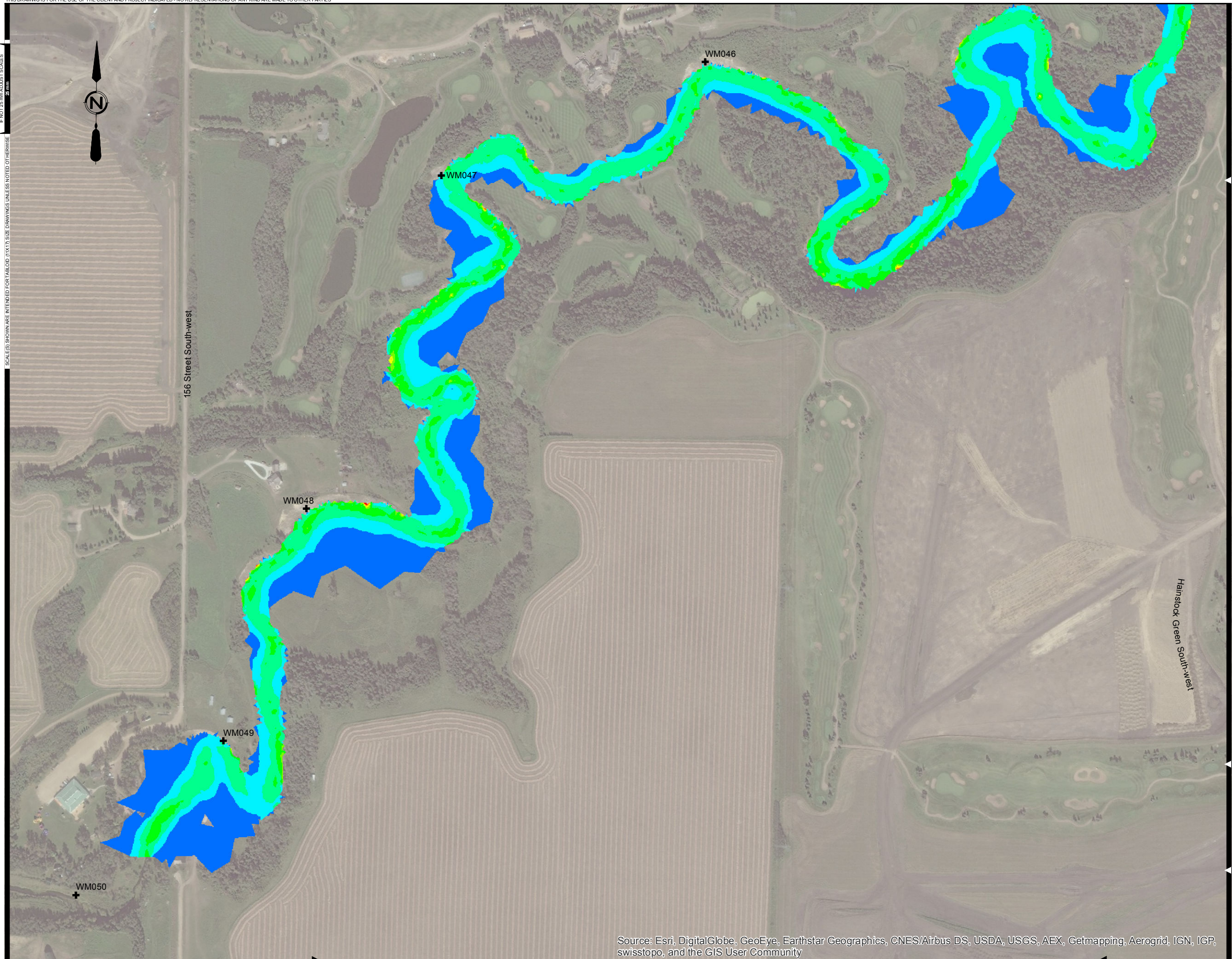


FIGURE No. C-18
 BLACKMUD/WHITEMUD CREEK
 WATERSHED MANAGEMENT STUDY
 FUTURE DEVELOPMENT DISCHARGE RATE
 3.0 L/s/ha - 100 YEAR FLOOD VELOCITY

AE PROJECT No.	2016-3785
SCALE	1:5,000
APPROVED	
DATE	2017 MARCH
REV	
DESCRIPTION	ISSUED FOR REPORT



Legend:

- + Erosion Site
- Velocity (3.0 L/s/ha)**
- >3.5 - 4.0
- >3.0 - 3.5
- >2.5 - 3.0
- >2.0 - 2.5
- >1.5 - 2.0
- >1.0 - 1.5
- >0.5 - 1.0
- >0.0 - 0.5

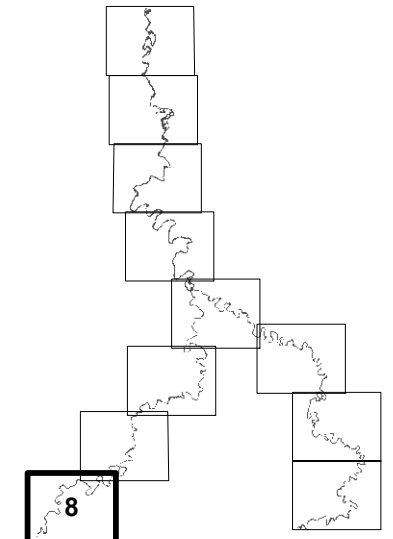


FIGURE No. C-19

BLACKMUD/WHITEMUD CREEK
WATERSHED MANAGEMENT STUDY

FUTURE DEVELOPMENT DISCHARGE RATE
3.0 L/s/ha - 100 YEAR FLOOD VELOCITY

AE PROJECT No.	2016-3785
SCALE	1:5,000
APPROVED	
DATE	2017 MARCH
REV	
DESCRIPTION	ISSUED FOR REPORT

THIS DRAWING IS FOR THE USE OF THE CLIENT AND PROJECT INDICATED - NO REPRESENTATIONS OF ANY KIND ARE MADE TO OTHER PARTIES

SCALE(S) SHOWN ARE INTENDED FOR TABLET (11X17) SIZE DRAWINGS UNLESS NOTED OTHERWISE
IF NOT 24" x 36" AS SHOWN SCALES



- Legend:
- + Erosion Site
 - Velocity (3.0 L/s/ha)**
 - >3.5 - 4.0
 - >3.0 - 3.5
 - >2.5 - 3.0
 - >2.0 - 2.5
 - >1.5 - 2.0
 - >1.0 - 1.5
 - >0.5 - 1.0
 - >0.0 - 0.5

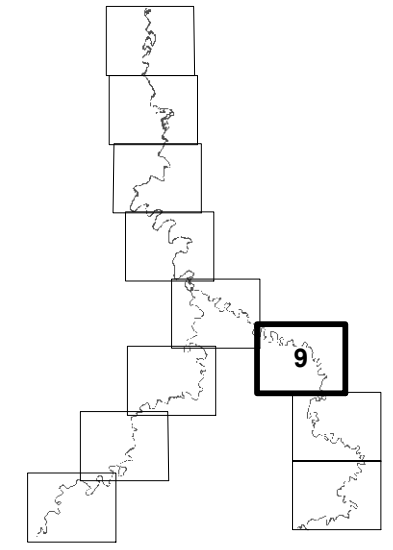


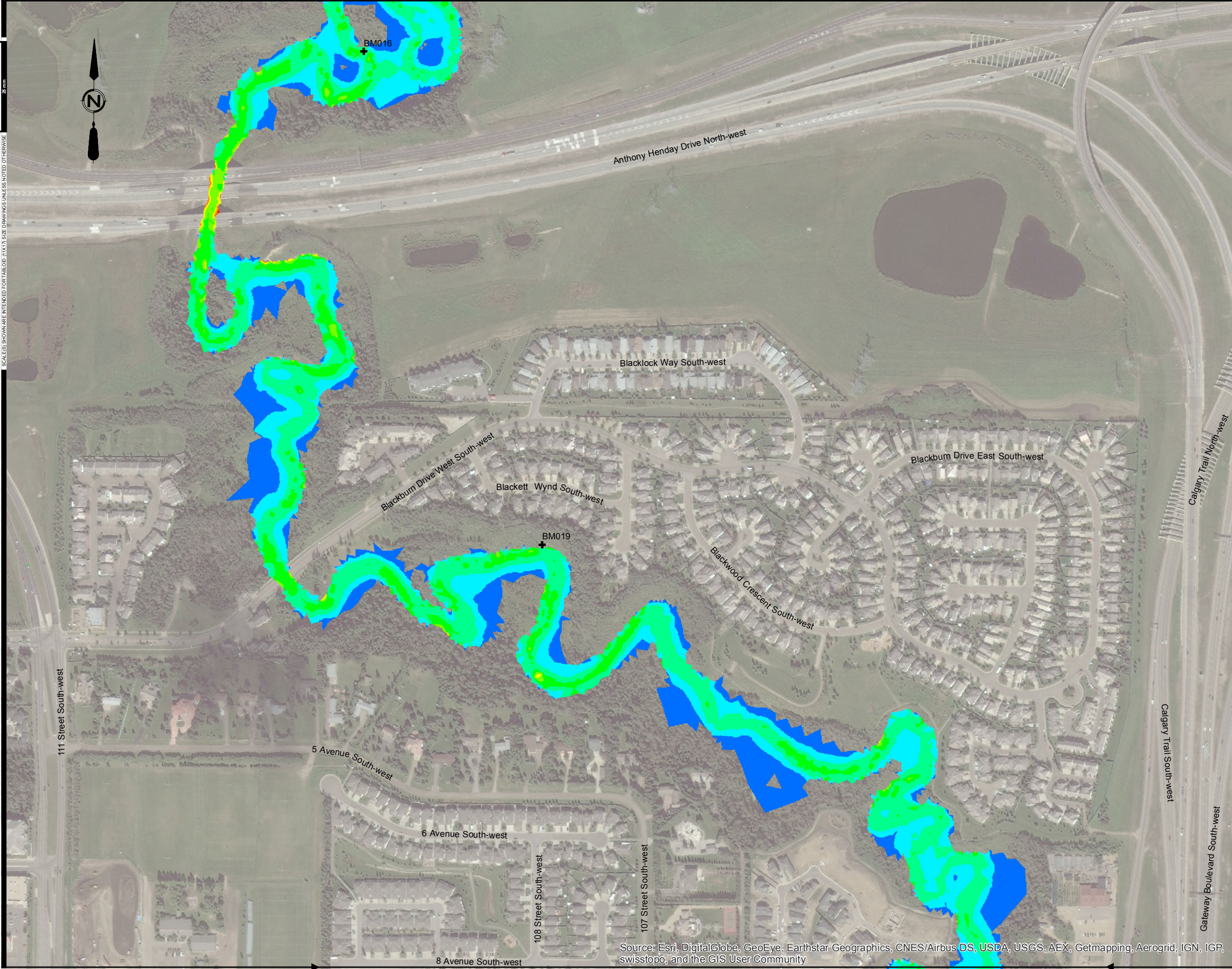
FIGURE No. C-20
 BLACKMUD/WHITEMUD CREEK
 WATERSHED MANAGEMENT STUDY
 FUTURE DEVELOPMENT DISCHARGE RATE
 3.0 L/s/ha - 100 YEAR FLOOD VELOCITY

AE PROJECT No.	2016-3785
SCALE	1:5,000
APPROVED	
DATE	2017 MARCH
REV	
DESCRIPTION	ISSUED FOR REPORT

Source: Esri, DigitalGlobe, GeoEye, Earthstar Geographics, CNES/Airbus DS, USDA, USGS, AEX, Getmapping, Aerogrid, IGN, IGP, swisstopo, and the GIS User Community

P:\2016\3785\00_Blackmud_Whitemud\Working_Dwg\010_GIS\Acrobat\02_WaterResources\xxx_FutureDevelopment_Velocity.mxd
 DATE: 3/21/2017

SCALE(S) SHOWN ARE INTENDED FOR TABLED (11X17) SIZE DRAWINGS UNLESS NOTED OTHERWISE
IF NOT 24" x 36" AS SHOWN SCALES



Legend:

- + Erosion Site
- Velocity (3.0 L/s/ha)**
- >3.5 - 4.0
- >3.0 - 3.5
- >2.5 - 3.0
- >2.0 - 2.5
- >1.5 - 2.0
- >1.0 - 1.5
- >0.5 - 1.0
- >0.0 - 0.5

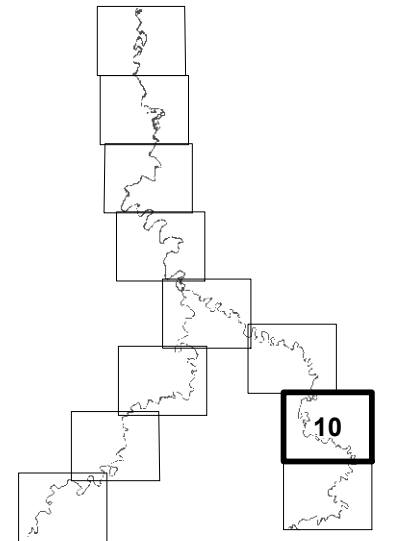
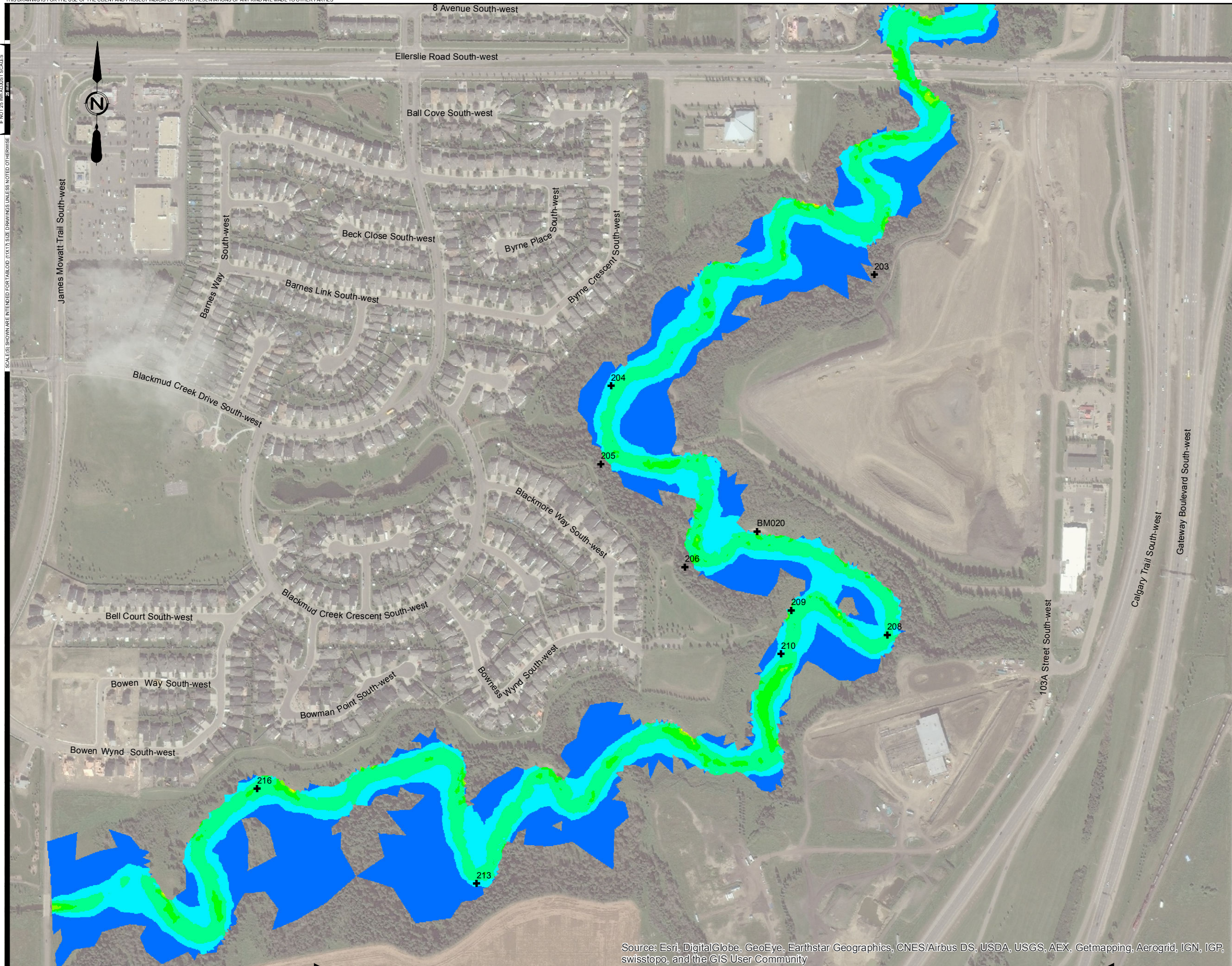


FIGURE No. C-21

BLACKMUD/WHITEMUD CREEK
WATERSHED MANAGEMENT STUDY

FUTURE DEVELOPMENT DISCHARGE RATE
3.0 L/s/ha - 100 YEAR FLOOD VELOCITY

AE PROJECT No.	2016-3785
SCALE	1:5,000
APPROVED DATE	2017 MARCH
REV DESCRIPTION	ISSUED FOR REPORT



- Legend:
- + Erosion Site
 - Velocity (3.0 L/s/ha)**
 - >3.5 - 4.0
 - >3.0 - 3.5
 - >2.5 - 3.0
 - >2.0 - 2.5
 - >1.5 - 2.0
 - >1.0 - 1.5
 - >0.5 - 1.0
 - >0.0 - 0.5

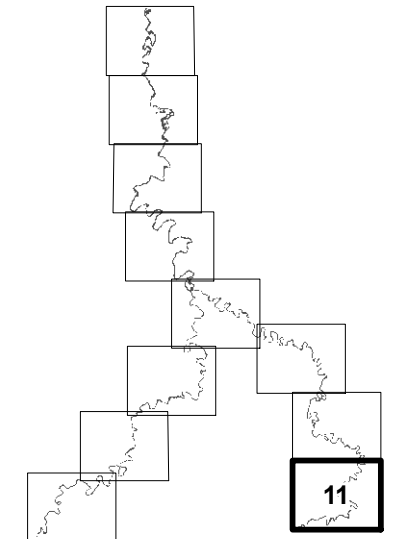


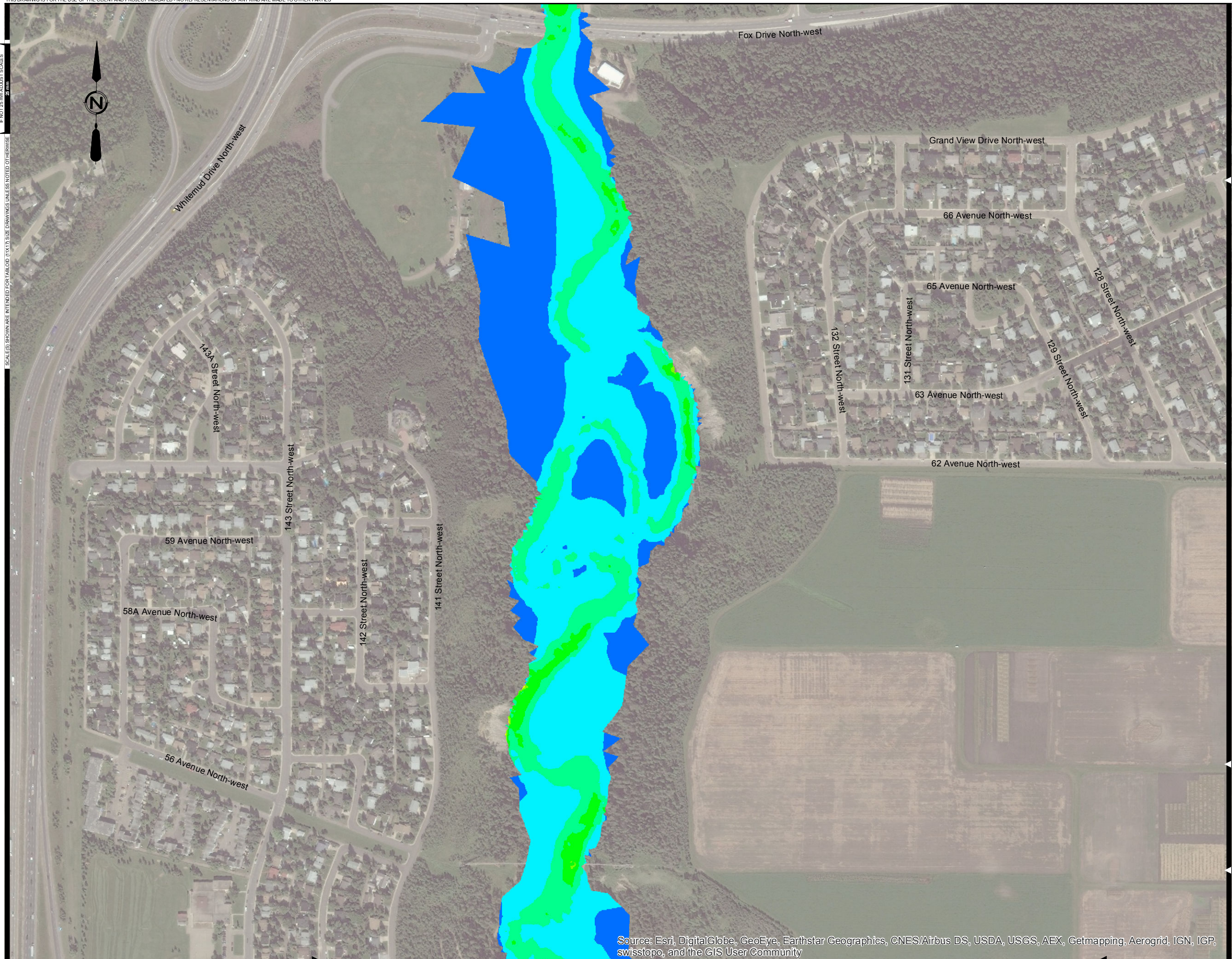
FIGURE No. C-22
 BLACKMUD/WHITEMUD CREEK
 WATERSHED MANAGEMENT STUDY
 FUTURE DEVELOPMENT DISCHARGE RATE
 3.0 L/s/ha - 100 YEAR FLOOD VELOCITY

AE PROJECT No.	2016-3785
SCALE	1:5,000
APPROVED	
DATE	2017 MARCH
REV	
DESCRIPTION	ISSUED FOR REPORT

Source: Esri, DigitalGlobe, GeoEye, Earthstar Geographics, CNES/Airbus DS, USDA, USGS, AEX, Getmapping, Aerogrid, IGN, IGP, swisstopo, and the GIS User Community

IF NOT 24" x 36" AS SHOWN ON SCALE

SCALE(S) SHOWN ARE INTENDED FOR TABLET (11x17) SIZE DRAWINGS UNLESS NOTED OTHERWISE



- Legend:
- Velocity (5.0 L/s/ha)**
- >3.5 - 4.0
 - >3.0 - 3.5
 - >2.5 - 3.0
 - >2.0 - 2.5
 - >1.5 - 2.0
 - >1.0 - 1.5
 - >0.5 - 1.0
 - >0.0 - 0.5

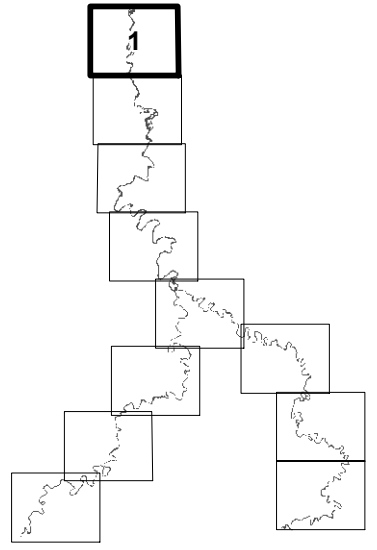


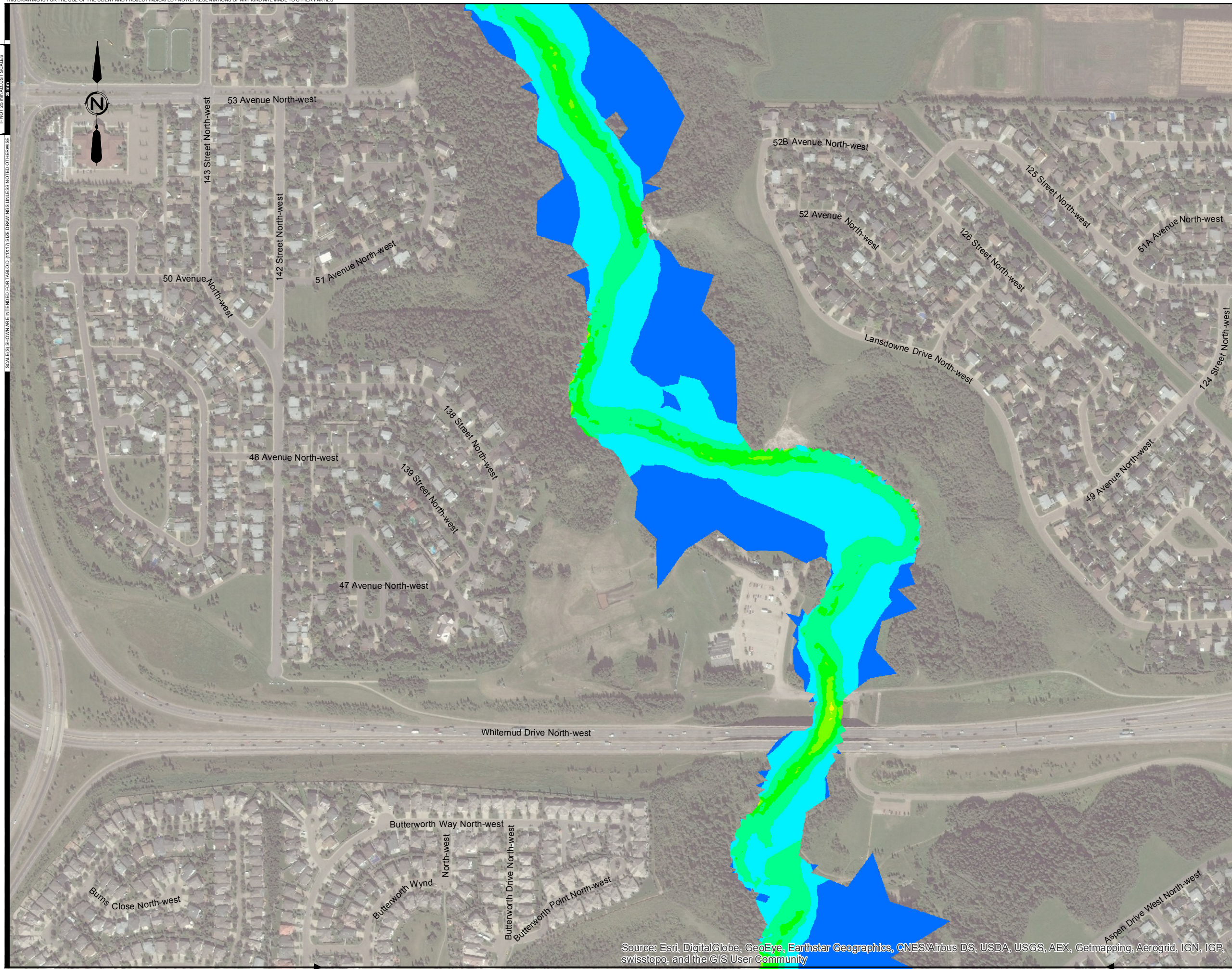
FIGURE No. C-23
 BLACKMUD/WHITEMUD CREEK
 WATERSHED MANAGEMENT STUDY
 FUTURE DEVELOPMENT DISCHARGE RATE
 5.0 L/s/ha - 100 YEAR FLOOD VELOCITY

AE PROJECT No.	2016-3785
SCALE	1:5,000
APPROVED DATE	2017 MARCH
REV DESCRIPTION	ISSUED FOR REPORT

Source: Esri, DigitalGlobe, GeoEye, Earthstar Geographics, CNES/Airbus DS, USDA, USGS, AEX, Getmapping, Aerogrid, IGN, IGP, swisstopo, and the GIS User Community

SCALE(S) SHOWN ARE INTENDED FOR TABLET (11X17) SIZE DRAWINGS UNLESS NOTICED OTHERWISE
IF NOT 24" x 36" ASBEST SCALE

P:\2018\76500_Blackmud_Whitemud\Working_Dwg\010_GIS\Acot\Map02_WaterResources\xxxx_FutureDevelopment_Velocity.mxd
DATE: 3/21/2017



- Legend:
- Velocity (5.0 L/s/ha)**
- >3.5 - 4.0
 - >3.0 - 3.5
 - >2.5 - 3.0
 - >2.0 - 2.5
 - >1.5 - 2.0
 - >1.0 - 1.5
 - >0.5 - 1.0
 - >0.0 - 0.5

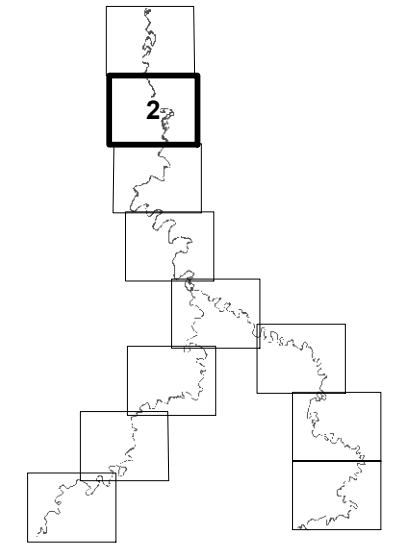
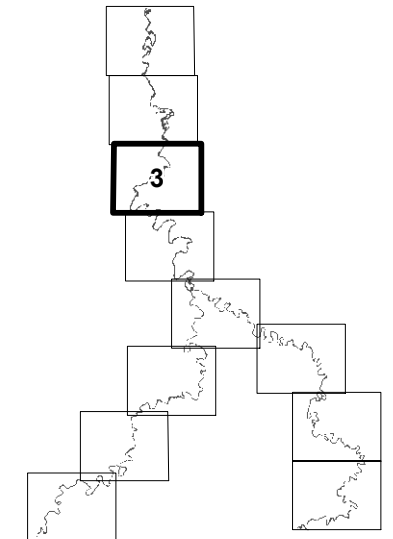
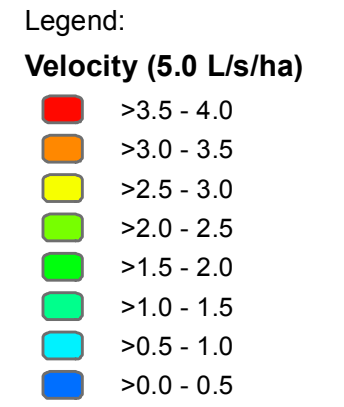
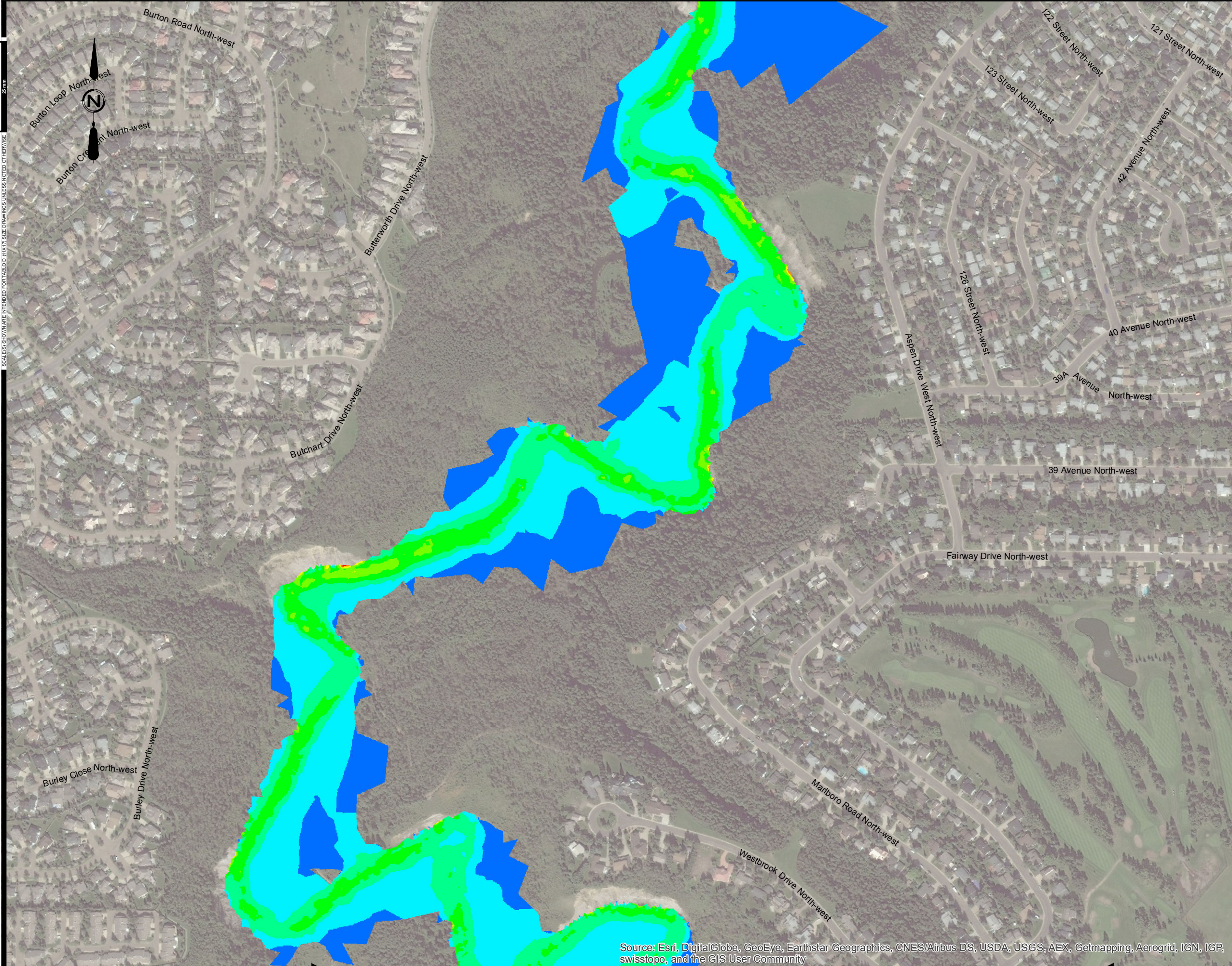


FIGURE No. C-24
 BLACKMUD/WHITEMUD CREEK
 WATERSHED MANAGEMENT STUDY
 FUTURE DEVELOPMENT DISCHARGE RATE
 5.0 L/s/ha - 100 YEAR FLOOD VELOCITY

AE PROJECT No.	2016-3785
SCALE	1:5,000
APPROVED DATE	2017 MARCH
REV DESCRIPTION	ISSUED FOR REPORT

Source: Esri, DigitalGlobe, GeoEye, Earthstar Geographics, CNES/Airbus DS, USDA, USGS, AEX, Getmapping, Aerogrid, IGN, IGP, swisstopo, and the GIS User Community



Source: Esri, DigitalGlobe, GeoEye, Earthstar Geographics, CNES/Airbus DS, USDA, USGS, AEX, Getmapping, Aerogrid, IGN, IGP, swisstopo, and the GIS User Community

FIGURE No. C-25

BLACKMUD/WHITEMUD CREEK
WATERSHED MANAGEMENT STUDY

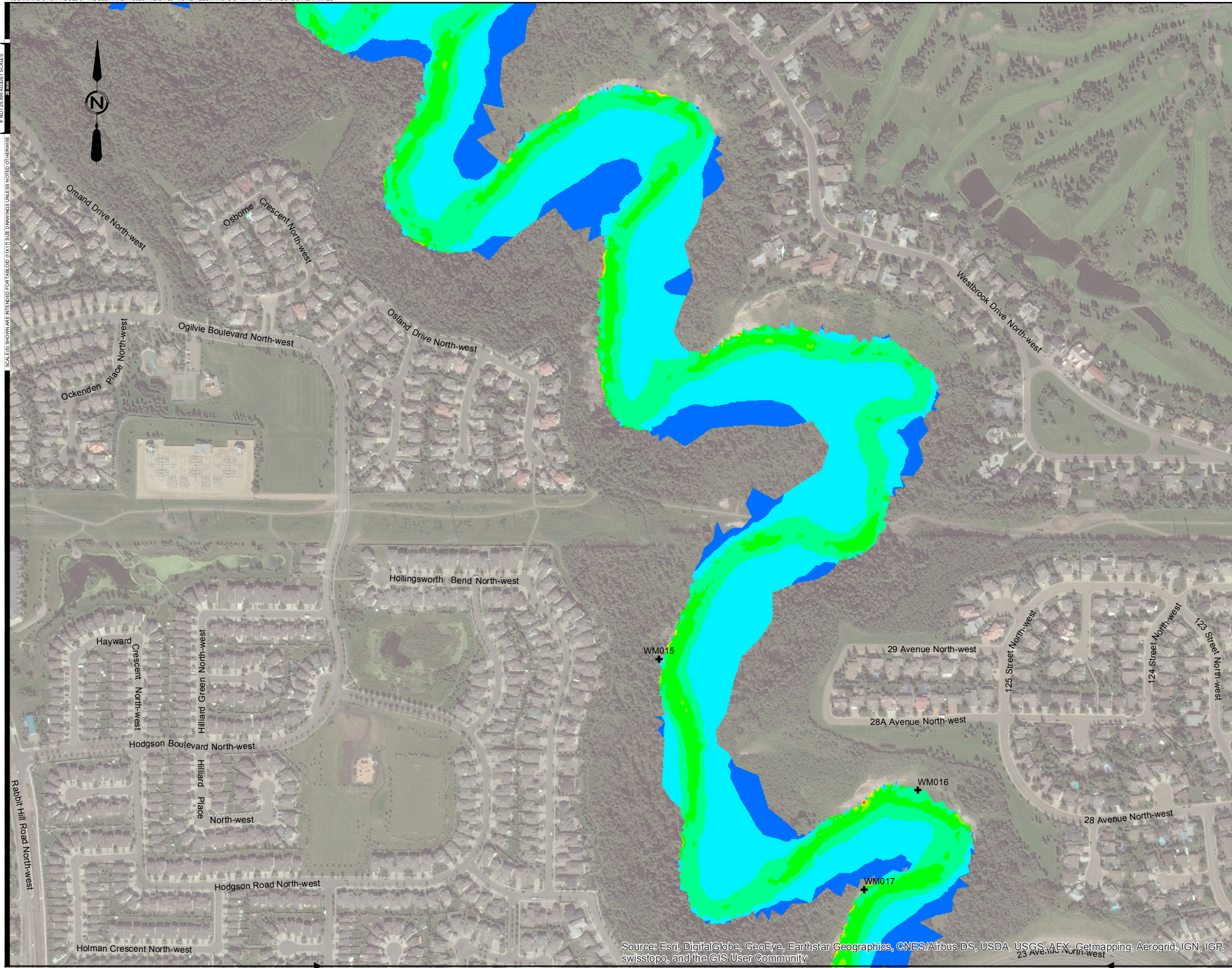
FUTURE DEVELOPMENT DISCHARGE RATE
5.0 L/s/ha - 100 YEAR FLOOD VELOCITY

AE PROJECT No.	2016-3785
SCALE	1:5,000
APPROVED DATE	2017 MARCH
REV DESCRIPTION	ISSUED FOR REPORT

SCALE(S) SHOWN ARE INTENDED FOR TABLED (1:1) SIZE DRAWINGS UNLESS NOTED OTHERWISE

SCALE(S) SHOWN ARE INTENDED FOR TABLED (1:1) SIZE DRAWINGS UNLESS NOTED OTHERWISE

P:\2016\3785\00_Blackmud_Whitemud\Working_Dwg\010_GIS\Acot\map02_WaterResources\FutureDevelopment_Velocity.mxd
DATE: 3/21/2017



Legend:

- + Erosion Site
- Velocity (5.0 L/s/ha)**
- >3.5 - 4.0
- >3.0 - 3.5
- >2.5 - 3.0
- >2.0 - 2.5
- >1.5 - 2.0
- >1.0 - 1.5
- >0.5 - 1.0
- >0.0 - 0.5

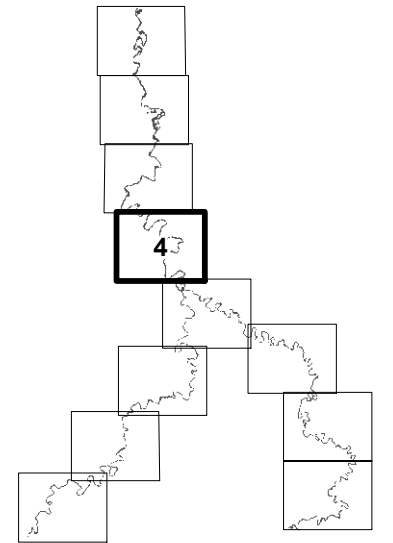


FIGURE No. C-26

BLACKMUD/WHITEMUD CREEK
WATERSHED MANAGEMENT STUDY

FUTURE DEVELOPMENT DISCHARGE RATE
5.0 L/s/ha - 100 YEAR FLOOD VELOCITY

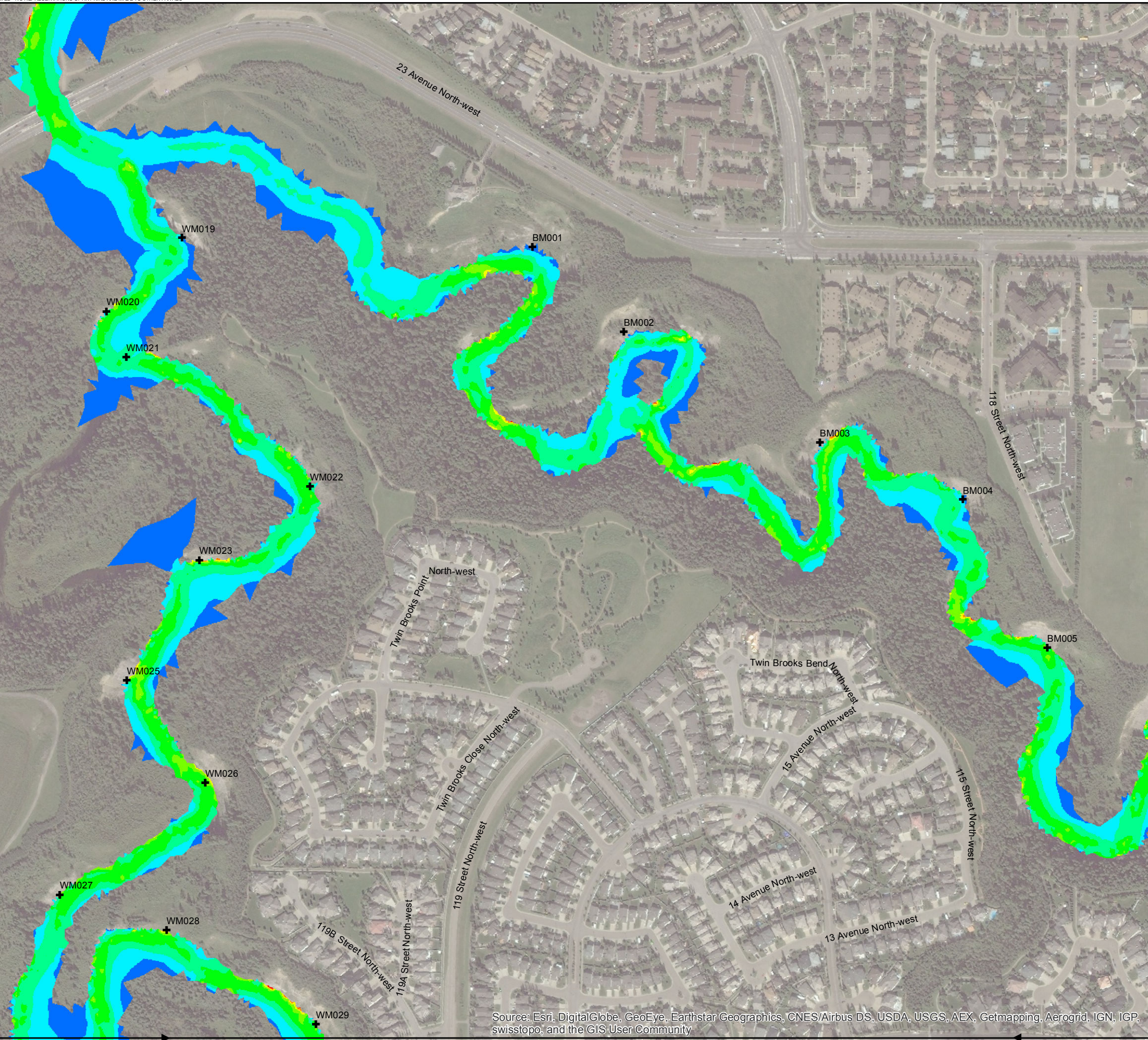
AE PROJECT No.	2016-3785
SCALE	1:5,000
APPROVED DATE	2017 MARCH
REV DESCRIPTION	ISSUED FOR REPORT

SCALE(S) SHOWN ARE INTENDED FOR TABLET (11X17) SIZE DRAWINGS UNLESS NOTED OTHERWISE

SCALE(S) SHOWN ARE INTENDED FOR TABLET (11X17) SIZE DRAWINGS UNLESS NOTED OTHERWISE

May Common North-west

P:\2016\76500_Blackmud_Whitemud\Working_Dwg\010_GIS\Acrobat\02_WaterResources\xxx_FutureDevelopment_Velocity.mxd
DATE: 3/21/2017



- Legend:
- + Erosion Site
 - Velocity (5.0 L/s/ha)**
 - >3.5 - 4.0
 - >3.0 - 3.5
 - >2.5 - 3.0
 - >2.0 - 2.5
 - >1.5 - 2.0
 - >1.0 - 1.5
 - >0.5 - 1.0
 - >0.0 - 0.5

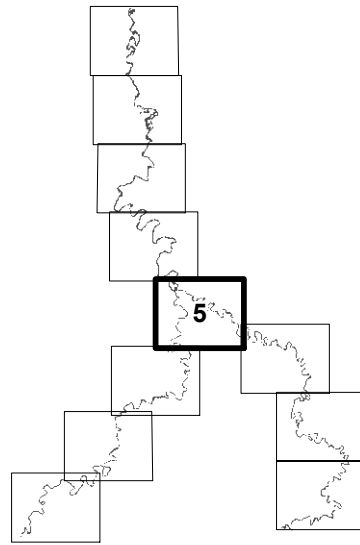


FIGURE No. C-27
BLACKMUD/WHITEMUD CREEK
WATERSHED MANAGEMENT STUDY
FUTURE DEVELOPMENT DISCHARGE RATE
5.0 L/s/ha - 100 YEAR FLOOD VELOCITY

AE PROJECT No.	2016-3785
SCALE	1:5,000
APPROVED	
DATE	2017 MARCH
REV	
DESCRIPTION	ISSUED FOR REPORT

Source: Esri, DigitalGlobe, GeoEye, Earthstar Geographics, CNES/Airbus DS, USDA, USGS, AEX, Getmapping, Aerogrid, IGN, IGP, swisstopo, and the GIS User Community

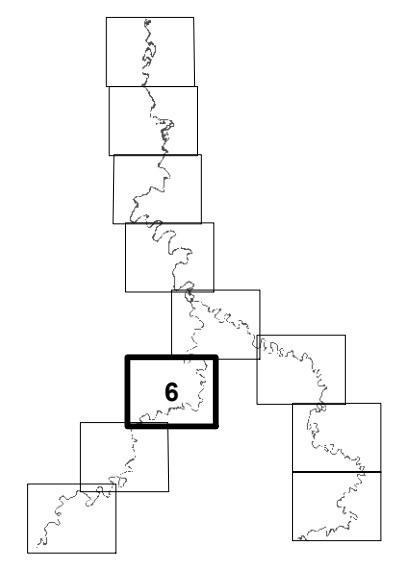
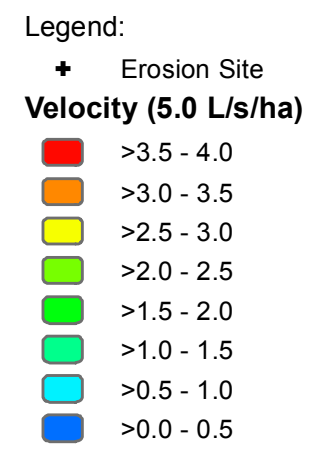
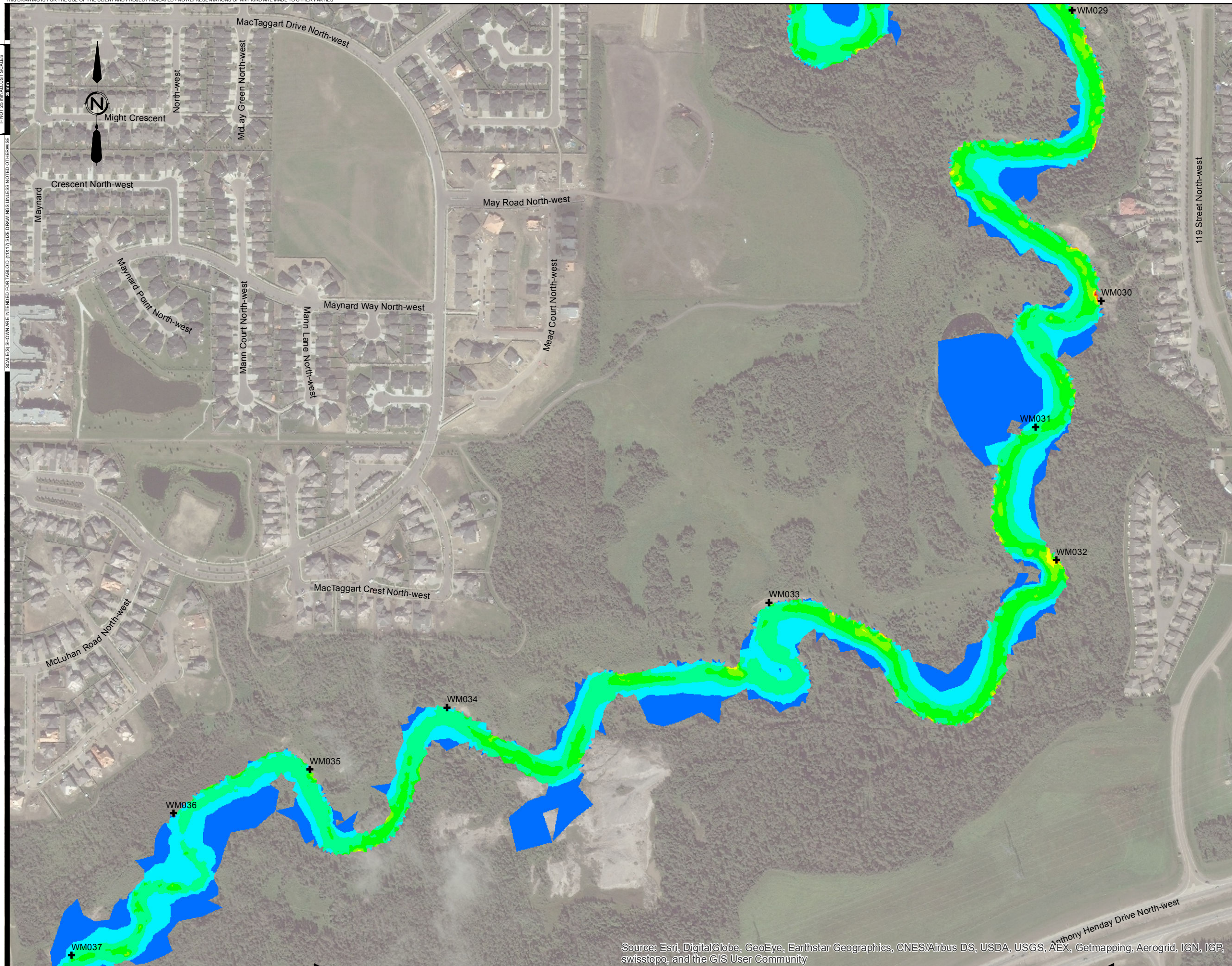


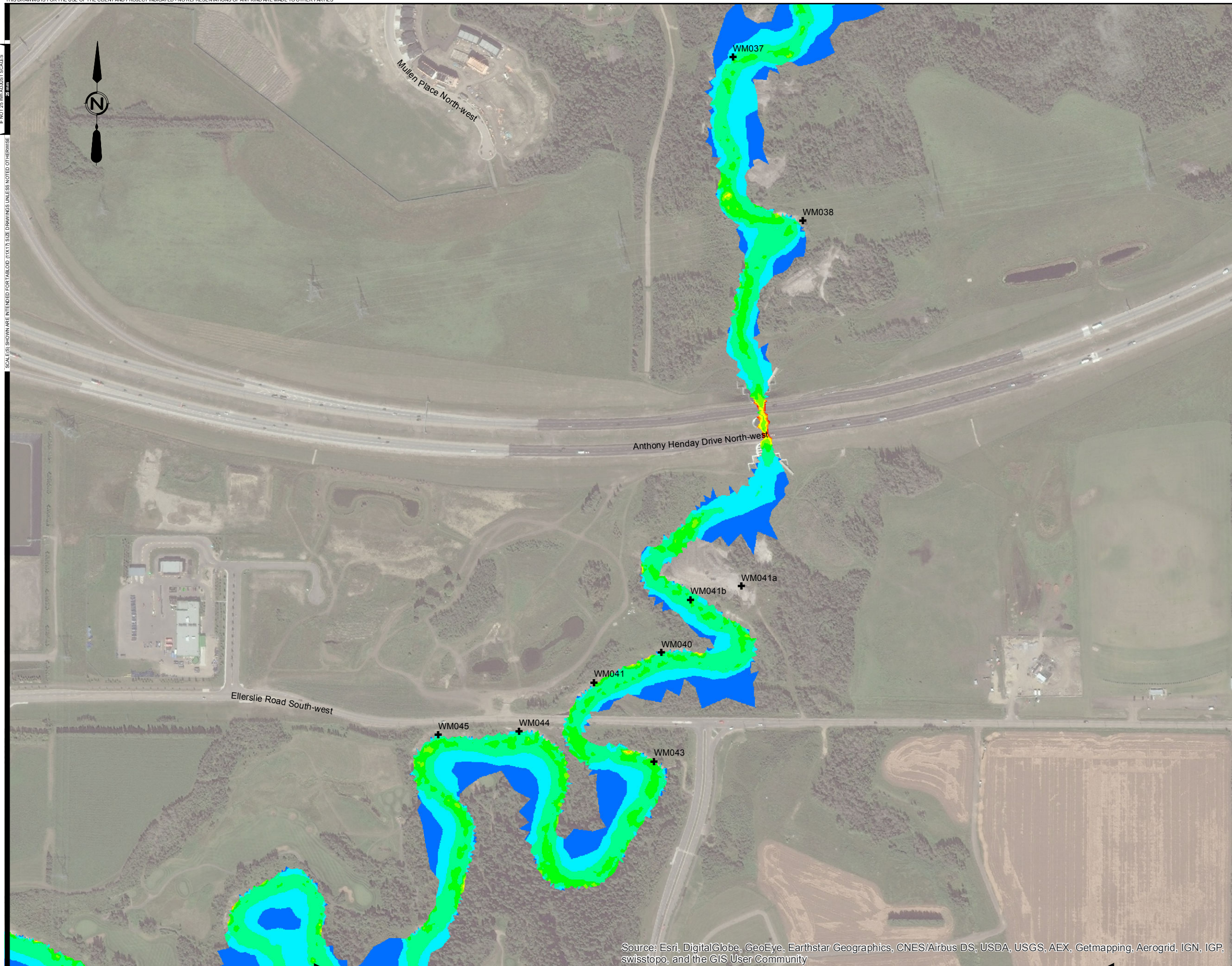
FIGURE No. C-28
 BLACKMUD/WHITEMUD CREEK
 WATERSHED MANAGEMENT STUDY
 FUTURE DEVELOPMENT DISCHARGE RATE
 5.0 L/s/ha - 100 YEAR FLOOD VELOCITY

AE PROJECT No.	2016-3785
SCALE	1:5,000
APPROVED DATE	2017 MARCH
REV DESCRIPTION	ISSUED FOR REPORT

SCALE(S) SHOWN ARE INTENDED FOR TABLED (11X17) SIZE DRAWINGS UNLESS NOTED OTHERWISE

IF NOT 24" x 36" AS SHOWN SCALES

P:\2018\3785\00_Blackmud_Whitemud\Working_Dwg\010_GIS\Acad\p02_WaterResources\xxx_FutureDevelopment_Velocity.mxd
DATE: 3/21/2017



Legend:

- + Erosion Site
- Velocity (5.0 L/s/ha)**
- >3.5 - 4.0
- >3.0 - 3.5
- >2.5 - 3.0
- >2.0 - 2.5
- >1.5 - 2.0
- >1.0 - 1.5
- >0.5 - 1.0
- >0.0 - 0.5

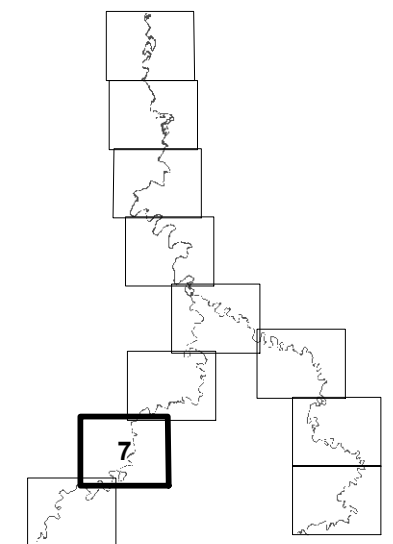


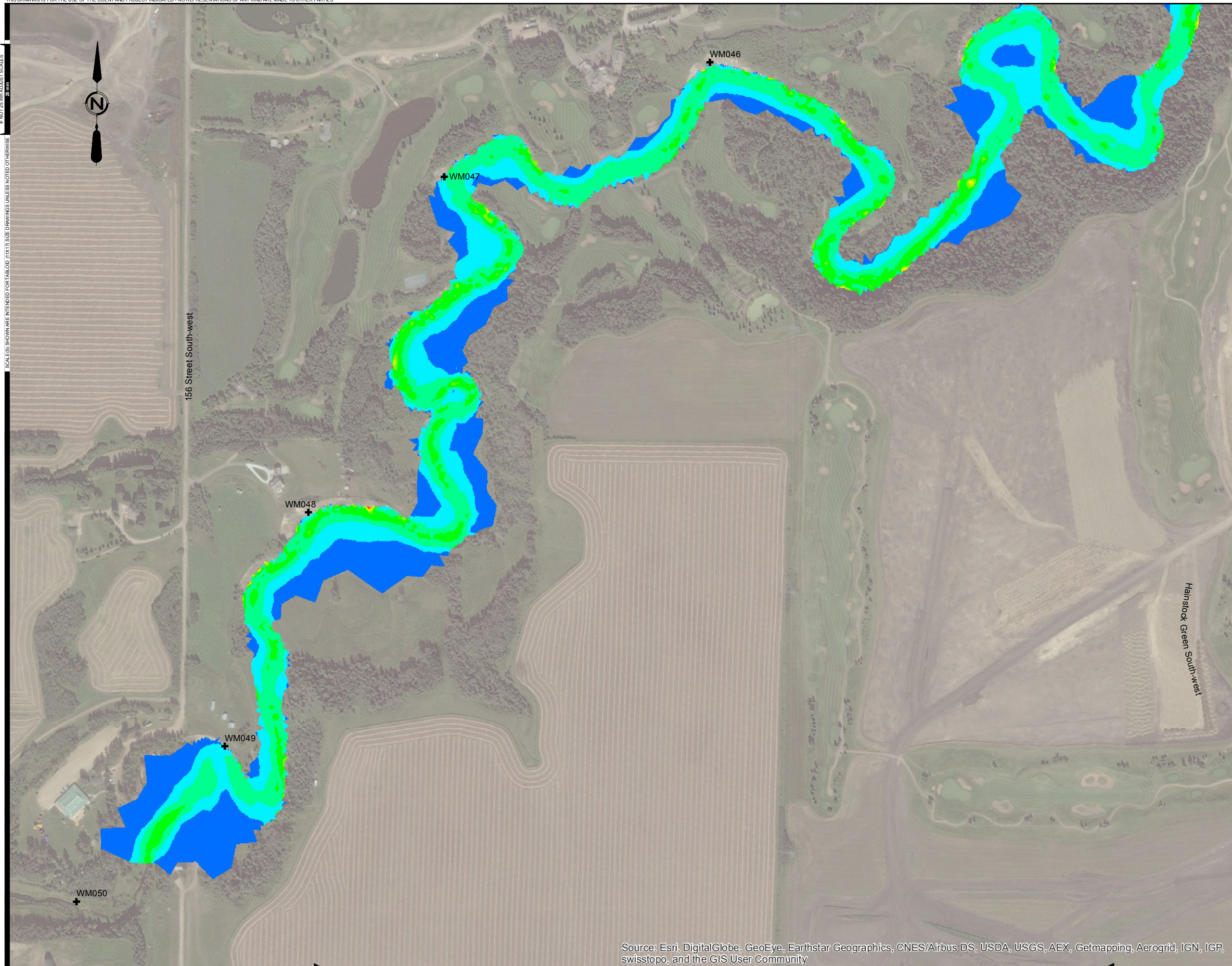
FIGURE No. C-29

BLACKMUD/WHITEMUD CREEK
WATERSHED MANAGEMENT STUDY

FUTURE DEVELOPMENT DISCHARGE RATE
5.0 L/s/ha - 100 YEAR FLOOD VELOCITY

AE PROJECT No.	2016-3785
SCALE	1:5,000
APPROVED	
DATE	2017 MARCH
REV	
DESCRIPTION	ISSUED FOR REPORT

Source: Esri, DigitalGlobe, GeoEye, Earthstar Geographics, CNES/Airbus DS, USDA, USGS, AEX, Getmapping, Aerogrid, IGN, IGP, swisstopo, and the GIS User Community



Legend:

- + Erosion Site
- Velocity (5.0 L/s/ha)**
- >3.5 - 4.0
- >3.0 - 3.5
- >2.5 - 3.0
- >2.0 - 2.5
- >1.5 - 2.0
- >1.0 - 1.5
- >0.5 - 1.0
- >0.0 - 0.5

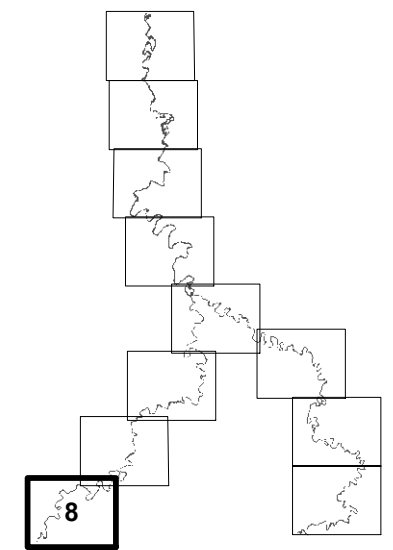
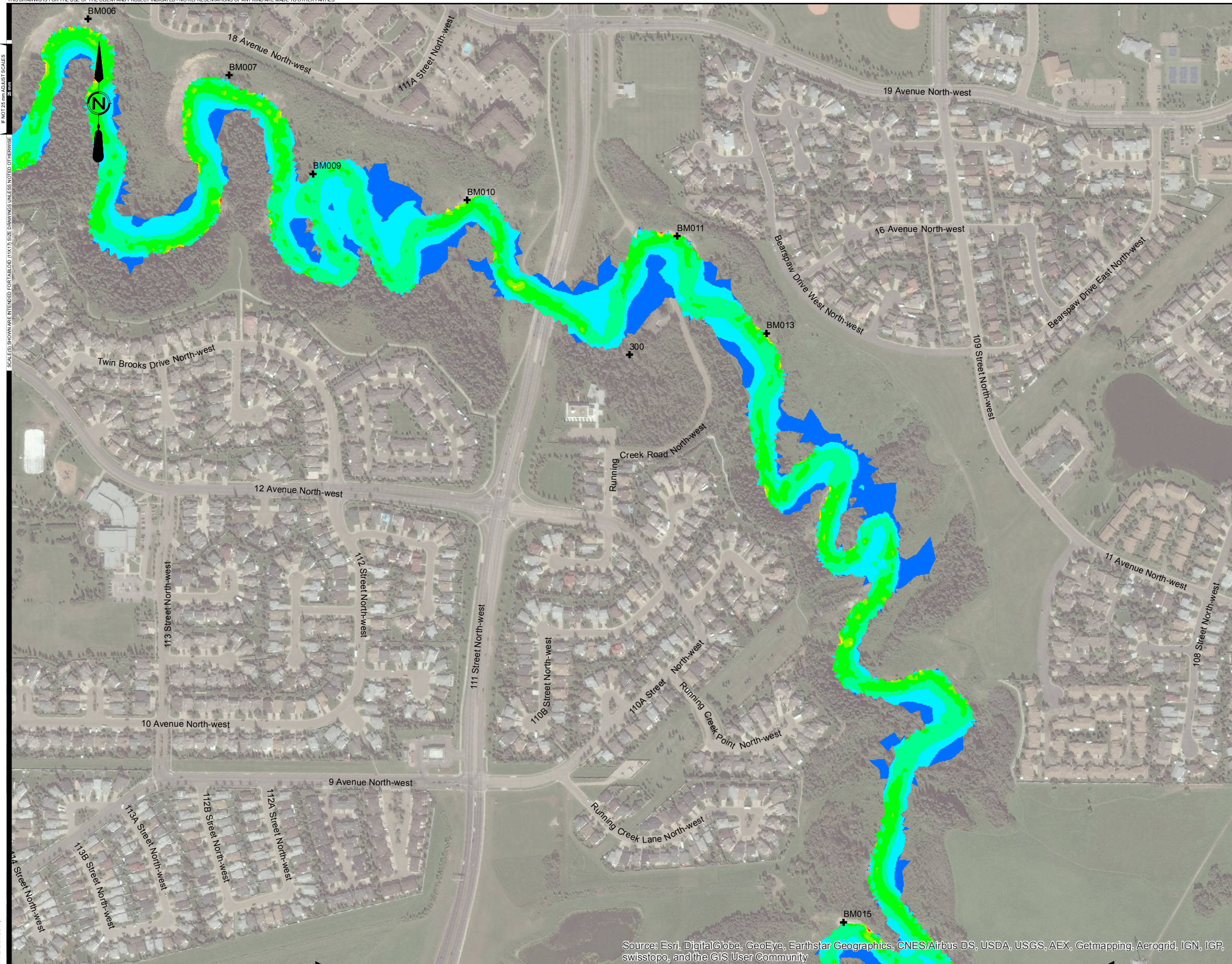


FIGURE No. C-30
 BLACKMUD/WHITEMUD CREEK
 WATERSHED MANAGEMENT STUDY
 FUTURE DEVELOPMENT DISCHARGE RATE
 5.0 L/s/ha - 100 YEAR FLOOD VELOCITY

AE PROJECT No.	2016-3785
SCALE	1:5,000
APPROVED DATE	2017 MARCH
REV DESCRIPTION	ISSUED FOR REPORT

THIS DRAWING IS FOR THE USE OF THE CLIENT AND PROJECT INDICATED - NO REPRESENTATIONS OF ANY KIND ARE MADE TO OTHER PARTIES

SCALE(S) SHOWN ARE INTENDED FOR TABLET (11X17) SIZE DRAWINGS UNLESS NOTED OTHERWISE
IF NOT 24" x 36" AS SHOWN SCALES



- Legend:
- + Erosion Site
 - Velocity (5.0 L/s/ha)**
 - >3.5 - 4.0
 - >3.0 - 3.5
 - >2.5 - 3.0
 - >2.0 - 2.5
 - >1.5 - 2.0
 - >1.0 - 1.5
 - >0.5 - 1.0
 - >0.0 - 0.5

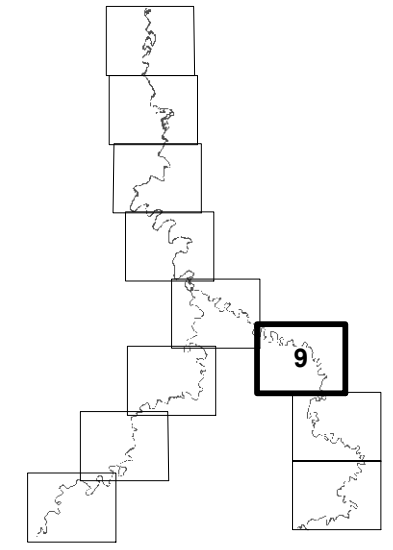


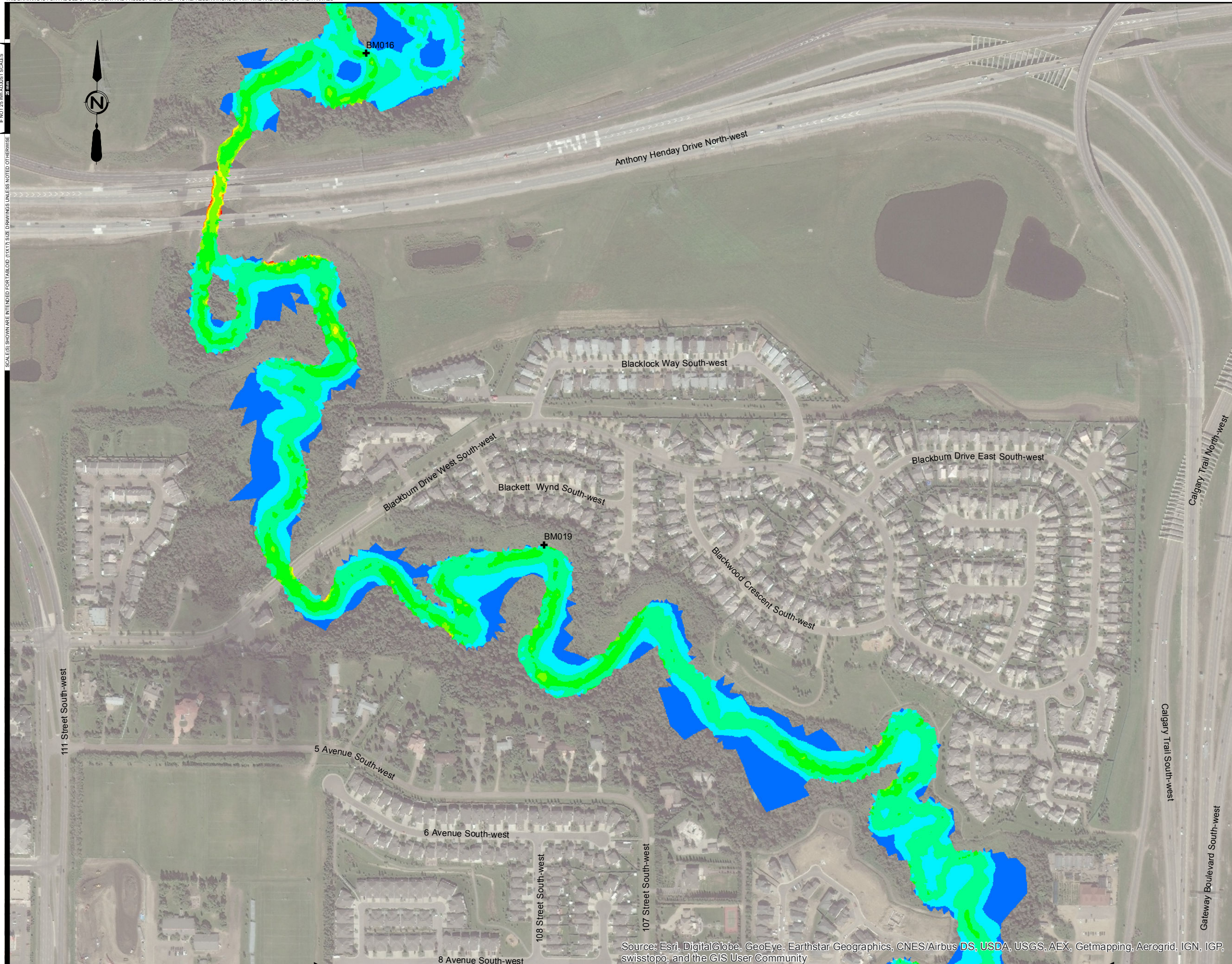
FIGURE No. C-31
 BLACKMUD/WHITEMUD CREEK
 WATERSHED MANAGEMENT STUDY
 FUTURE DEVELOPMENT DISCHARGE RATE
 5.0 L/s/ha - 100 YEAR FLOOD VELOCITY

AE PROJECT No.	2016-3785
SCALE	1:5,000
APPROVED	
DATE	2017 MARCH
REV	
DESCRIPTION	ISSUED FOR REPORT

Source: Esri, DigitalGlobe, GeoEye, Earthstar Geographics, CNES/Airbus DS, USDA, USGS, AEX, Getmapping, Aerogrid, IGN, IGP, swisstopo, and the GIS User Community

P:\2016\3785\00_Blackmud_Whitemud\Working_Dwg\010_GIS\Acrobat\02_WaterResources\xxx_FutureDevelopment_Velocity.mxd
 DATE: 3/21/2017

SCALE(S) SHOWN ARE INTENDED FOR TABLED (11X17) SIZE DRAWINGS UNLESS NOTED OTHERWISE
 IF NOT 24" x 36" AS SHOWN SCALES



Legend:

- + Erosion Site
- Velocity (5.0 L/s/ha)**
- >3.5 - 4.0
- >3.0 - 3.5
- >2.5 - 3.0
- >2.0 - 2.5
- >1.5 - 2.0
- >1.0 - 1.5
- >0.5 - 1.0
- >0.0 - 0.5

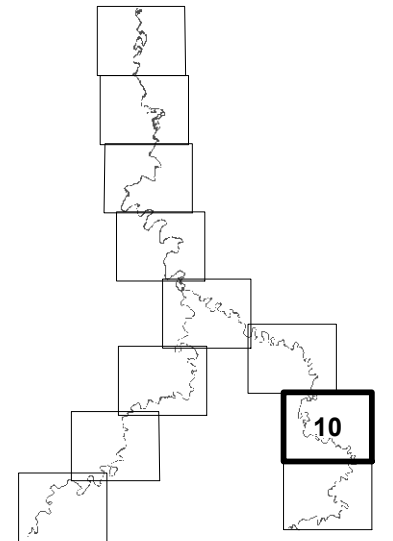


FIGURE No. C-32

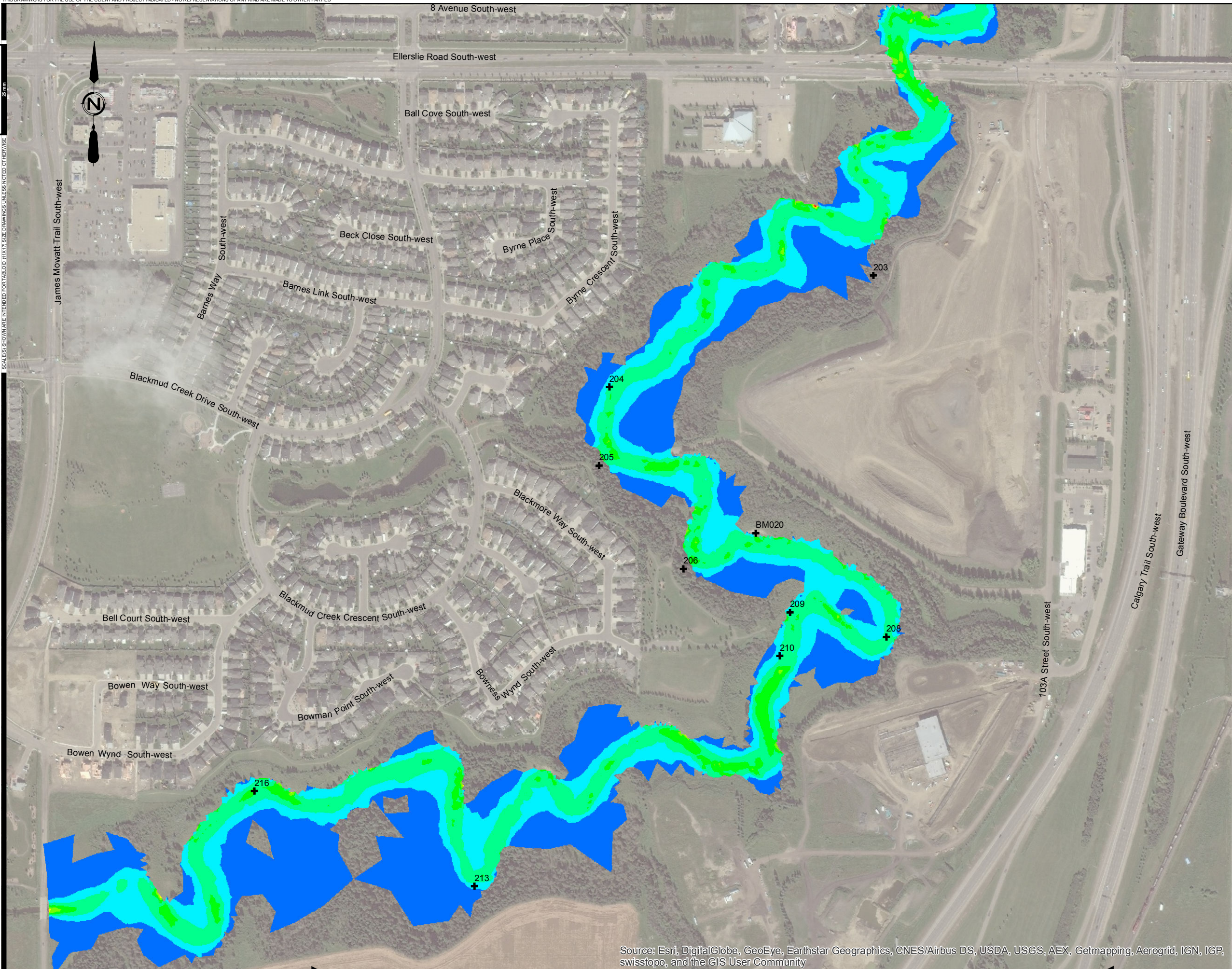
BLACKMUD/WHITEMUD CREEK
 WATERSHED MANAGEMENT STUDY

FUTURE DEVELOPMENT DISCHARGE RATE
 5.0 L/s/ha - 100 YEAR FLOOD VELOCITY

AE PROJECT No.	2016-3785
SCALE	1:5,000
APPROVED DATE	2017 MARCH
REV	
DESCRIPTION	ISSUED FOR REPORT

SCALES (S) SHOWN ARE INTENDED FOR TABLED (1:1) SIZE DRAWINGS UNLESS NOTICED OTHERWISE

P:\2016\3785\00_Blackmud_Whitemud\Working_Dwg\010_GIS\Acrobat\02_WaterResources\xxxx_FutureDevelopment_Velocity.mxd
DATE: 3/21/2017



- Legend:
- + Erosion Site
 - Velocity (5.0 L/s/ha)**
 - >3.5 - 4.0
 - >3.0 - 3.5
 - >2.5 - 3.0
 - >2.0 - 2.5
 - >1.5 - 2.0
 - >1.0 - 1.5
 - >0.5 - 1.0
 - >0.0 - 0.5

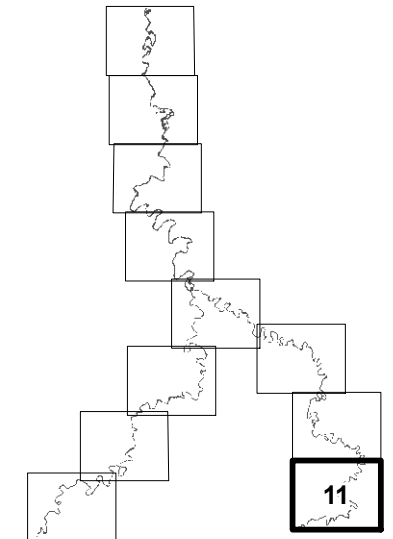


FIGURE No. C-33
 BLACKMUD/WHITEMUD CREEK
 WATERSHED MANAGEMENT STUDY
 FUTURE DEVELOPMENT DISCHARGE RATE
 5.0 L/s/ha - 100 YEAR FLOOD VELOCITY

AE PROJECT No.	2016-3785
SCALE	1:5,000
APPROVED	
DATE	2017 MARCH
REV	
DESCRIPTION	ISSUED FOR REPORT

Source: Esri, DigitalGlobe, GeoEye, Earthstar Geographics, CNES/Airbus DS, USDA, USGS, AEX, Getmapping, Aerogrid, IGN, IGP, swisstopo, and the GIS User Community