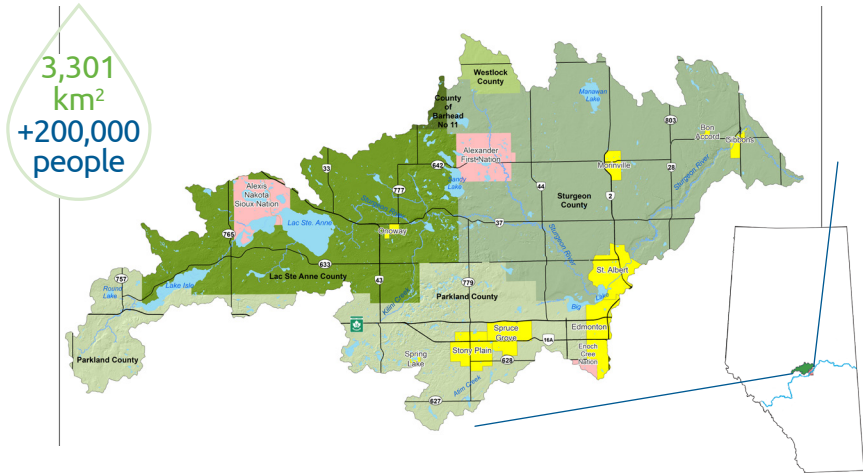


About the Sturgeon River Watershed Alliance (SRWA)

- A municipally-led watershed stewardship group that works in partnership with the North Saskatchewan Watershed Alliance (NSWA).
- Guided by a Steering Committee of elected officials and a Technical Advisory Committee of technical staff and volunteers.



Priority Issues in the Watershed

- Poor water quality due to excess nutrient and sediment inputs
- Low water levels in late summer and fall in rivers, creeks and lakes
- Impacts from extensive agriculture and rapid urbanization
- Loss of wetlands, riparian areas and other environmentally sensitive areas

Watershed Planning

Watershed Health Indicators

- Water quantity
- Water quality
- Land use
- Biological health



Watershed Health Score =Fair



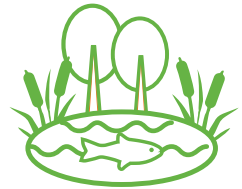
Key Outcomes



Informed and aligned policies and plans



Access to safe, secure drinking water



Healthy aquatic ecosystems



Reliable, quality water supply for the economy



Wise land-use that considers resilience



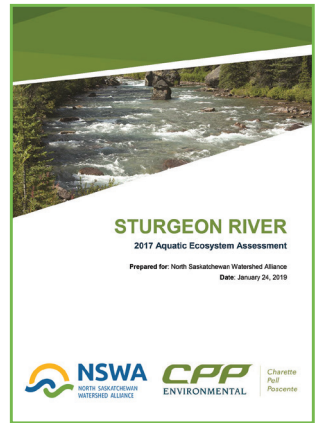
Resident and stakeholder support for Management Plan

Technical Reports

Several technical reports have been completed to address data gaps within the Sturgeon River Watershed. These include:

- Water Supply and Demand
- Groundwater Overview and Condition
- Natural Areas Mapping
- Riparian Areas Assessment
- Aquatic Ecosystem Health & Water Quality Assessment
- State of Lac St. Anne and Isle Lake Watersheds

To read these reports in more detail, please see:
<https://www.nswa.ab.ca/the-sturgeon-river-watershed->



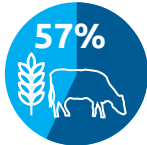
Protecting riparian areas and wetlands are one of the priorities for the SRWA. These vital transition areas between land and water mitigate the impacts of floods and drought and preserve water quality.

Prairie-fed watershed

The Sturgeon River is a small, precipitation and groundwater-fed prairie river. This means that whatever happens on the surrounding land will have large impacts on the quality and quantity of water in the watershed.



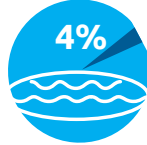
Watershed Land Cover



Agricultural



Natural



Open
Water



Wetland



Human
Development

The Sturgeon River Watershed includes:

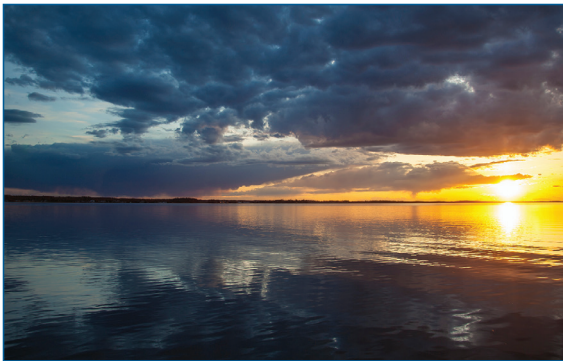
- Sturgeon River
- Atim Creek
- Carrot Creek
- Kilini Creek
- Little Egg Creek
- Riviere-Qui-Barre
- Big Lake
- Isle Lake
- Lac Ste. Anne
- Matchayaw Lake
- Manawan Lake
- Sandy Lake



Chickakoo Lake. Photo: Bill Trout

Our SRWA Partners

Lac St. Anne County
Parkland County
Sturgeon County
City of Edmonton
City of Spruce Grove
City of St. Albert
Town of Gibbons
Town of Morinville
Town of Onoway
Town of Stony Plain
Village of Alberta Beach
Summer Villages of Lac
Ste. Anne & County East
Alexander First Nation
Alexis Nakota Sioux Nation
Métis Nation of Alberta



Above: Lac Ste. Anne, *Bill Trout*
Cover: Mouth of Sturgeon River, *Bill Trout*

Alberta Conservation Association
Alberta Environment and Parks
Big Lake Environmental Support Society
Wagner Natural Area Society

To find out more, please contact:

587-525-6820 | water@nswa.ab.ca



THE STURGEON RIVER WATERSHED ALLIANCE

