



## IN STREAM NEWSLETTER JULY 2022

Have you had a #glassofthesask today?



Join **EPCOR** and **NSWA** in raising a glass (of tap water!) to Edmonton's locally-owned restaurants and to Edmonton's beautiful river and surrounding watershed. In the Edmonton area we enjoy excellent drinking water thanks to the work of EPCOR. And that water comes from the North Saskatchewan River! Learn more about supporting local restaurants with **#glassofthesask** this summer!

Follow **NSWA** on social media so you won't miss out on promotions and prizes!

[#glassofthesask](#)

## SUMMER ACROSS THE WATERSHED





NSWA summer staff have been busy attending events across the watershed - Watershed Stewardship Group events, school and library programs, farmers markets and more!

**Lac Ste Anne** is known to the Nakota Sioux Nation as *Wakamne* (God's Lake) and is the site of an annual spiritual pilgrimage. Pope Francis attended this year's pilgrimage in the spirit of reconciliation between the Indigenous Peoples of Canada and the Catholic Church. Throughout July, our NSW staff have been happy to assist the **Alberta Lake Management Society** with increased public health water sampling at the site before this historic visit.

Another highlight was working with the **Wizard Lake Watershed & Lake Stewardship Association (WLWLSA)** to host a program for over 80 students of the New Humble Community School for a day of watershed learning! Our watershed model is a great tool to teach people of all ages how water, nutrients and pollutants move through our environment, and the ways that we can protect our precious water resources.

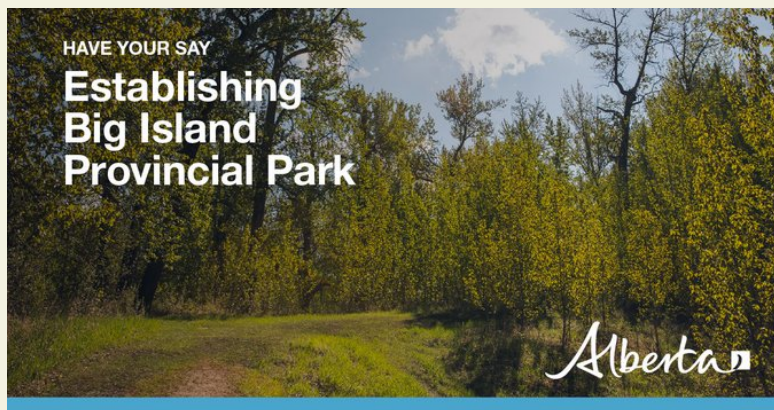
Jill and Kaila learned something themselves, as the kids at New Humble School showed them around their school farm, vegetable garden and chicken coop. They also had a chance to check out two of the Floating Islands on Wizard lake, a fantastic project initiated by Blake and Linda of the WLWLSA. The floating islands provide a variety of benefits, including waterfowl habitat, erosion prevention and pollutant filtration.

We also joined the **Wabamun Watershed Management Council** at the Farmer's market and at a Watercraft Inspection Event in July.

We will be out at other events in August - hope to see you in the watershed!

---

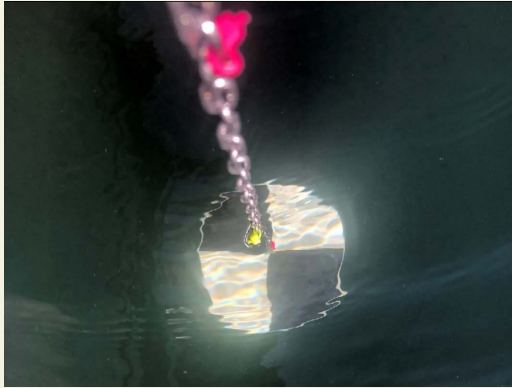
## HAVE YOUR SAY - DEADLINE AUGUST 21



In partnership with the Enoch Cree Nation and the City of Edmonton, Alberta Environment and Parks is seeking feedback on the proposed establishment of Big Island Provincial Park, a 68 hectare parcel of Crown land in southwest Edmonton along the North Saskatchewan River. Complete the survey before August 21 2022. For more information and to give your feedback, check the link below.

## BIG ISLAND INFORMATION

### Watershed Stewardship Group Project Samples Over 40 Lakes!



A shout out to the **Mayatan Lake Management Association (MLMA)**, **Alberta Lake Management Society (ALMS)** and **David Trew** (former NSWA Executive Director) for the work on a comprehensive study on small lakes in Parkland County. This survey is a collaborative effort supported by several partners, including ALMS, MLMA, the Land Stewardship Centre of Canada (LSCC), the North Saskatchewan Watershed Alliance (NSWA), the Stony Plain Fish and Game Association (SPFGA), and the Department of Earth Sciences, University of Alberta.

In the summer of 2021, over 40 lakes were sampled, and this summer they are hoping to get out to over 50 small lakes in the Carvel Pitted Delta area, west of Edmonton. There are a number of lakes in that region with excellent water quality and unique features. You can read more about this project on the ALMS website. Stay tuned for more lake information to come!

## Lakes Report

Don't forget to Clean Drain and Dry Your Gear!



As you are out enjoying the summer weather on the River or at a lake, don't forget to **CLEAN DRAIN and DRY** your gear! This includes your boat, life jackets, coolers, bait buckets and other equipment. This helps prevent invasive species from spreading from one body of water to another and is especially important if you are travelling from another province.

NSWA staff were out at the Wabamun Lake Watercraft Inspection event - check out this [article!](#)

And remember to Pull the Plug - in Alberta is illegal to transport your watercraft with the drain plug still in place.

Keep Alberta Lakes and Rivers free from Invasive Species!  
Learn more:

Clean Drain Dry

## VERMILION RIVER WATERSHED ALLIANCE



Our NSWA staff hosted the **Buggin' Out Down by the River** event, alongside the **Vermilion**

River Watershed Alliance (VRWA) and the Vermilion Public Library on July 22<sup>nd</sup>. This was our second year helping to host this event and the kids had a great time learning about watersheds, the Vermilion River, and pond dipping all morning long.

---

## BLUE GREEN ALGAE (Cyanobacteria) ADVISORIES

Alberta Health Services has a listing of lakes with Blue Green Algae (cyanobacteria) advisories.

Blue-green algae (cyanobacteria) is naturally occurring, and often become visible when weather conditions are calm. Appearing like scum, grass clippings, fuzz or globs on the surface of water, blue-green algae (cyanobacteria) can be blue-green, greenish-brown, brown, and/or pinkish-red, and often smell musty or grassy.

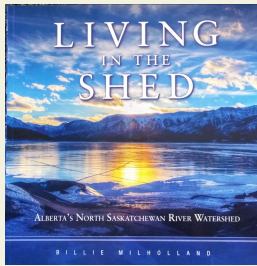
Advisories are in effect until rescind notices are issued.

People or animals who come in contact with visible blue-green algae (cyanobacteria), or who ingest water containing blue-green algae (cyanobacteria), may experience a variety of symptoms including a rash, fever, sore throat .

More information can be found on the [Alberta Health Services webpage](#).

---

## LIVING IN THE SHED HAS GONE DIGITAL!



A digital copy of NSWA's book Living in the Shed is now available through the University of Alberta's internet archive web portal ( link below).

We greatly appreciate all of the work of the **University of Alberta Library and Archives staff** to enable this book to be made available to a worldwide audience!

If you would like a hard copy of the book we still have some available for purchase at our office for \$20 each (cash only please). Email us at [water@nswa.ab.ca](mailto:water@nswa.ab.ca) to arrange a time to pick up a copy.

[Living in the Shed](#)

---

## OTHER WATERSHED RESOURCES

The **Environmental Law Centre** posted articles to their website: [Water Law in Alberta: A Comprehensive Guide](#) and another on [A Focus on Forest Management Agreements](#).

Check out this rating of the [Natural Areas for various Canadian cities](#) - Edmonton has some definite advantages and highlights including the proposed development of Canada's first urban Indigenous cultural site at Whitemud Park.

A website with information on [Alberta's Native Trout](#) provides information and tools to help protect and support these important species.

Check out the [NSWA DISCOVERS](#) section on our website with watershed resources and activities for adults and children. There are many activities to encourage watershed learning for your family.

---



## SUPPORT THE WORK OF NSWA

The NSWA accepts donations through the **ATB Cares** program which matches 15% of every dollar donated to Alberta-based charities through their **ATB Cares Web Portal**. It is easy to use and automatically issues a charitable tax receipt for donations \$10 and over.

For more information on supporting our watershed projects go to our [DONATE](#) webpage.



[Facebook](#)



[Twitter](#)



[Instagram](#)



[Website](#)



[Email](#)



[LinkedIn](#)

*Copyright © \*|2022\* \*|NSWA|\*, All rights reserved.*

**Our mailing address is:**

202 9440 49 Street Edmonton, Alberta

Email [water@nswa.ab.ca](mailto:water@nswa.ab.ca)

Want to change how you receive these emails?

You can [update your preferences](#) or [unsubscribe from this list](#).