

# LAND-USE FRAMEWORK

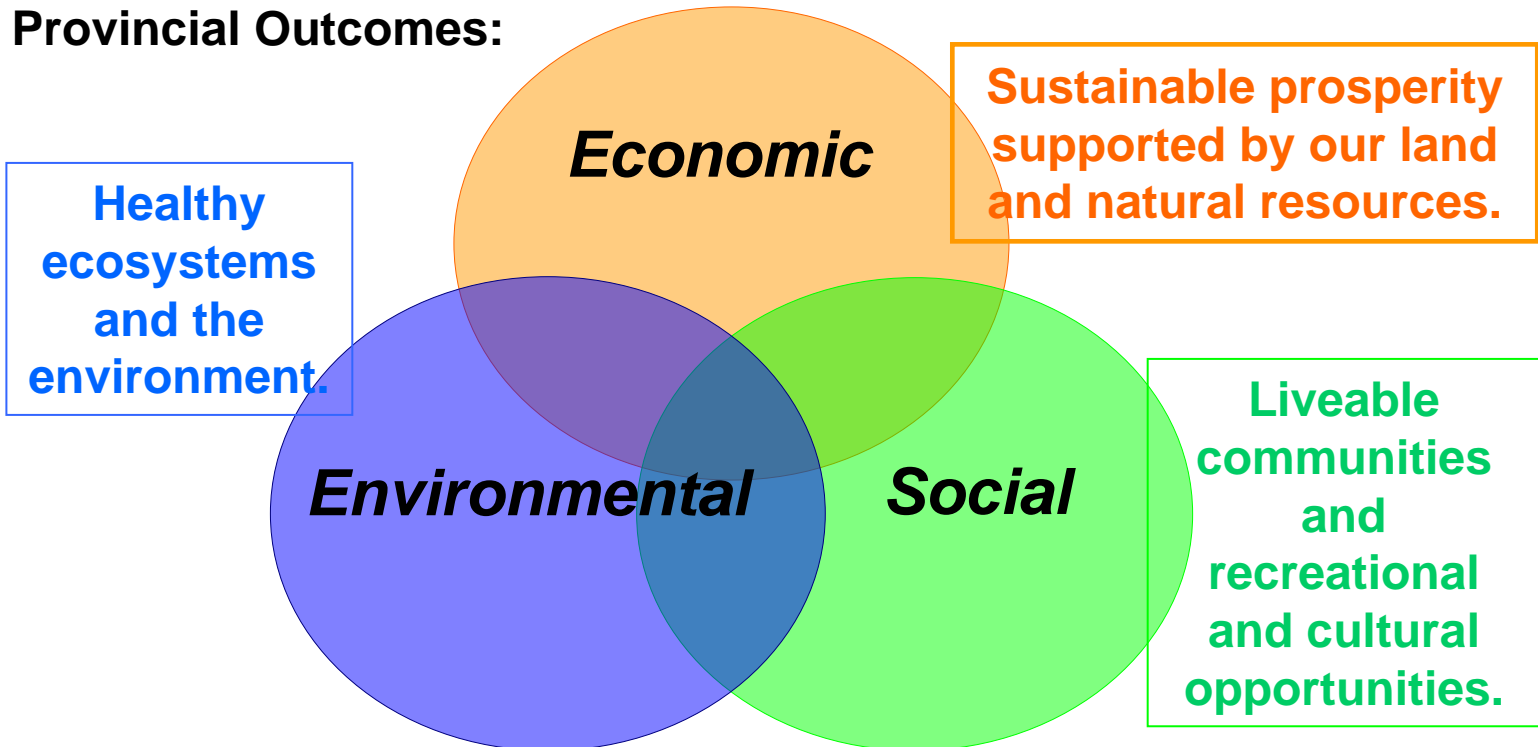


WPAC Forum  
June 22, 2010

Kate Rich  
Alberta Environment

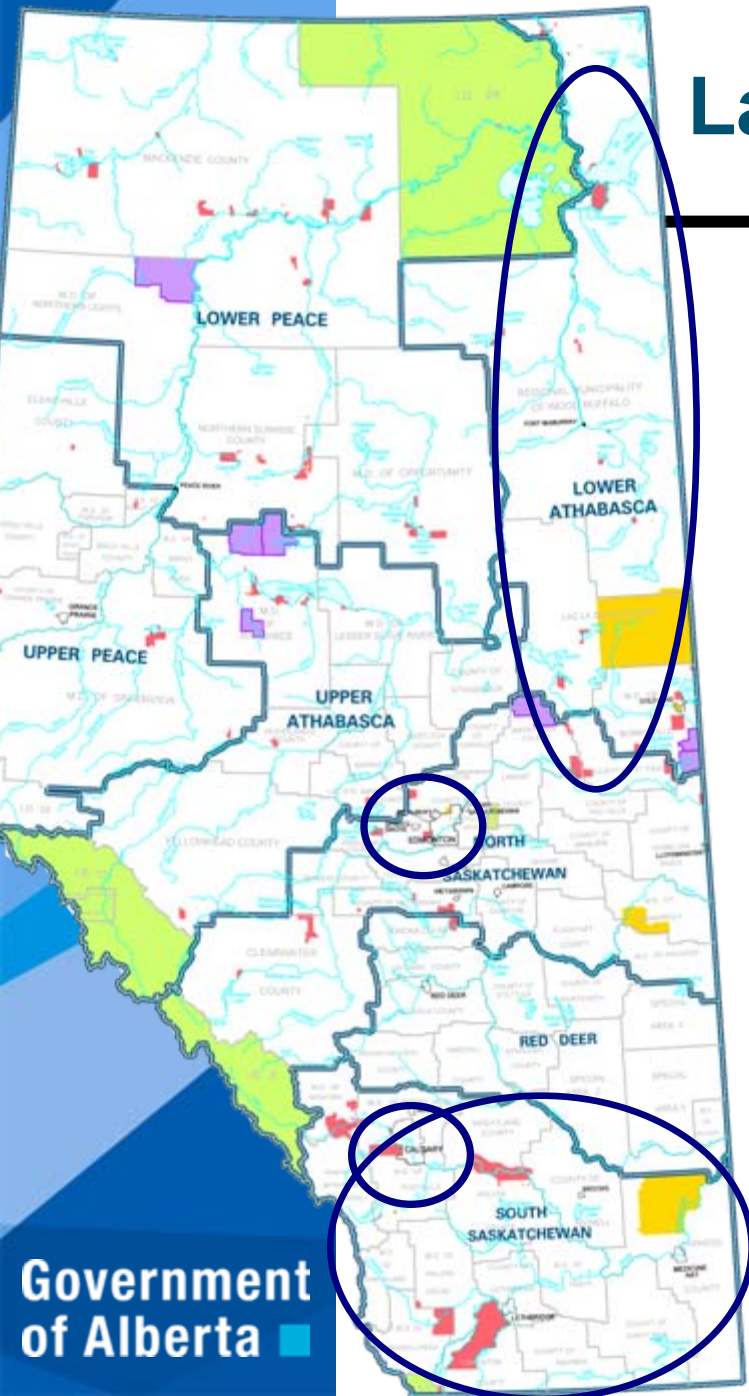
# Land-Use Framework

## Provincial Outcomes:



- Provides provincial leadership for sustainable development
- Balances environmental, economic and social considerations
- Heightens integration and coordination of provincial policy
- Aligns planning and decision-making
- Encourages stewardship and conservation

# Land-use Framework Strategies



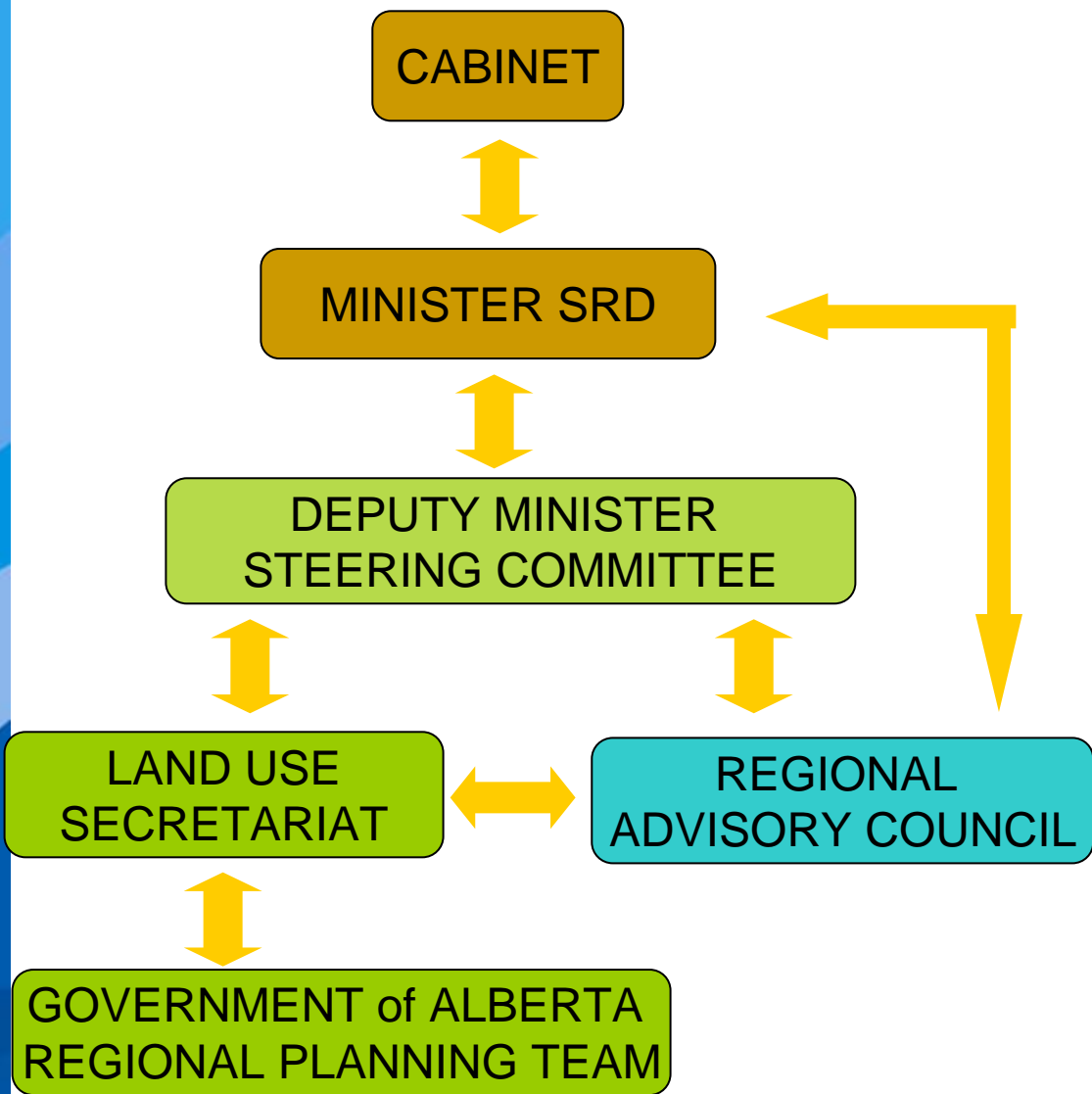
1. Develop seven regional plans.
2. Create a Land-use Secretariat and establish Regional Advisory Councils.
3. Cumulative effects management to manage the impacts of development on land, water and air.
4. Develop conservation and stewardship strategy on private and public lands.
5. Promote efficient use of land.
6. Establish an information, monitoring and knowledge system to contribute to continuous improvement of land-use planning and decision-making.
7. Inclusion of Aboriginal peoples in land-use planning.

# Regional Planning Overview

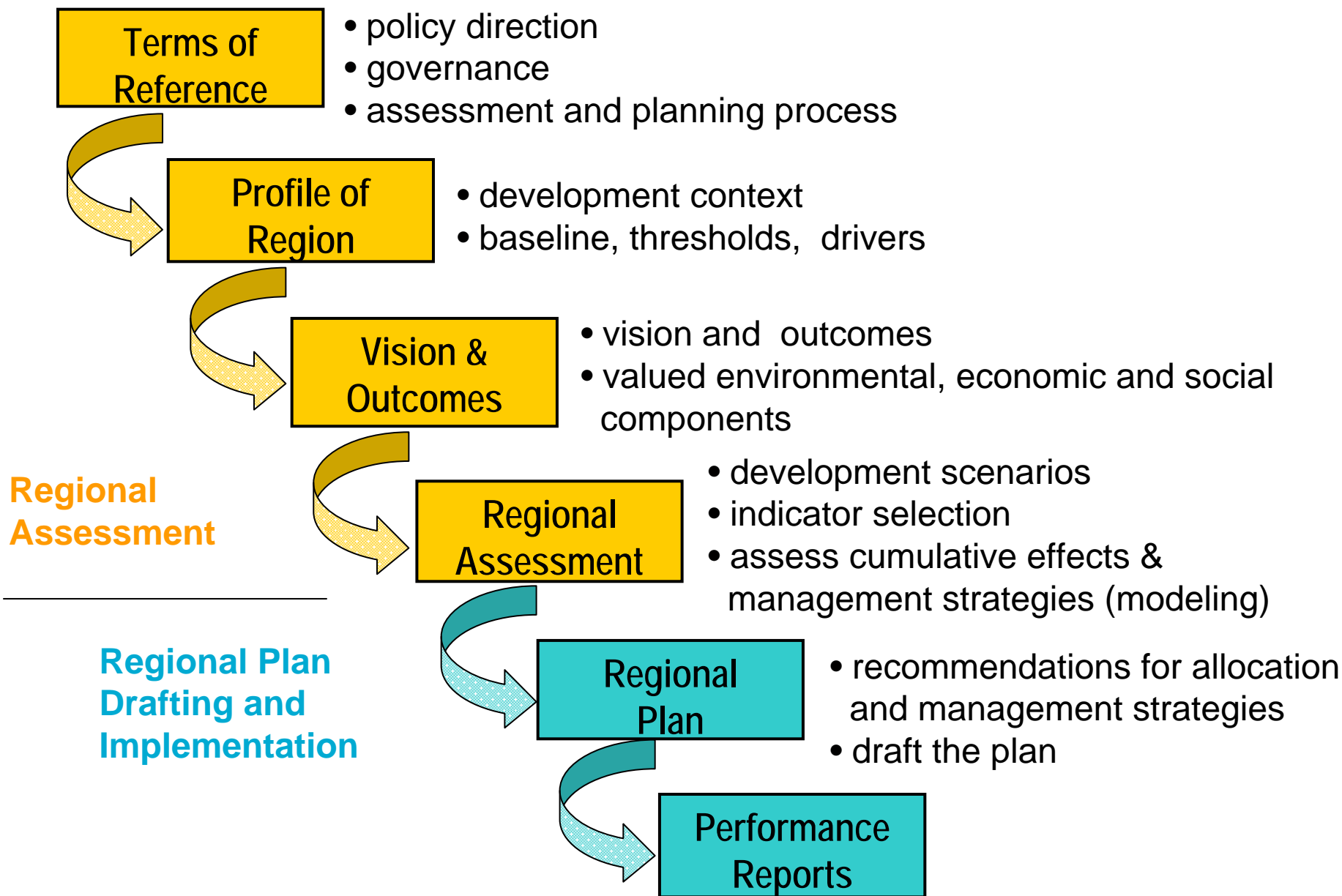
---

- Anticipates and plans for major activities, opportunities and challenges unique to regional priorities, issues, resources
- Considers advice from Regional Advisory Council and public, stakeholder, aboriginal consultation
- Developed by government:
  - Cabinet direction, decision and approval
  - Cabinet provides guidance regarding
    - balance between development and the environment
    - assessment and allocation of resources
    - policy alignment
- Alberta Land Stewardship Act provides authority
- Subject to regular reviews

# Regional Planning Governance




# Regional Planning Process



# Regional Plan General Format



# Lower Athabasca Regional Plan

- Regional Advisory Council established – December 2008
- Public Consultation (Phase 1) – May and June 2009
- Profile of the Region & Terms of Reference – July 2009 
  - Bitumen extraction scenarios
  - Boreal forest conservation
  - Air, surface water and groundwater management:
  - Recreation and tourism opportunities
- Regional Advisory Council recommendations - March 2010
- Draft Vision Document consultation (Phase 2)
- Draft Plan consultation (Phase 3)
- Final Plan

# South Saskatchewan Regional Plan

- Regional Advisory Council established – May 2009
- Profile of the Region & Terms of Reference – November 2009



**Two key drivers of change:**

- water supply and demand
- population growth

**Key economic sectors:**

- Agriculture, Energy, Forestry, Tourism and Recreation

- Public Consultation (Phase 1) – November and December 2009
- Regional Advisory Council completion of recommendations
- Draft Vision Document consultation (Phase 2)
- Draft Plan consultation (Phase 3)
- Final Plan

# Water Management

---

## Lower Athabasca Region:

- Water Management Framework: IFN Water Management System for the L. Athabasca River
- Cold Lake-Beaver River Water Management Plan
- surface water quality management framework for L. Athabasca River
- groundwater management frameworks for Athabasca, South Athabasca and Cold Lake areas

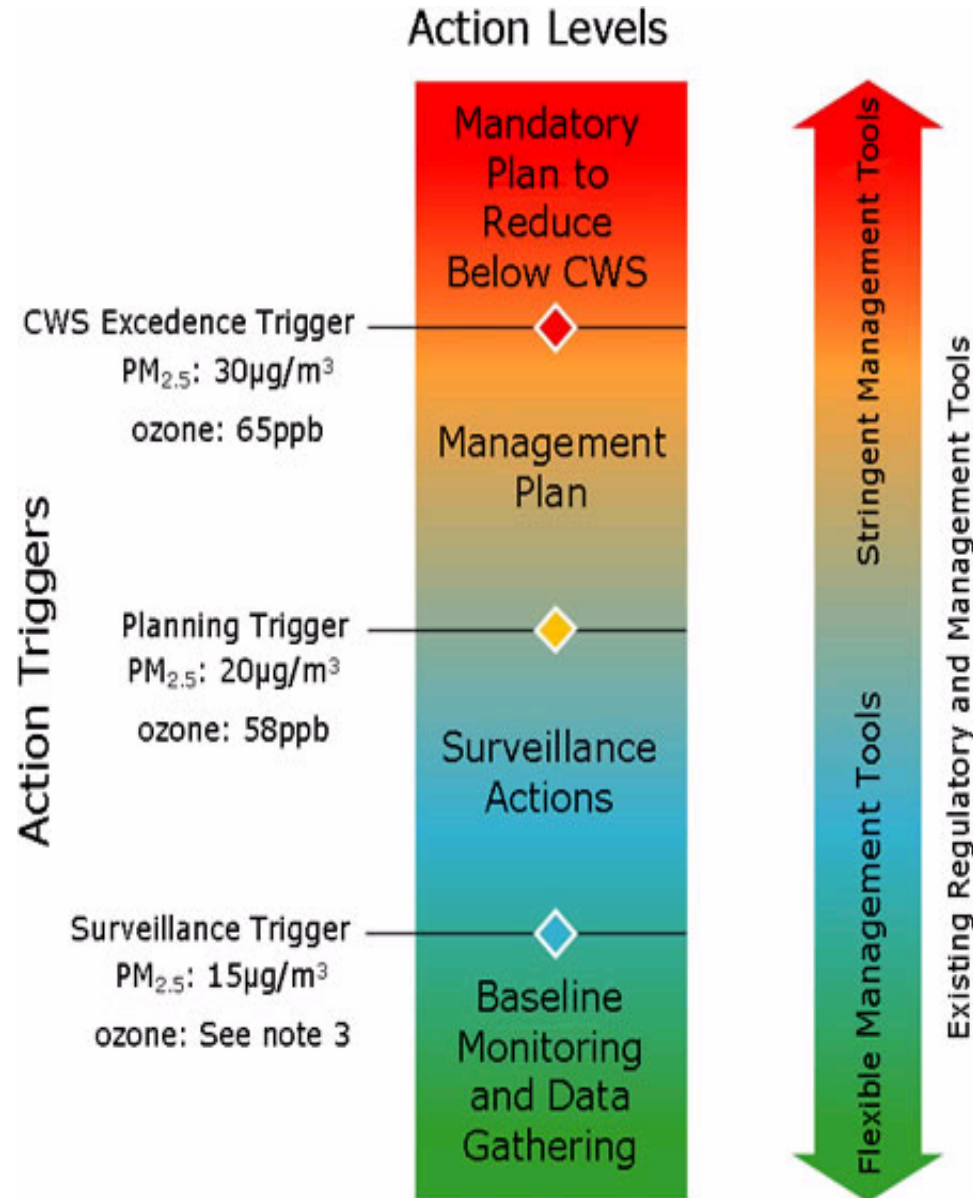
## South Saskatchewan Region:

- transboundary agreements
- Bow, Oldman and South Saskatchewan River Basins Allocation Orders
- Water Conservation Objectives: Bow, Oldman, South Saskatchewan and Red Deer Sub-basins
- Water Management Plans for the South Saskatchewan Basin and Upper Highwood and Upper Little Bow Rivers
- surface water quality management framework for mainstems
- groundwater mapping



# Management Frameworks

- Collaborative approach to establish desired outcomes and objectives
- Progressive action based on conditions found in the environment; trigger points
- Identified integrated management actions at trigger points
- Full range of information, incentive, and regulatory tools for implementation
- Intensity of management actions increases to respond to the state of conditions and levels of risk



# Cumulative Effects Management

---

- Regional plans will guide future development decisions.
- Cumulative effects management will be used to manage impacts of development to air, land, water and biodiversity.
- Environmental assessment will shift to a regional focus from a project-specific focus.

## Cumulative effects management approach is:

- Outcomes based
- Place based
- Performance management based
- Collaborative
- Comprehensive implementation

# Shifting to a Cumulative Effects Management System Approach

## YESTERDAY:

- Project-by-project regulation / allocation according to incremental effect;
- Focus on preventing adverse effects;
- Cumulative effects assessment of major projects an add-on;
- Cumulative effects of smaller projects and non-regulated activity largely unaddressed.

## TODAY!

## TOMORROW:

- Regulation / allocation in context of overall capacity;
- Focus on achieving desired outcomes;
- Considers all contributors to achieving desired outcome;
- Management action in response to where we are relative to desired outcomes.



Freedom To Create. Spirit To Achieve.

# Questions and Comments